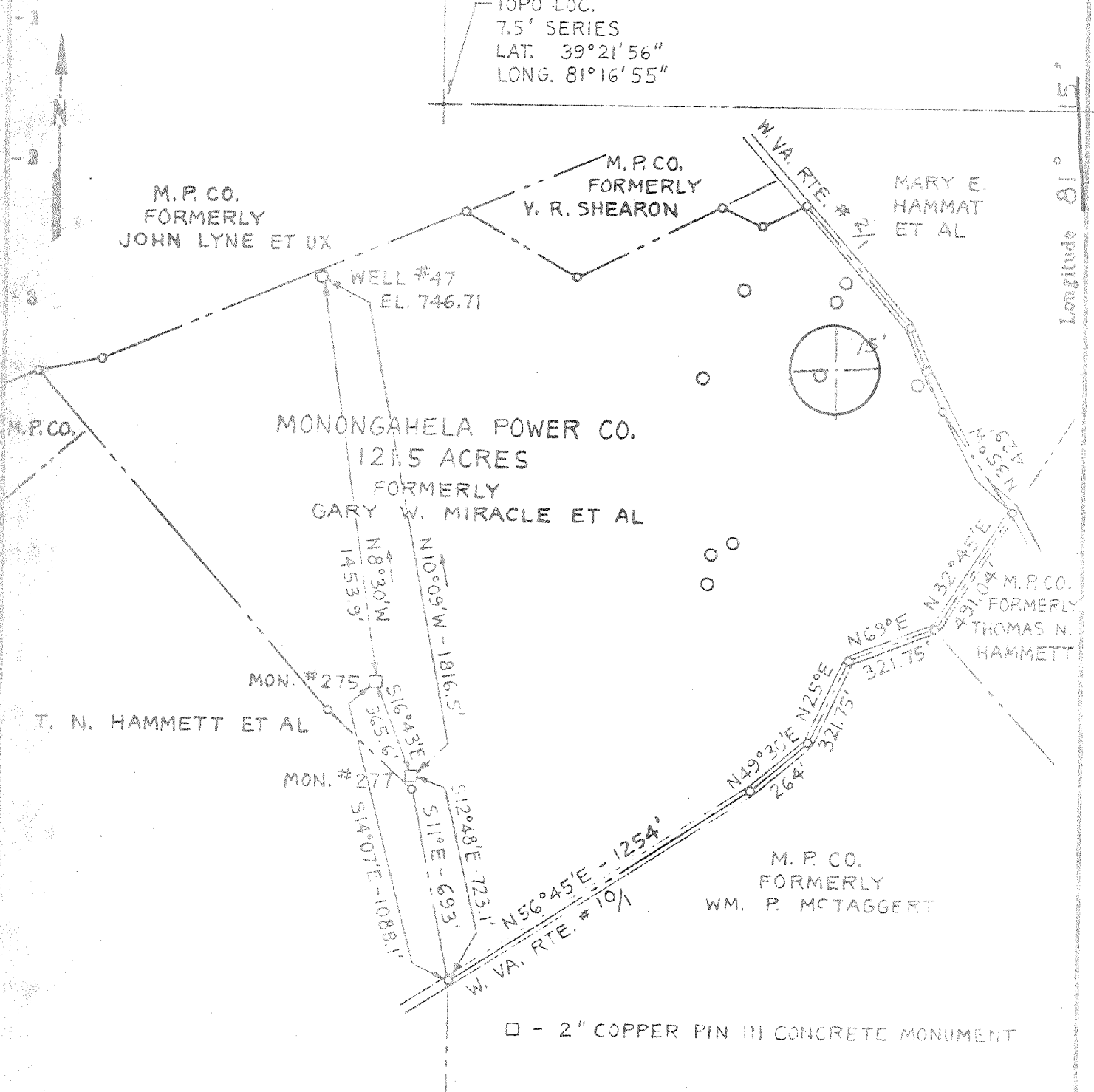


Latitude 39° 22' 30"
(15') 39° 25'
Longitude 81° 15'

TOPO LOC.
7.5' SERIES
LAT. 39°21'56"
LONG. 81°16'55"



□ - 2" COPPER PIN IN CONCRETE MONUMENT

- Fracture....
- Redrill.....
- New Location
- Drill Deeper
- Abandonment 12/8/77

Source of Elevation U.S.G.S. B.M. #B132 1957; EL. 634.41

I, the undersigned, hereby certify that this map is correct to the best of my knowledge and belief and shows all the information required by paragraph 8 of the rules and regulations of the oil and gas section of the mining laws of West Virginia.

Minimum accuracy, one part in 500'

Company MONONGAHELA POWER COMPANY
 Address 1310 Fairmont Ave., Fairmont, W. Va.
 Farm M.P. CO. (formerly Gary W. Miracle Et Al)
 Tract Acres 121.5 Lease No.
 Well (Farm) No. 47 Serial No.
 Elevation (Spirit Level) 746.71 EC
 Quadrangle Willow Island, W. Va. - Ohio Marietta 15'
 County Pleasants District Grant
 Surveyor or Engineer
 Surveyor's or Engineer's Registration No. W. Va. L.L.S. #32
 File No. Drawing No.
 Date Scale 1"=500'

STATE OF WEST VIRGINIA
DEPARTMENT OF MINES
OIL AND GAS DIVISION
CHARLESTON

WELL LOCATION MAP
FILE NO. PLEAS-1123-A

+ Denotes location of well on United States Topographic Maps, scale 1 to 25,000 latitude and longitude lines being represented by border lines as shown.

— Denotes one inch spaces on border lines of original tracing.

47-073

DEC 23 1977