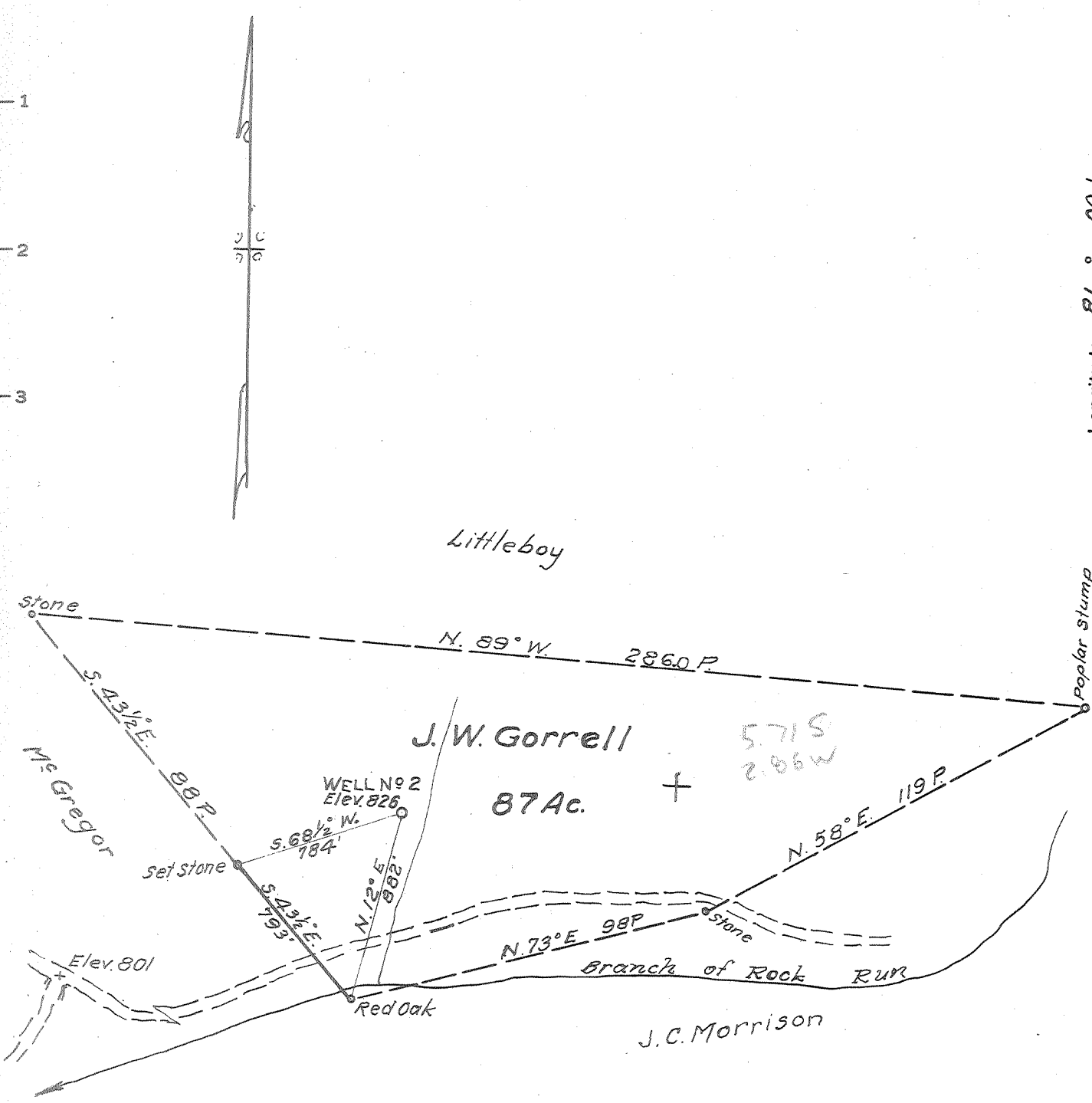


Latitude 39 ° 25'

Longitude 81 ° 00'



MINIMUM ERROR OF CLOSURE 1/500

SOURCE OF ELEVATION Junction of roads 0.6 mile west of well.

Elev. 801

New Location

Drill Deeper

Abandonment

"I, THE UNDERSIGNED, HEREBY CERTIFY THAT THIS MAP IS CORRECT TO THE BEST OF MY KNOWLEDGE AND BELIEF AND SHOWS ALL THE INFORMATION REQUIRED BY PARAGRAPH 6 OF THE RULES AND REGULATIONS OF THE OIL AND GAS SECTION OF THE MINING LAWS OF WEST VIRGINIA."

Company Hanlon Oil Co.

Address 727 1/2 Wells St., Sistersville, W.Va.

Farm J. W. Gorrell

Tract 1 Acres 87 Lease No. _____

Well (Farm) No. 2 Serial No. _____

Elevation (Spirit Level) 826

Quadrangle St. Marys, W.Va. - Ohio

County Pleasants District Lafayette

Engineer Parker E. Peters

Engineer's Registration No. 485

File No. _____ Drawing No. _____

Date June 15, 1965 Scale 1" = 40 P.

STATE OF WEST VIRGINIA
DEPARTMENT OF MINES
OIL AND GAS DIVISION
CHARLESTON

WELL LOCATION MAP
FILE NO. Pleas-1070-A

+ Denotes location of well on United States Topographic Maps, scale 1 to 62,500, latitude and longitude lines being represented by border lines as shown.

- Denotes one inch spaces on border line of original tracing.