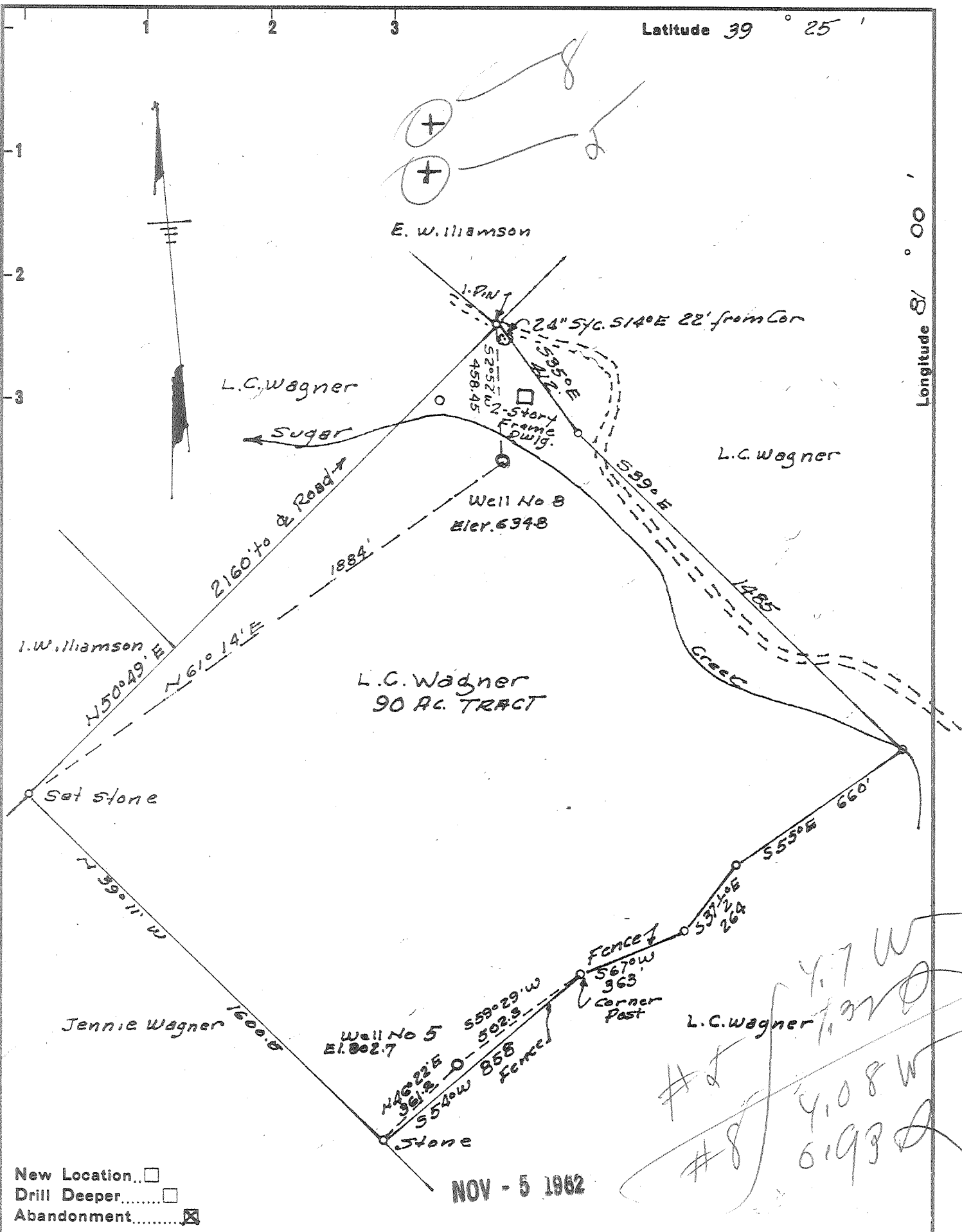


Latitude 39° 25'

Longitude 81° 00'



- New Location...
- Drill Deeper...
- Abandonment...

NOV - 5 1962

Company LEONARD HART  
 Address 702-2nd St. St. Marys W. Va  
 Farm L.G. Wagner  
 Tract \_\_\_\_\_ Acres 90 Lease No. \_\_\_\_\_  
 Well (Farm) No. 5 & 8 Serial No. \_\_\_\_\_  
 Elevation (Spirit Level) #8 634.8 #5 802.7  
 Quadrangle St. Marys  
 County Pleasants District Lafayette  
 Engineer H. F. Johnston  
 Engineer's Registration No. 2492  
 File No. \_\_\_\_\_ Drawing No. \_\_\_\_\_  
 Date Oct 5, 1962 Scale 1"=400'

STATE OF WEST VIRGINIA  
 DEPARTMENT OF MINES  
 OIL AND GAS DIVISION  
 CHARLESTON

WELL LOCATION MAP

FILE NO. PLEAS-1038-A-#5  
PLEAS-1041-A-#8

+ Denotes location of well on United States Topographic Maps, scale 1 to 62,500, latitude and longitude lines being represented by border lines as shown.

- Denotes one inch spaces on border line of original tracing.

L.C. WAGNER MS 5 & 8 - LEONARD HART

PLEAS-1038-A  
-1041-A