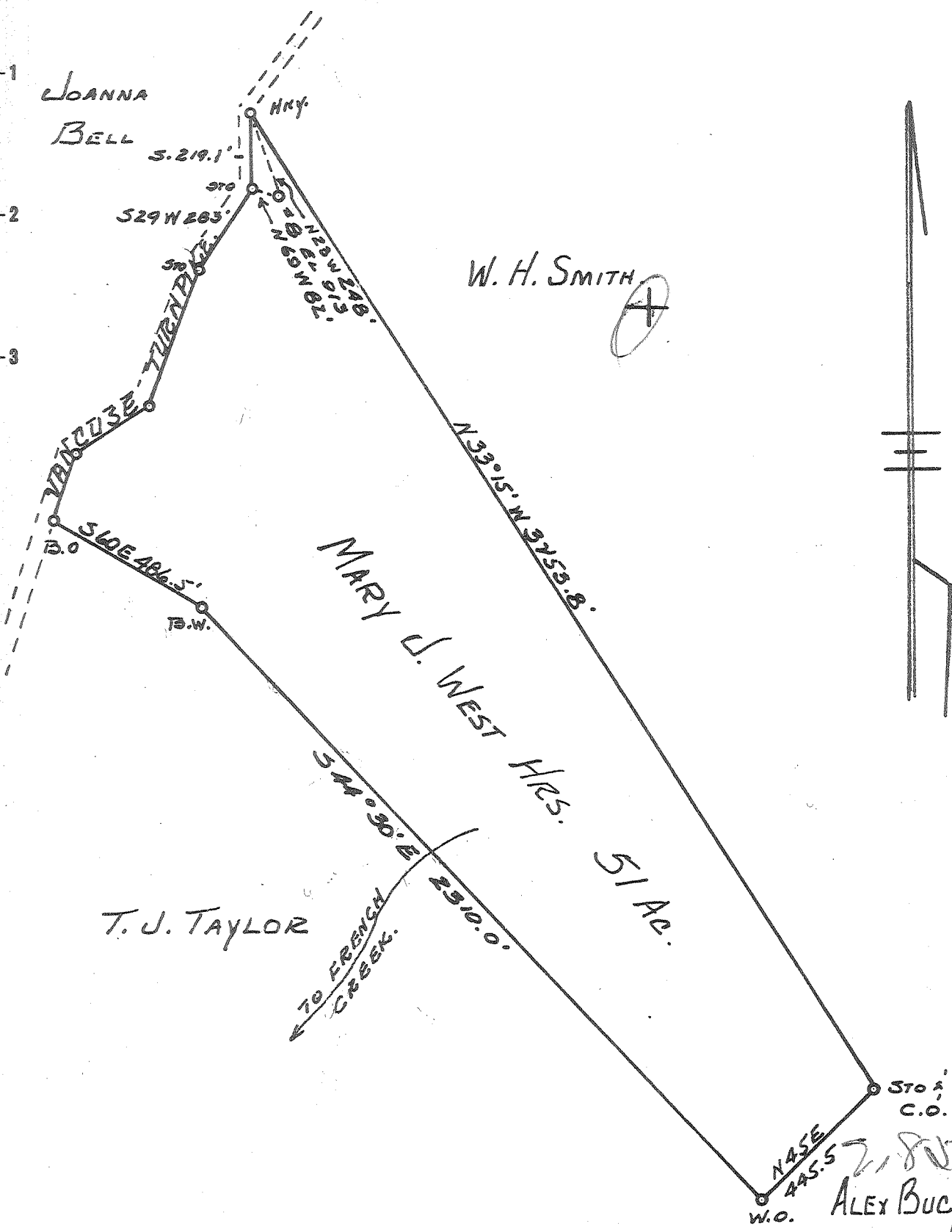


Latitude 39° 25'

Longitude 81° 10'



W. H. SMITH

MARY J. WEST HRS. 51 AC.

T. J. TAYLOR

ALEX BUCY  
2,800 W  
2,800 W

New Location   
Drill Deeper   
Abandonment

SEP - 4 1962

Company LEONARD HART  
 Address ST. MARYS. W. VA.  
 Farm MARY J. WEST HRS.  
 Tract \_\_\_\_\_ Acres 51 Lease No. 5  
 Well (Farm) No. 8 Serial No. \_\_\_\_\_  
 Elevation (Spirit Level) 913.0'  
 Quadrangle ST. MARYS.  
 County PLEASANTS District WASHINGTON  
 Engineer JOHN W. HAMILTON  
 Engineer's Registration No. 2274  
 File No. \_\_\_\_\_ Drawing No. 244  
 Date SEP 10, 1960 Scale 1" = 400'

STATE OF WEST VIRGINIA  
DEPARTMENT OF MINES  
OIL AND GAS DIVISION  
CHARLESTON

WELL LOCATION MAP  
FILE NO. PLEAS-1006-A

+ Denotes location of well on United States Topographic Maps, scale 1 to 62,500, latitude and longitude lines being represented by border lines as shown.

- Denotes one inch spaces on border line of original tracing.