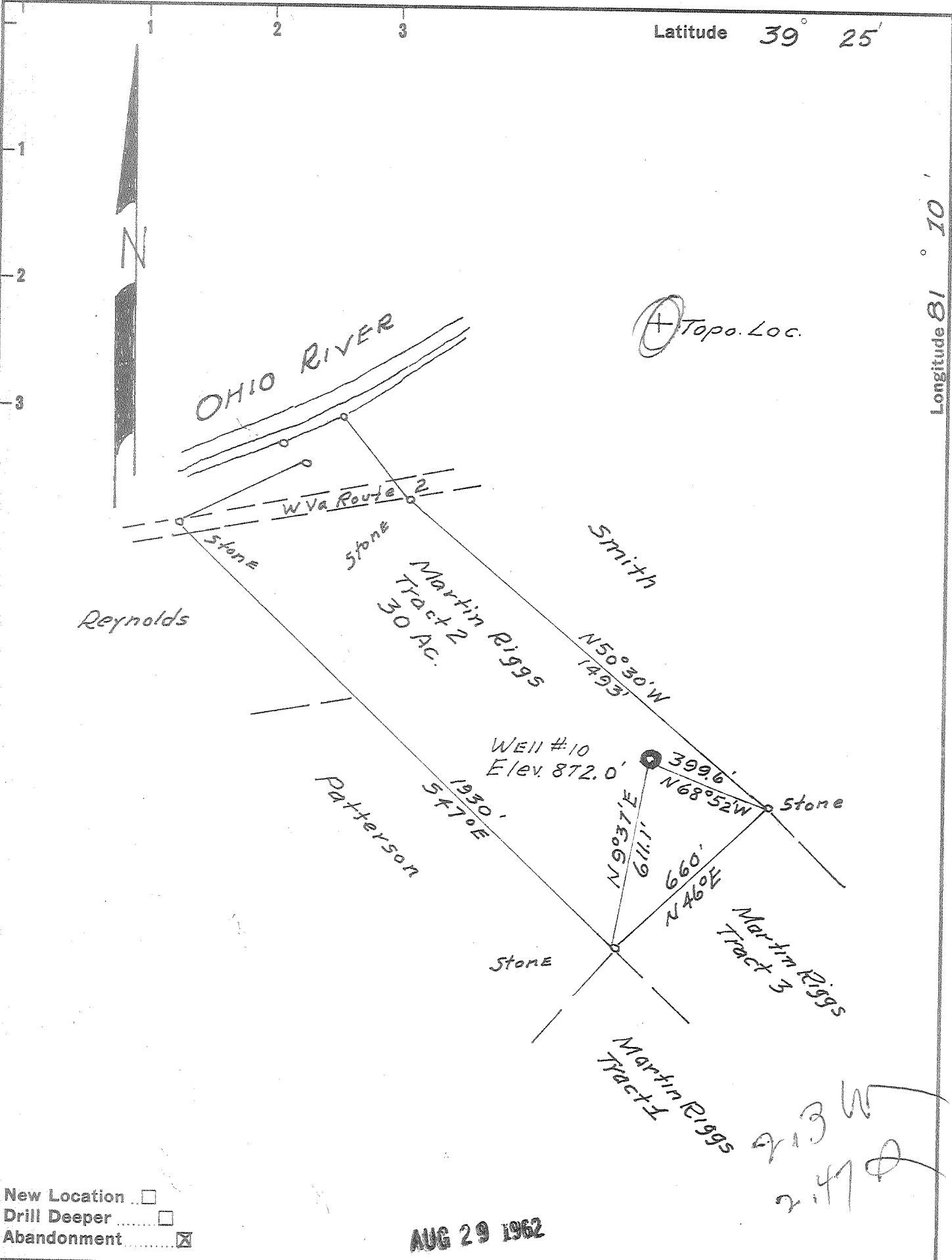


Latitude 39° 25'

Longitude 81° 10'



New Location   
 Drill Deeper   
 Abandonment

AUG 29 1962

213 W  
 247 D

Company Leonard Hart  
 Address 702 2<sup>nd</sup> St. St. Marys, W Va.  
 Farm Martin Riggs  
 Tract 2 Acres 30 Lease No. \_\_\_\_\_  
 Well (Farm) No. 10 Serial No. \_\_\_\_\_  
 Elevation (Spirit Level) 872.0  
 Quadrangle St Marys  
 County Pleasants District Washington  
 Engineer Harry F Schultze  
 Engineer's Registration No. 3779  
 File No. \_\_\_\_\_ Drawing No. \_\_\_\_\_  
 Date July 23, 1962 Scale 1" = 400'

STATE OF WEST VIRGINIA  
 DEPARTMENT OF MINES  
 OIL AND GAS DIVISION  
 CHARLESTON

WELL LOCATION MAP  
 FILE NO. PLEAS-1001-A

+ Denotes location of well on United States Topographic Maps, scale 1 to 62,500, latitude and longitude lines being represented by border lines as shown.  
 - Denotes one inch spaces on border line of original tracing.

MARTIN RIGGS No. 10 - LEONARD HART - PLEAS-1001-A