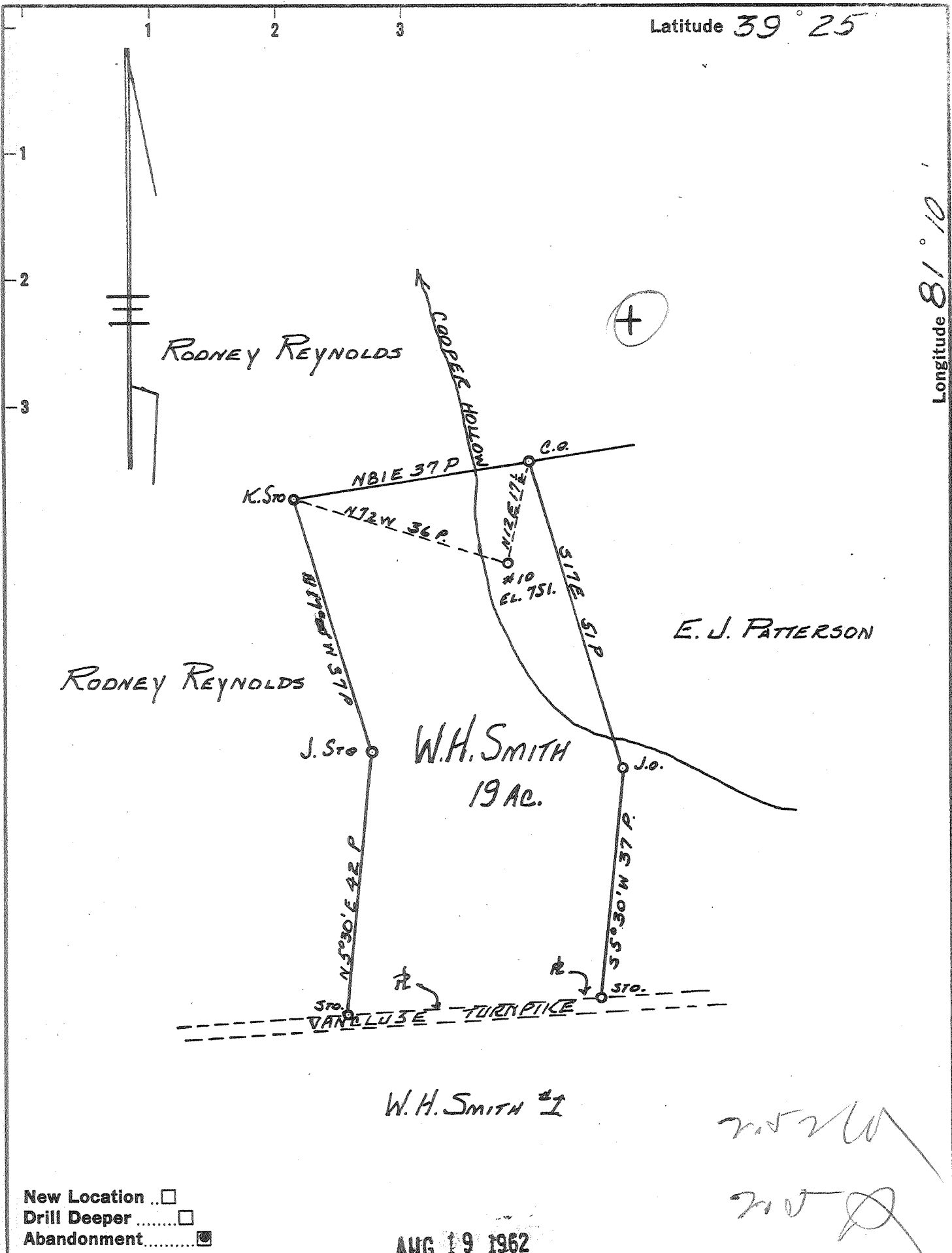


Latitude 39° 25'

Longitude 81° 10'



New Location ..
 Drill Deeper
 Abandonment.....

AUG 19 1962

Handwritten signatures and initials, including 'W.H. Smith' and 'J.H.' with a large flourish.

Company	HART & HAMILTON
Address	ST. MARYS. W. VA.
Farm	W. H. SMITH.
Tract	2
Acres	19
Lease No.	1
Well (Farm) No.	10
Serial No.	
Elevation (Spirit Level)	751.0'
Quadrangle	ST. MARYS
County	PLEASANTS
District	WASHINGTON
Engineer	JOHN W. HAMILTON
Engineer's Registration No.	2274
File No.	
Drawing No.	259
Date	SEPT 20, 1960
Scale	1" = 20 POLES.

STATE OF WEST VIRGINIA
 DEPARTMENT OF MINES
 OIL AND GAS DIVISION
 CHARLESTON

WELL LOCATION MAP
 FILE NO. PLEAS-993-A

+ Denotes location of well on United States Topographic Maps, scale 1 to 62,500, latitude and longitude lines being represented by border lines as shown.

- Denotes one inch spaces on border line of original tracing.