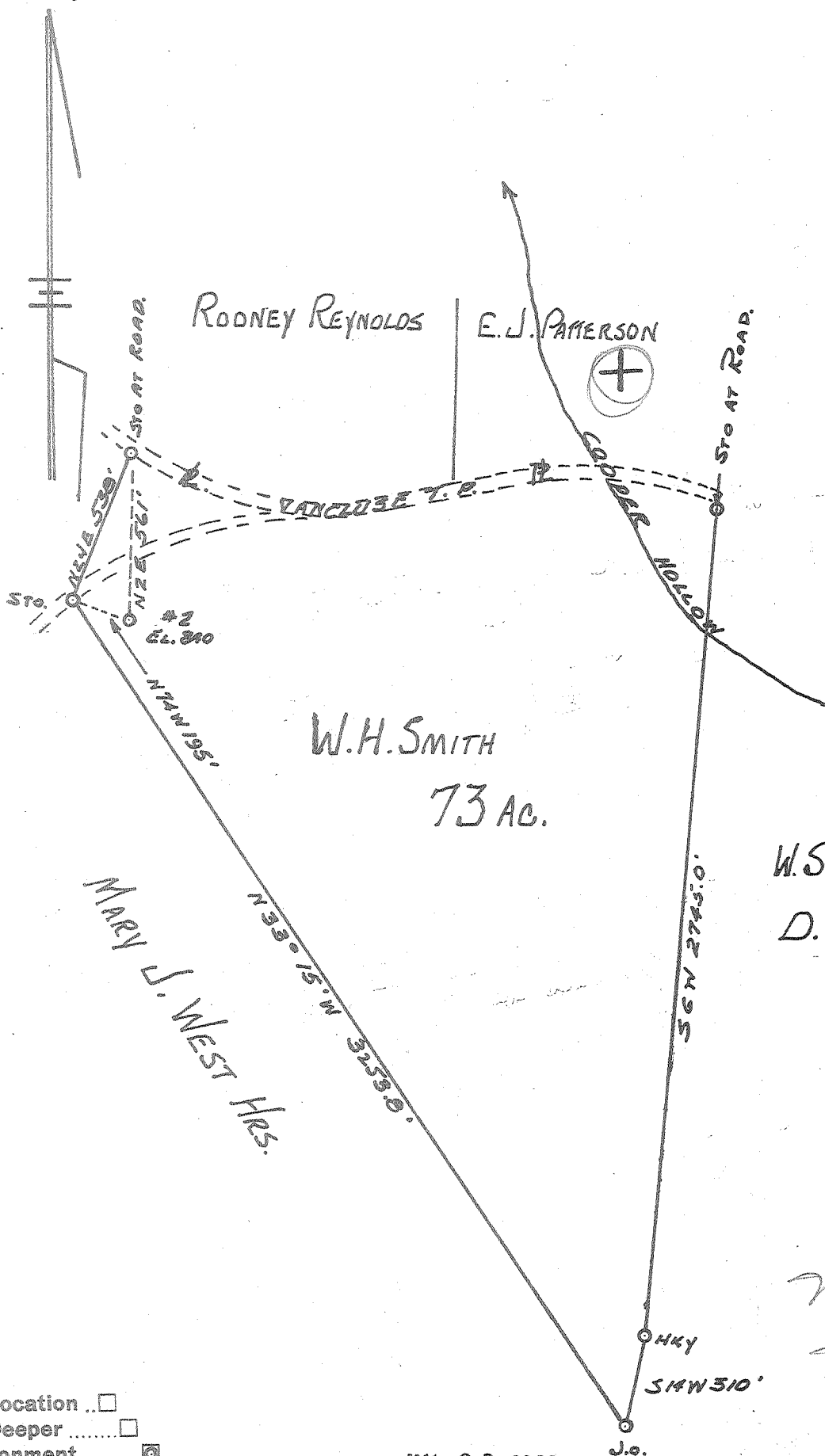


Latitude $39^{\circ} 25'$

Longitude $81^{\circ} 10' 1''$



New Location
 Drill Deeper
 Abandonment

JUL 22 1962

Company LEONARD HART
 Address ST MARYS, W.VA.
 Farm W.H. SMITH
 Tract 1 Acres 73 Lease No. 2
 Well (Farm) No. 2 Serial No. _____
 Elevation (Spirit Level) 840
 Quadrangle St. Marys
 County PLEASANTS District WASHINGTON
 Engineer LEONARD HART
 Engineer's Registration No. 2274
 File No. _____ Drawing No. 248
 Date SEPT 20, 1960 Scale 1" = 500'

STATE OF WEST VIRGINIA
 DEPARTMENT OF MINES
 OIL AND GAS DIVISION
 CHARLESTON

WELL LOCATION MAP
 FILE NO. PLEAS-971-A

+ Denotes location of well on United States Topographic Maps, scale 1 to 62,500, latitude and longitude lines being represented by border lines as shown.

- Denotes one inch spaces on border line of original tracing.