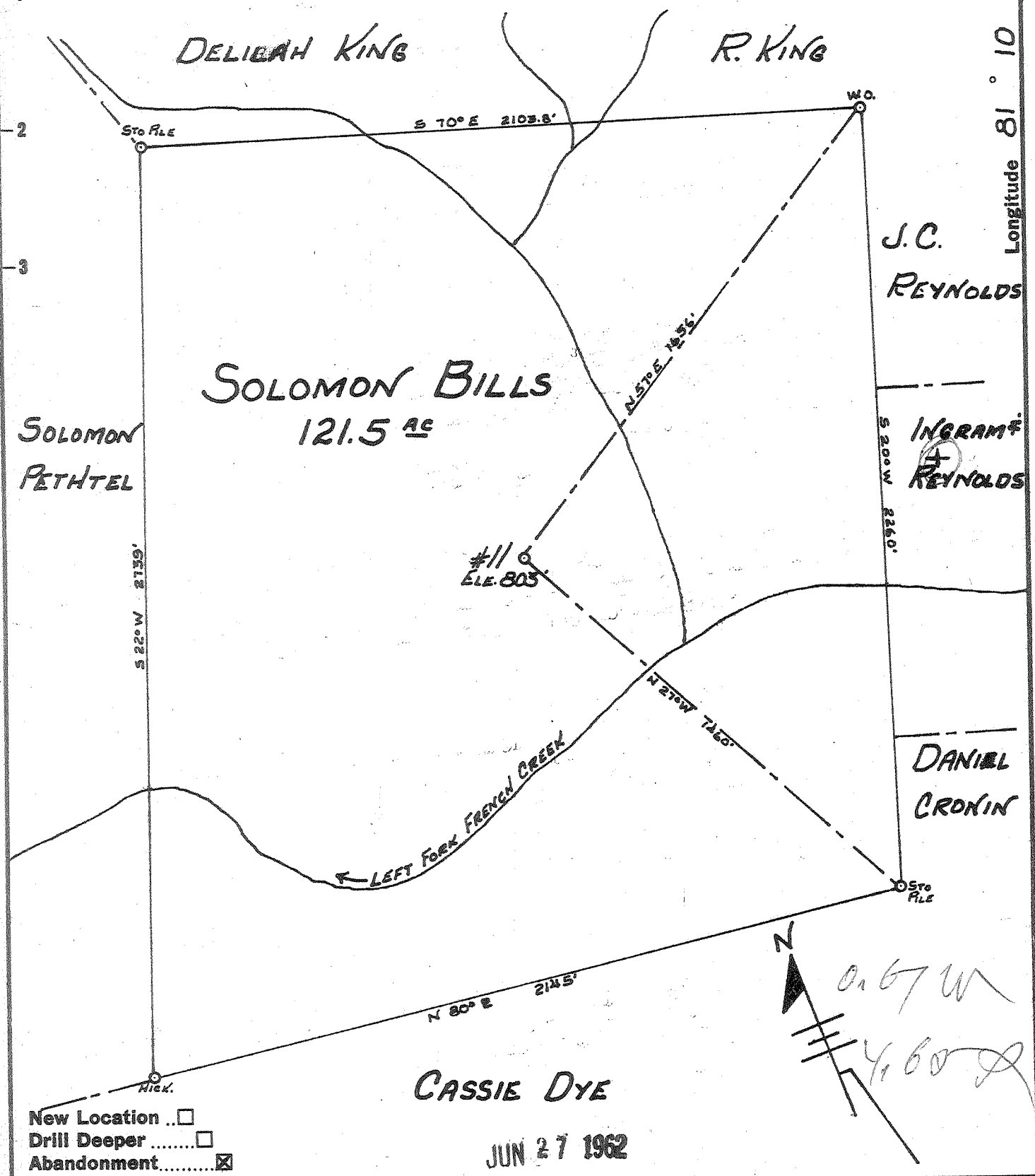


Latitude 39° 25'

Longitude 81° 10'



New Location   
 Drill Deeper   
 Abandonment

JUN 27 1962

Company LEONARD HART  
 Address 702 2ND ST. ST. MARYS, W. VA.  
 Farm SOLOMON BILLS  
 Tract \_\_\_\_\_ Acres 121.5 Lease No. \_\_\_\_\_  
 Well (Farm) No. 11 Serial No. \_\_\_\_\_  
 Elevation (Spirit Level) 803'  
 Quadrangle ST. MARYS  
 County PLEASANTS District McKIM  
 Engineer John W. Hamilton  
 Engineer's Registration No. 2274  
 File No. \_\_\_\_\_ Drawing No. \_\_\_\_\_  
 Date 9-15-61 Scale 1" = 400'

STATE OF WEST VIRGINIA  
 DEPARTMENT OF MINES  
 OIL AND GAS DIVISION  
 CHARLESTON

WELL LOCATION MAP  
 FILE NO. PLEAS-962-A

+ Denotes location of well on United States Topographic Maps, scale 1 to 62,500, latitude and longitude lines being represented by border lines as shown.  
 - Denotes one inch spaces on border line of original tracing.