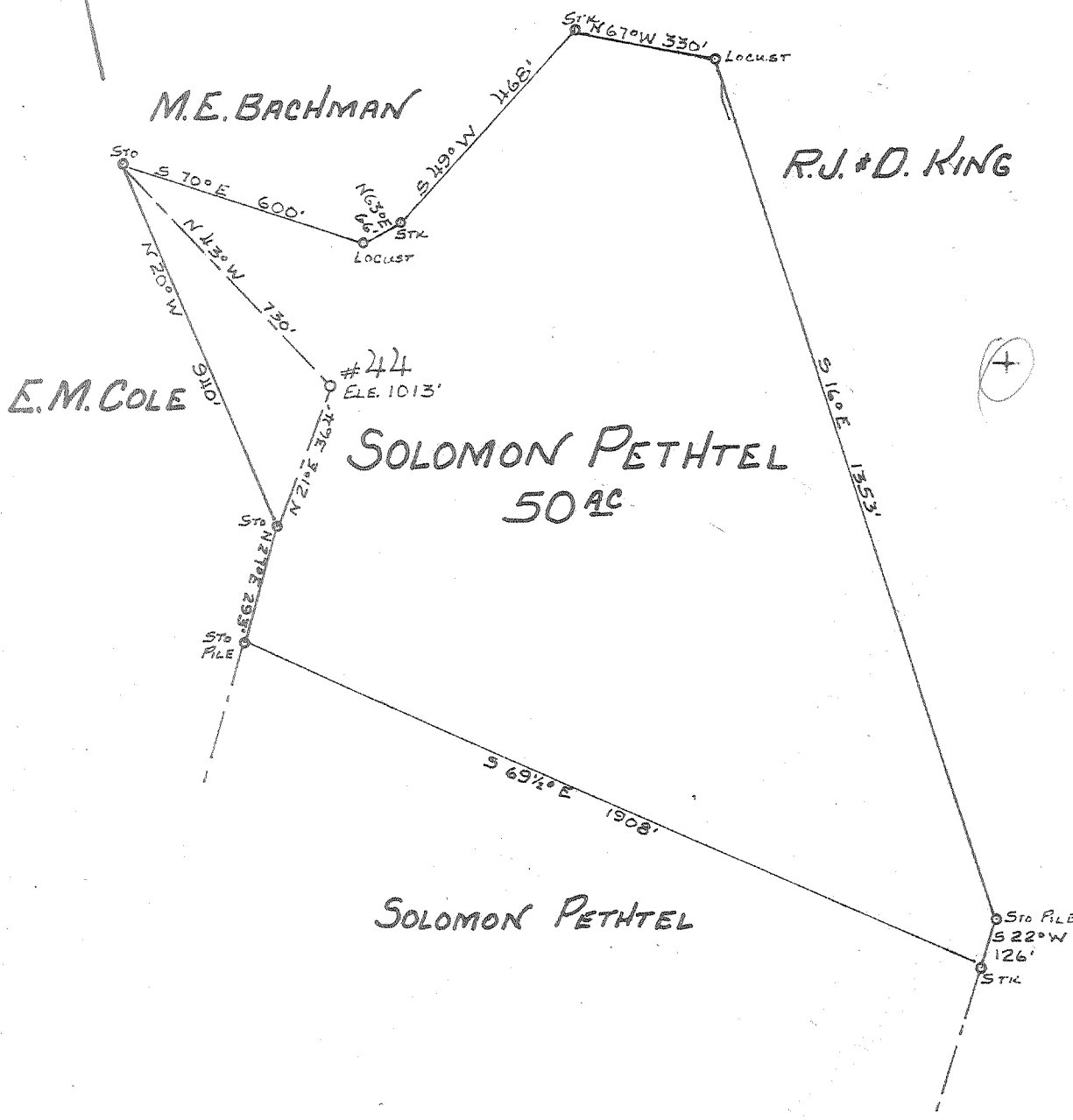
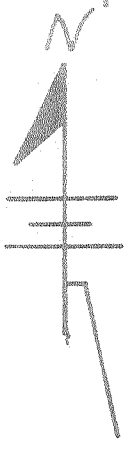


Latitude 39° 25'

Longitude 81° 10'



New Location   
 Drill Deeper   
 Abandonment

OCT 16 1961

0.97 W  
 4.15 D

Company LEONARD HART  
 Address 702 2ND ST. ST. MARYS, W. VA.  
 Farm SOLOMON PETHTEL  
 Tract \_\_\_\_\_ Acres 50 Lease No. \_\_\_\_\_  
 Well (Farm) No. 44 Serial No. \_\_\_\_\_  
 Elevation (Spirit Level) 1013'  
 Quadrangle ST. MARYS  
 County PLEASANTS District McKIM  
 Engineer John W. Hamilton  
 Engineer's Registration No. 2274  
 File No. \_\_\_\_\_ Drawing No. \_\_\_\_\_  
 Date 9-15-61 Scale 1" = 400'

STATE OF WEST VIRGINIA  
 DEPARTMENT OF MINES  
 OIL AND GAS DIVISION  
 CHARLESTON

WELL LOCATION MAP  
 FILE NO. PLEAS-940-A

+ Denotes location of well on United States Topographic Maps, scale 1 to 62,500, latitude and longitude lines being represented by border lines as shown.

- Denotes one inch spaces on border line of original tracing.

SOLEMON PETHTEL No. AA - LEONARD HART - PLEAS-940-A