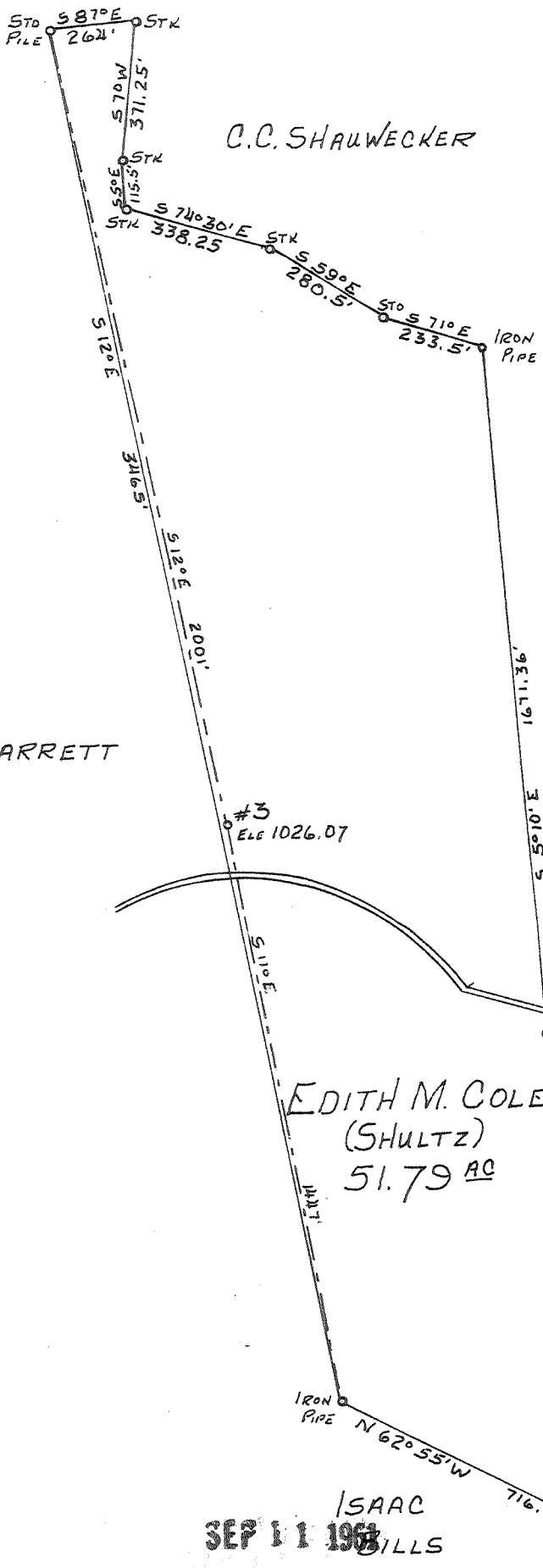


Latitude 39° 25'

Longitude 81° 10'



New Location ..   
 Drill Deeper .....   
 Abandonment .....

SEP 11 1961

Company LEONARD HART  
 Address 702 SECOND ST ST. MARYS WVA  
 Farm Edith M. Cole  
 Tract \_\_\_\_\_ Acres 51.79 Lease No. \_\_\_\_\_  
 Well (Farm) No. 3 Serial No. \_\_\_\_\_  
 Elevation (Spirit Level) 1076.07  
 Quadrangle ST. MARYS  
 County PLEASANTS District Washington  
 Engineer John M. Hamilton  
 Engineer's Registration No. 2274  
 File No. \_\_\_\_\_ Drawing No. \_\_\_\_\_  
 Date AUG 24, 1961 Scale 1" = 400'

STATE OF WEST VIRGINIA  
 DEPARTMENT OF MINES  
 OIL AND GAS DIVISION  
 CHARLESTON

WELL LOCATION MAP  
 FILE NO. Pleas-921-A

+ Denotes location of well on United States Topographic Maps, scale 1 to 62,500, latitude and longitude lines being represented by border lines as shown.

- Denotes one inch spaces on border line of original tracing.

EDITH M. COLE #3 - LEONARD HART - PLEAS-921A



34 sides

257

STATE OF WEST VIRGINIA  
DEPARTMENT OF MINES  
OIL AND GAS DIVISION

Quadrangle St. Marys

Permit No. 921A

WELL RECORD

Oil or Gas Well Oil  
(KIND)

Company Leonard Hart  
 Address 712 Second Street, St. Marys, W. Va.  
 Farm Edith M. Cole Acres 21.79  
 Location (waters) French Creek  
 Well No. 3 Elev. 1026.07'  
 District Washington County Fleming  
 The surface of tract is owned in fee by Jesse H. Shultz  
 Address St. Marys, W. Va.  
 Mineral rights are owned by Edith M. Cole Heire  
 Address \_\_\_\_\_  
 Drilling commenced \_\_\_\_\_  
 Drilling completed 1899  
 Date Shot \_\_\_\_\_ From \_\_\_\_\_ To \_\_\_\_\_  
 With \_\_\_\_\_  
 Open Flow /10ths Water in \_\_\_\_\_ Inch  
 /10ths Merc. in \_\_\_\_\_ Inch  
 Volume \_\_\_\_\_ Cu. Ft.  
 Rock Pressure \_\_\_\_\_ lbs. \_\_\_\_\_ hrs.  
 Oil \_\_\_\_\_ bbls., 1st 24 hrs.  
 WELL ACIDIZED No  
 WELL FRACTURED No

Casing and Tubing	Used in Drilling	Left in Well	Packers
Size			Kind of Packer
16			
13			
10			Size of
8 1/4			
6 3/8	<u>6 1/2"</u>	<u>651</u>	Depth set
5 3/16			
3			Perf. top
2			Perf. bottom
Liners Used			Perf. top
			Perf. bottom

CASING CEMENTED \_\_\_\_\_ SIZE \_\_\_\_\_ No. Ft. \_\_\_\_\_ Date \_\_\_\_\_  
 COAL WAS ENCOUNTERED AT \_\_\_\_\_ FEET \_\_\_\_\_ INCHES  
 \_\_\_\_\_ FEET \_\_\_\_\_ INCHES FEET \_\_\_\_\_ INCHES  
 \_\_\_\_\_ FEET \_\_\_\_\_ INCHES FEET \_\_\_\_\_ INCHES

RESULT AFTER TREATMENT

ROCK PRESSURE AFTER TREATMENT

Fresh Water \_\_\_\_\_ Feet Salt Water \_\_\_\_\_ Feet

Formation	Color	Hard or Soft	Top	Bottom	Oil, Gas or Water	Depth	Remarks
<u>Cow Run</u>			<u>863</u>	<u>891</u>			
<u>Total Depth</u>				<u>933</u>			



Formation	Color	Hard or Soft	Top	Bottom	Oil, Gas or Water	Depth Found	Remarks

Date August 26, 1963, 19\_\_\_

APPROVED LEONARD BAST, Owner

By Leonard Bast  
(Title)