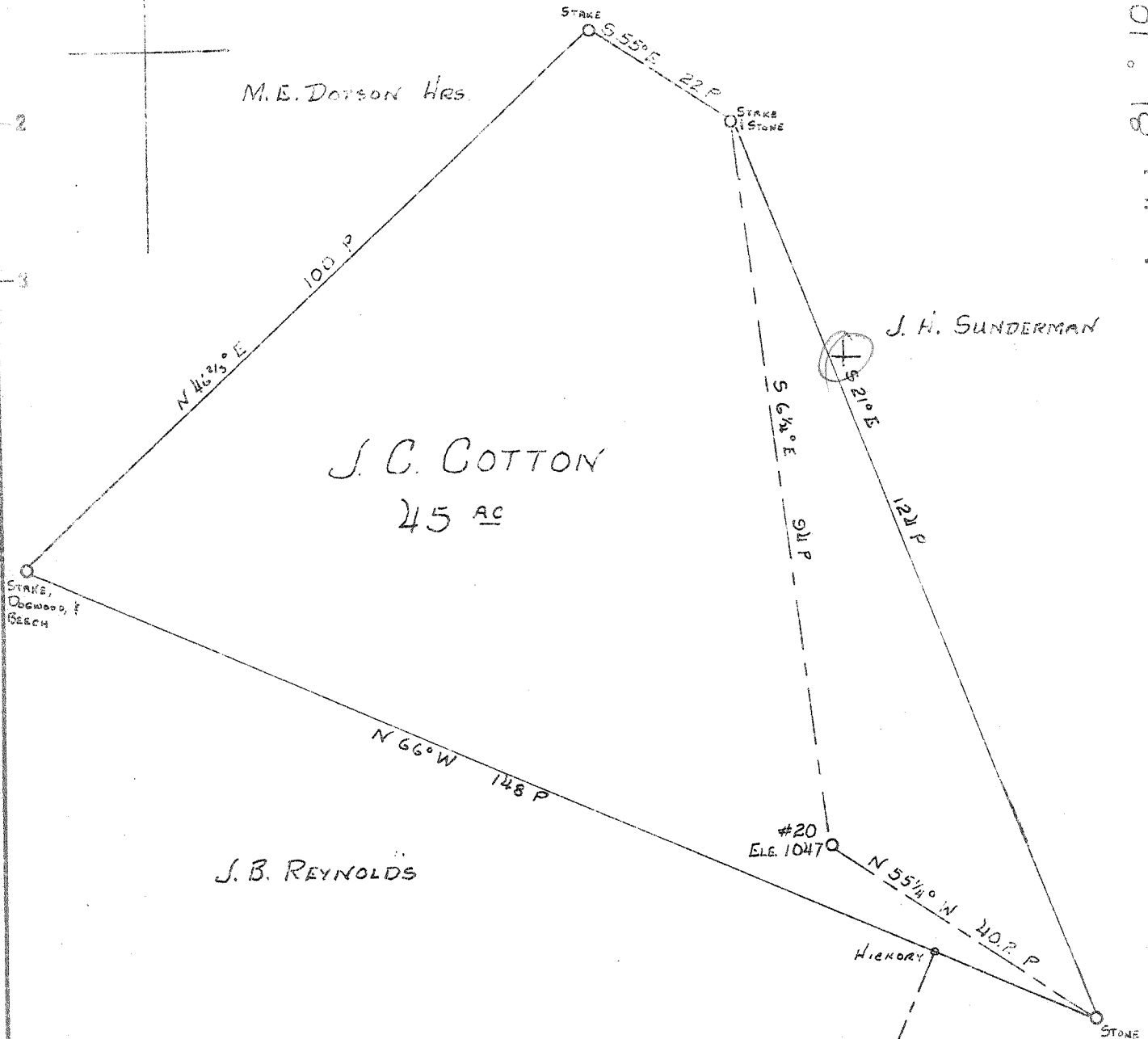


Latitude 39° 25'

Longitude 81° 10'



STAKE, Dogwood, Beech

#20  
E.L.E. 1047

Highway

F.K. BILLS

2.1 W

307 V D

JUL 16 1961

New Location   
 Drill Deeper   
 Abandonment

Company	LEONARD HART
Address	702 2 <sup>ND</sup> ST. ST. MARYS, W.VA.
Farm	J. C. COTTON 45-A
Tract	1 Acres 45 Lease No. 12
Well (Farm) No.	20 Serial No. 3
Elevation (Spirit Level)	1047
Quadrangle	ST. MARYS
County	PLEASANTS District WASHINGTON
Engineer	John W. Hamilton
Engineer's Registration No.	2274
File No.	Drawing No.
Date	MAY 1, 1961 Scale 1" = 20 P

STATE OF WEST VIRGINIA  
 DEPARTMENT OF MINES  
 OIL AND GAS DIVISION  
 CHARLESTON

WELL LOCATION MAP  
 FILE NO. PLEAS-897-A

+ Denotes location of well on United States Topographic Maps, scale 1 to 32,500, latitude and longitude lines being represented by border lines as shown.

- Denotes one inch spaces on border line of original tracing.

J. C. COTTON No. 20(3) - LEONARD HART - PLEAS-897-A



273

STATE OF WEST VIRGINIA  
DEPARTMENT OF MINES  
OIL AND GAS DIVISION

Quadrangle St. Marys  
Permit No. 599A

WELL RECORD

Oil or Gas Well Oil  
(KIND)

Company Leonard Hart  
 Address 702 Second Street, St. Marys, W. Va.  
 Farm J. C. Cotton Acres 45  
 Location (waters) Long Run  
 Well No. 20 Elev. 1047'  
 District Washington County Pleasants  
 The surface of tract is owned in fee by J.C. Cotton Heirs  
 Address \_\_\_\_\_  
 Mineral rights are owned by J.C. Cotton Heirs  
 Address \_\_\_\_\_  
 Drilling commenced \_\_\_\_\_  
 Drilling completed June, 1902  
 Date Shot \_\_\_\_\_ From \_\_\_\_\_ To \_\_\_\_\_  
 With \_\_\_\_\_  
 Open Flow \_\_\_\_\_ /10ths Water in \_\_\_\_\_ Inch  
 \_\_\_\_\_ /10ths Merc. in \_\_\_\_\_ Inch  
 Volume \_\_\_\_\_ Cu. Ft.  
 Rock Pressure \_\_\_\_\_ lbs. \_\_\_\_\_ hrs.  
 Oil \_\_\_\_\_ bbls., 1st 24 hrs.  
 WELL ACIDIZED \_\_\_\_\_  
 WELL FRACTURED \_\_\_\_\_

Casing and Tubing	Used in Drilling	Left in Well	Packers
Size			Kind of Packer
16			
13			
10			Size of
8 1/4			
6 1/4	<u>858'</u>		Depth set
5 3/16			
3			Perf. top
2			Perf. bottom
Liners Used			Perf. top
			Perf. bottom

CASING CEMENTED \_\_\_\_\_ SIZE \_\_\_\_\_ No. Ft. \_\_\_\_\_ Date \_\_\_\_\_

COAL WAS ENCOUNTERED AT \_\_\_\_\_ FEET \_\_\_\_\_ INCHES  
 \_\_\_\_\_ FEET \_\_\_\_\_ INCHES FEET \_\_\_\_\_ INCHES  
 \_\_\_\_\_ FEET \_\_\_\_\_ INCHES FEET \_\_\_\_\_ INCHES

RESULT AFTER TREATMENT

ROCK PRESSURE AFTER TREATMENT

Fresh Water \_\_\_\_\_ Feet Salt Water \_\_\_\_\_ Feet

Formation	Color	Hard or Soft	Top	Bottom	Oil, Gas or Water	Depth	Remarks
<u>Cow Run</u>			<u>873'</u>	<u>901'</u>			
<u>Total Depth</u>				<u>901'</u>			

APR 6 1962

