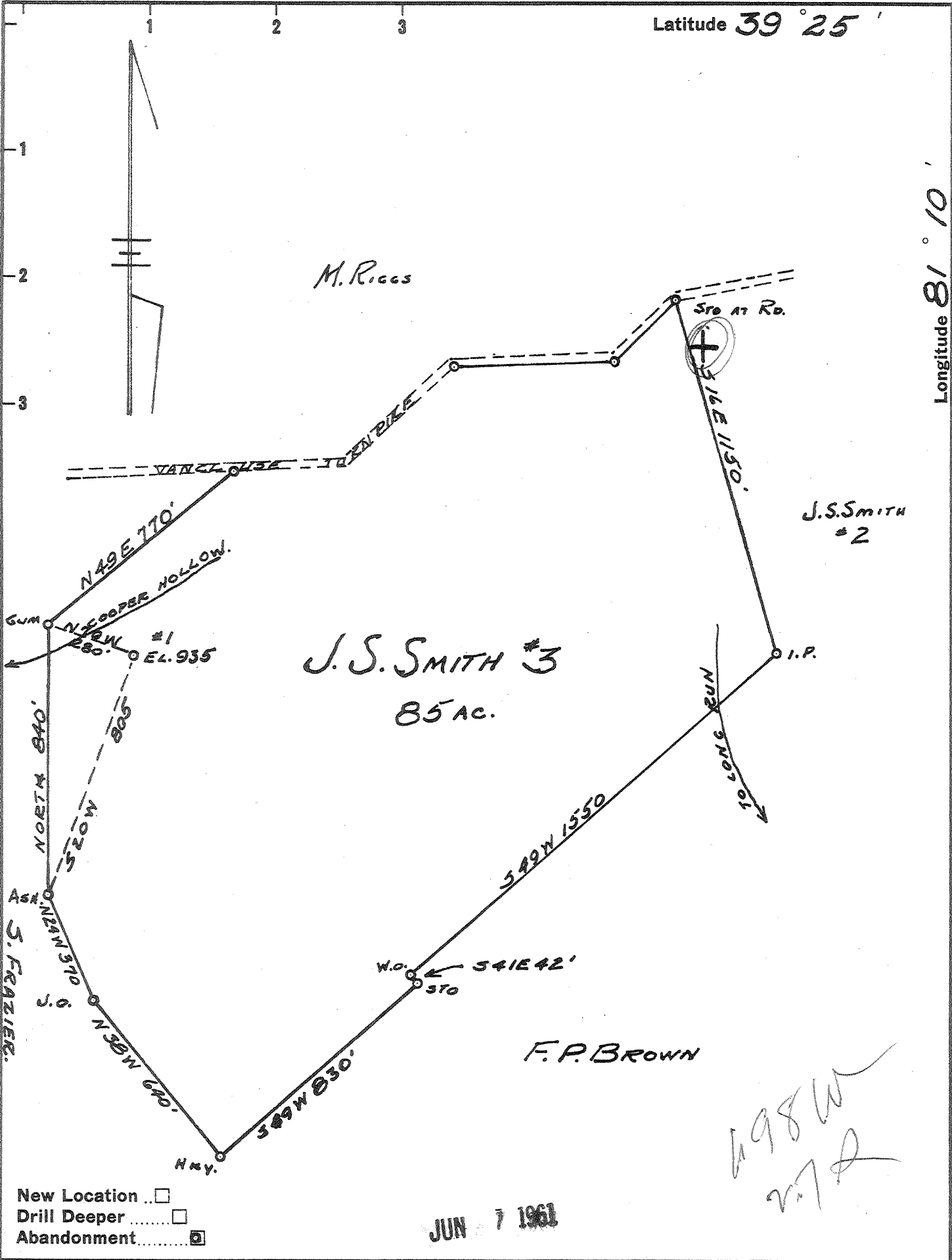


Latitude 39° 25'

Longitude 81° 10'



Company LEONARD HART
 Address ST. MARYS, W. VA.
 Farm J.S. SMITH
 Tract #3 Acres 85 Lease No. 11
 Well (Farm) No. 1 Serial No. 1
 Elevation (Spirit Level) 935'
 Quadrangle ST. MARYS.
 County PLEASANTS District WASHINGTON
 Engineer JOHN W. HAMILTON
 Engineer's Registration No. 2274
 File No. _____ Drawing No. 232
 Date SEPT. 10, 1960 Scale 1" = 400'

STATE OF WEST VIRGINIA
 DEPARTMENT OF MINES
 OIL AND GAS DIVISION
 CHARLESTON

WELL LOCATION MAP
 FILE NO. PLEAS-891-A

+ Denotes location of well on United States Topographic Maps, scale 1 to 62,500, latitude and longitude lines being represented by border lines as shown.

- Denotes one inch spaces on border line of original tracing.