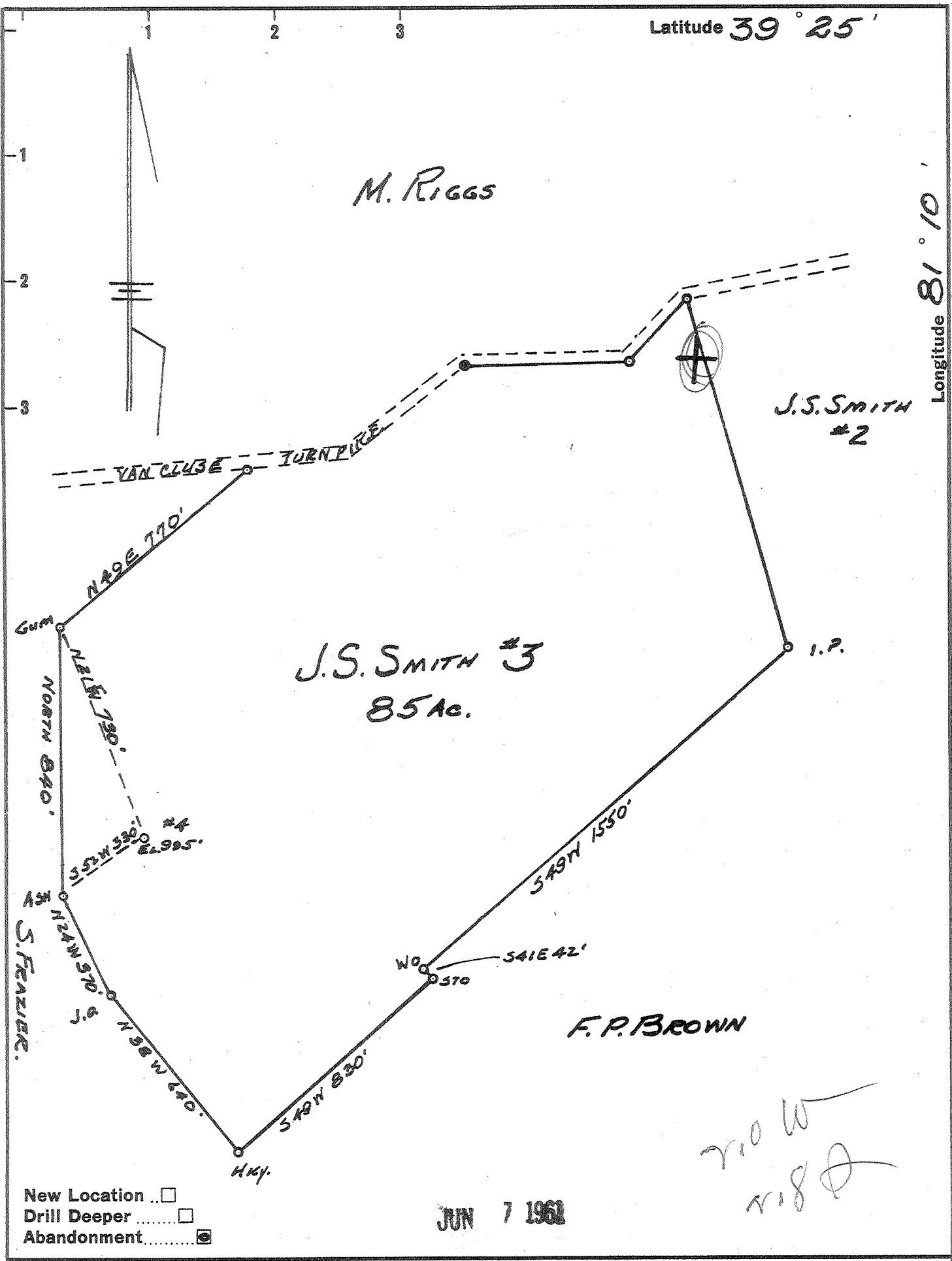


Latitude 39° 25'

Longitude 81° 10'



New Location   
 Drill Deeper   
 Abandonment

JUN 7 1962

710 W  
718

Company LEONARD HART  
 Address ST. MARYS, W. VA.  
 Farm J.S. SMITH  
 Tract 3 Acres 85 Lease No. 11  
 Well (Farm) No. 4 Serial No. \_\_\_\_\_  
 Elevation (Spirit Level) 995  
 Quadrangle ST MARYS  
 County PLEASANTS District WASHINGTON  
 Engineer JOHN W. HAMILTON  
 Engineer's Registration No. 2274  
 File No. \_\_\_\_\_ Drawing No. 235  
 Date SEPT 10, 1960 Scale 1" = 400'

STATE OF WEST VIRGINIA  
 DEPARTMENT OF MINES  
 OIL AND GAS DIVISION  
 CHARLESTON

WELL LOCATION MAP  
 FILE NO. Pleas-890-A

+ Denotes location of well on United States Topographic Maps, scale 1 to 62,500, latitude and longitude lines being represented by border lines as shown.  
 - Denotes one inch spaces on border line of original tracing.

J. S. SMITH 082-A

LEONARD HART

PLEAS-890-A