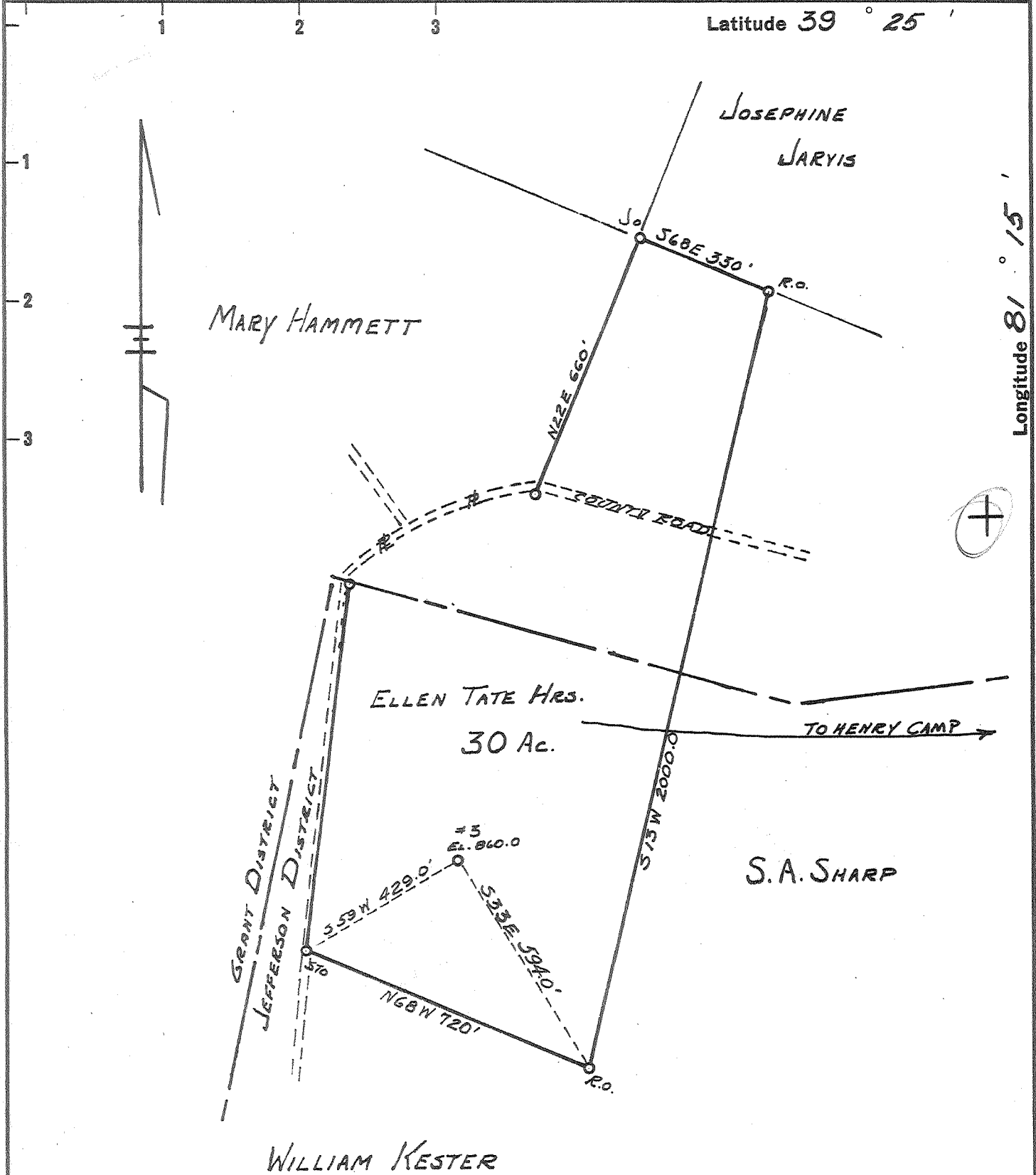


Latitude 39 ° 25 '

Longitude 81 ° 15 '



New Location
 Drill Deeper
 Abandonment

OCT 23 1960

0.32 W
 9.78 2

Company JOHN R DAUGHTERY
 Address ST. MARYS, W. VA.
 Farm ELLEN TATE HRS.
 Tract _____ Acres 30 Lease No. _____
 Well (Farm) No. 3 Serial No. _____
 Elevation (Spirit Level) 860.0'
 Quadrangle MARIETTA
 County PLEASANTS District JEFFERSON
 Engineer JOHN W. HAMILTON
 Engineer's Registration No. 2274
 File No. _____ Drawing No. 291
 Date OCT 10, 1960 Scale 1" = 330'

STATE OF WEST VIRGINIA
 DEPARTMENT OF MINES
 OIL AND GAS DIVISION
 CHARLESTON

WELL LOCATION MAP
 FILE NO. Pleas-885-A

+ Denotes location of well on United States Topographic Maps, scale 1 to 62,500; latitude and longitude lines being represented by border lines as shown.

- Denotes one inch spaces on border line of original tracing.

ELLEN TATE HEIRS No. 3 - JOHN R. DAUGHTERY - PLEAS-885-A