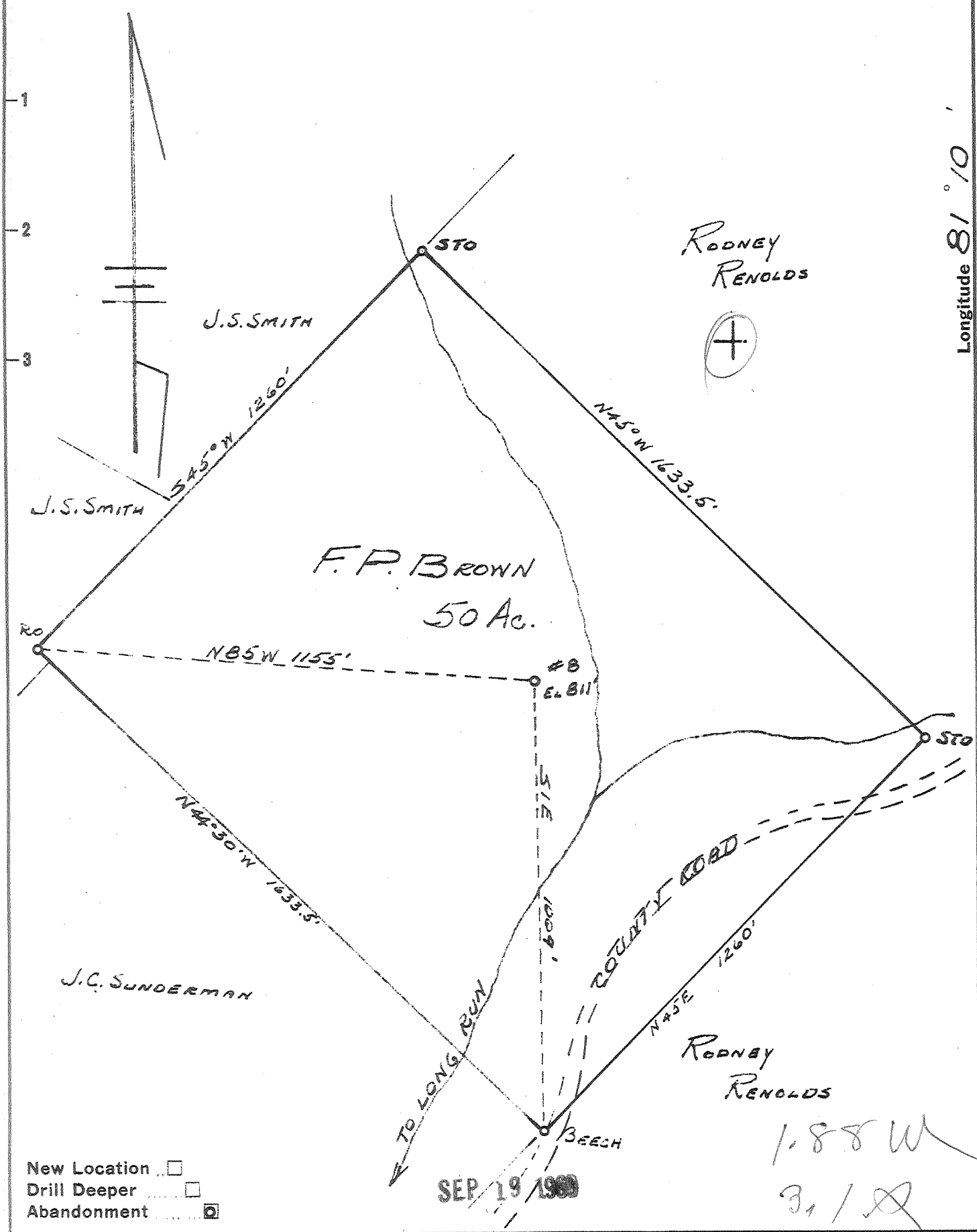


Latitude 39° 25'

Longitude 81° 10'



- New Location
- Drill Deeper
- Abandonment

SEP 19 1960

1.88 W  
B. / A

Company HART & HAMILTON  
 Address St. Marys, W. Va.  
 Farm F.P. BROWN  
 Tract \_\_\_\_\_ Acres 50 Lease No. 15  
 Well (Farm) No. 8 Serial No. \_\_\_\_\_  
 Elevation (Spirit Level) 811'  
 Quadrangle St. Marys  
 County FLEASANTS District WASHINGTON  
 Engineer JOHN W. HAMILTON  
 Engineer's Registration No. 2271  
 File No. \_\_\_\_\_ Drawing No. 227  
 Date Aug 30 1960 Scale 1" = 300'

STATE OF WEST VIRGINIA  
 DEPARTMENT OF MINES  
 OIL AND GAS DIVISION  
 CHARLESTON

**WELL LOCATION MAP**  
 FILE NO. PLEAS-879-A

- + Denotes location of well on United States Topographic Maps, scale 1 to 62,500, latitude and longitude lines being represented by border lines as shown.
- Denotes one inch spaces on border line of original tracing.

F.P. BROWN No. 8 - HART & HAMILTON - PLEAS-879-A