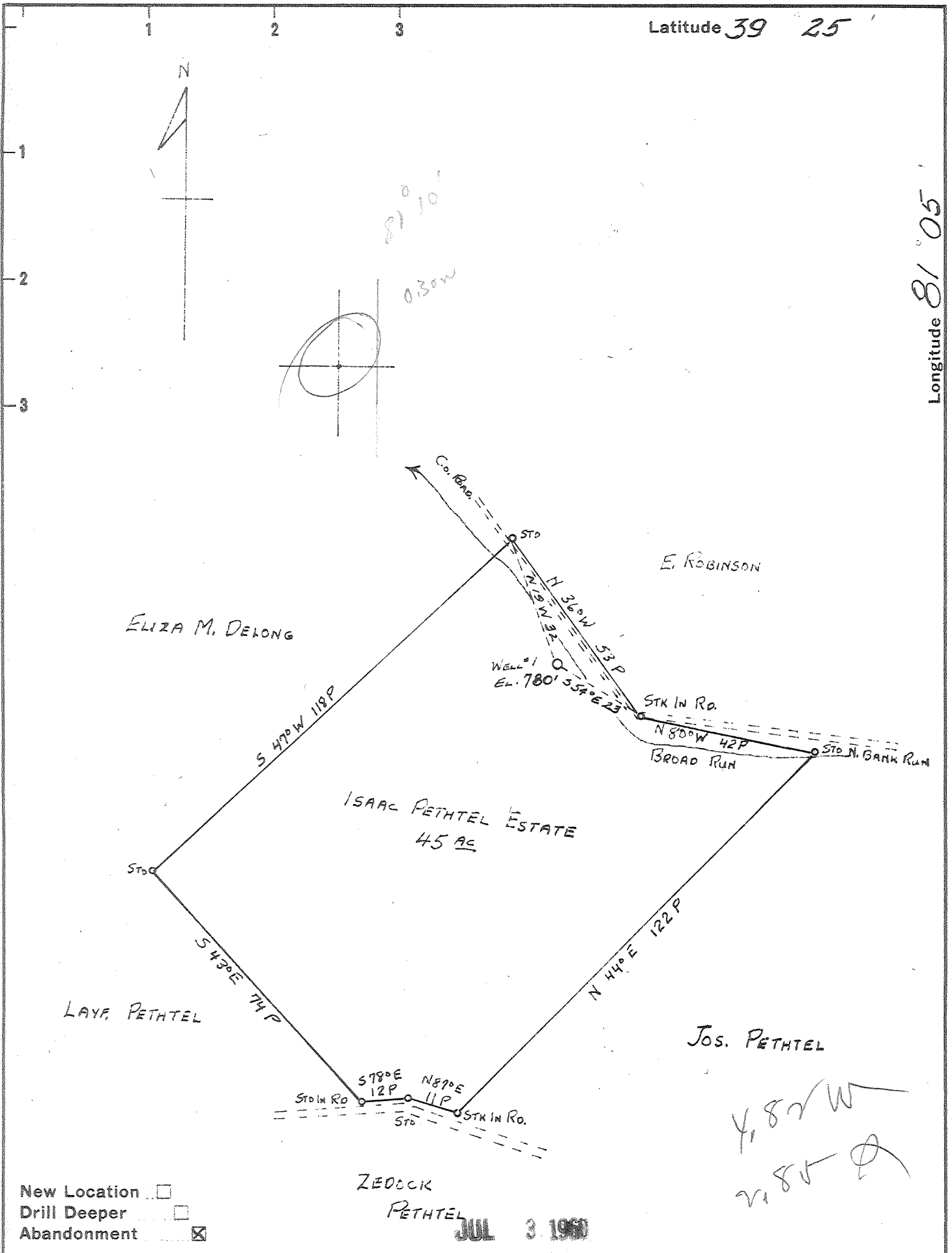


Latitude 39 25'

Longitude 81 05'



- New Location
- Drill Deeper
- Abandonment

Company HART & HAMILTON
 Address ST. MARYS, W. VA.
 Farm ISAAC PETHTEL ESTATE
 Tract _____ Acres 45 Lease No. 47
 Well (Farm) No. 1 Serial No. 123
 Elevation (Spirit Level) 780
 Quadrangle ST. MARYS
 County PLEASANTS District WASHINGTON
 Engineer JOHN W. HAMILTON
 Engineer's Registration No. 2274
 File No. _____ Drawing No. _____
 Date MAY 10, 1960 Scale 1" = 30 P

STATE OF WEST VIRGINIA
 DEPARTMENT OF MINES
 OIL AND GAS DIVISION
 CHARLESTON

WELL LOCATION MAP
 FILE NO. PLEAS-845-A

+ Denotes location of well on United States Topographic Maps, scale 1 to 62,500, latitude and longitude lines being represented by border lines as shown.
 - Denotes one inch spaces on border line of original tracing.