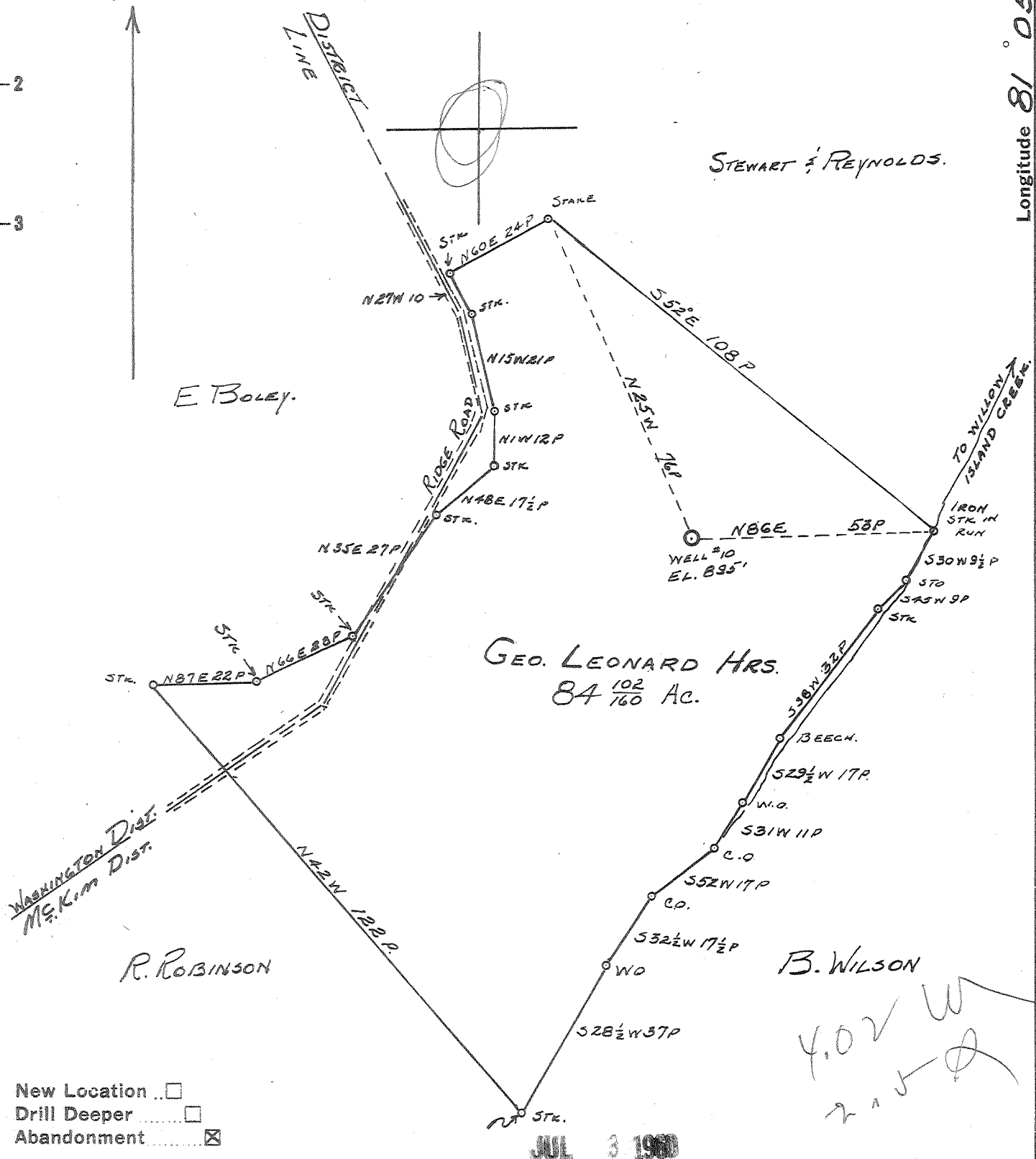


Latitude 39° 25'

Longitude 81° 05'



New Location   
 Drill Deeper   
 Abandonment

Company HART & HAMILTON  
 Address ST. MARYS. W. VA.  
 Farm GEO. LEONARD HRS.  
 Tract \_\_\_\_\_ Acres 84 102/160 Lease No. 122  
 Well (Farm) No. 10 Serial No. 110  
 Elevation (Spirit Level) 895'  
 Quadrangle ST. MARYS.  
 County PLEASANTS District MS. Kim  
 Engineer JOHN W. HAMILTON  
 Engineer's Registration No. 2274  
 File No. \_\_\_\_\_ Drawing No. \_\_\_\_\_  
 Date MAY 10, 1960 Scale 1" = 30P

STATE OF WEST VIRGINIA  
 DEPARTMENT OF MINES  
 OIL AND GAS DIVISION  
 CHARLESTON

WELL LOCATION MAP  
 FILE NO. PLEAS-842-A

+ Denotes location of well on United States Topographic Maps, scale 1 to 62,500, latitude and longitude lines being represented by border lines as shown.

- Denotes one inch spaces on border line of original tracing.

GEO. LEONARD HRS. #10 (110) - HART & HAMILTON - PLEAS 842-A