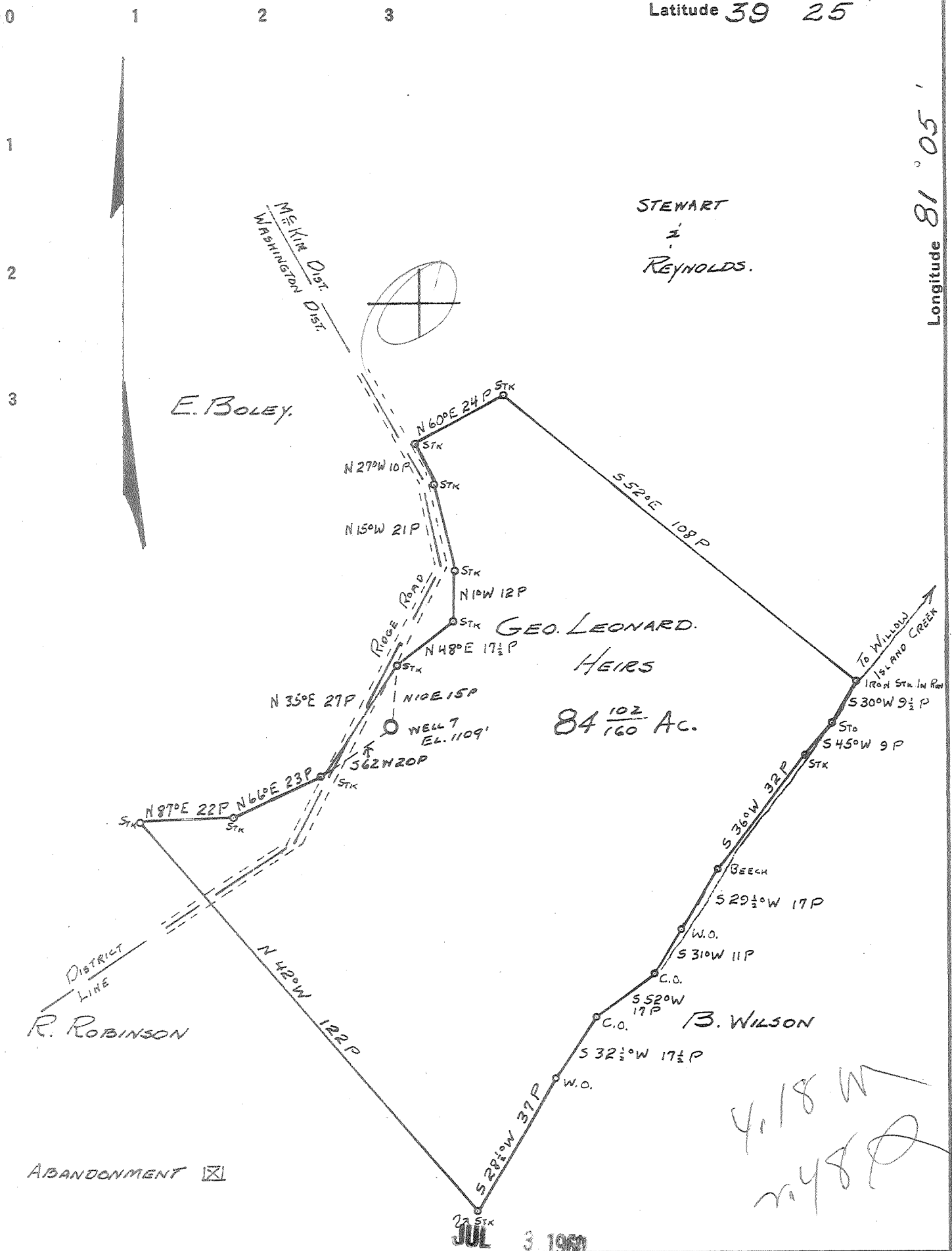


Latitude 39° 25'

Longitude 81° 05'



Company HART & HAMILTON  
 Address ST. MARYS, W.VA.  
 Farm GEO. LEONARD HRS.  
 Tract \_\_\_\_\_ Acres 84 <sup>102</sup>/<sub>160</sub> Lease No. 122  
 Well (Farm) No. 7 Serial No. 115  
 Elevation (Spirit Level) 1109'  
 Quadrangle ST. MARYS.  
 County PLEASANTS District McKIM  
 Engineer JOHN W. HAMILTON  
 Engineer's Registration No. 2274  
 File No. \_\_\_\_\_ Drawing No. \_\_\_\_\_  
 Date MAY 20, 1960 Scale 1" = 30P

STATE OF WEST VIRGINIA  
 DEPARTMENT OF MINES  
 OIL AND GAS DIVISION  
 CHARLESTON

**WELL LOCATION MAP**  
 FILE NO. PLEAS-839-A

† Denotes location of well on United States Topographic Maps, scale 1 to 62,500, latitude and longitude lines being represented by border lines as shown.

— Denotes one inch spaces on border line of original tracing.

GEO. LEONARD HRS. No. 7 (115) - HART & HAMILTON - PLEAS-839-A