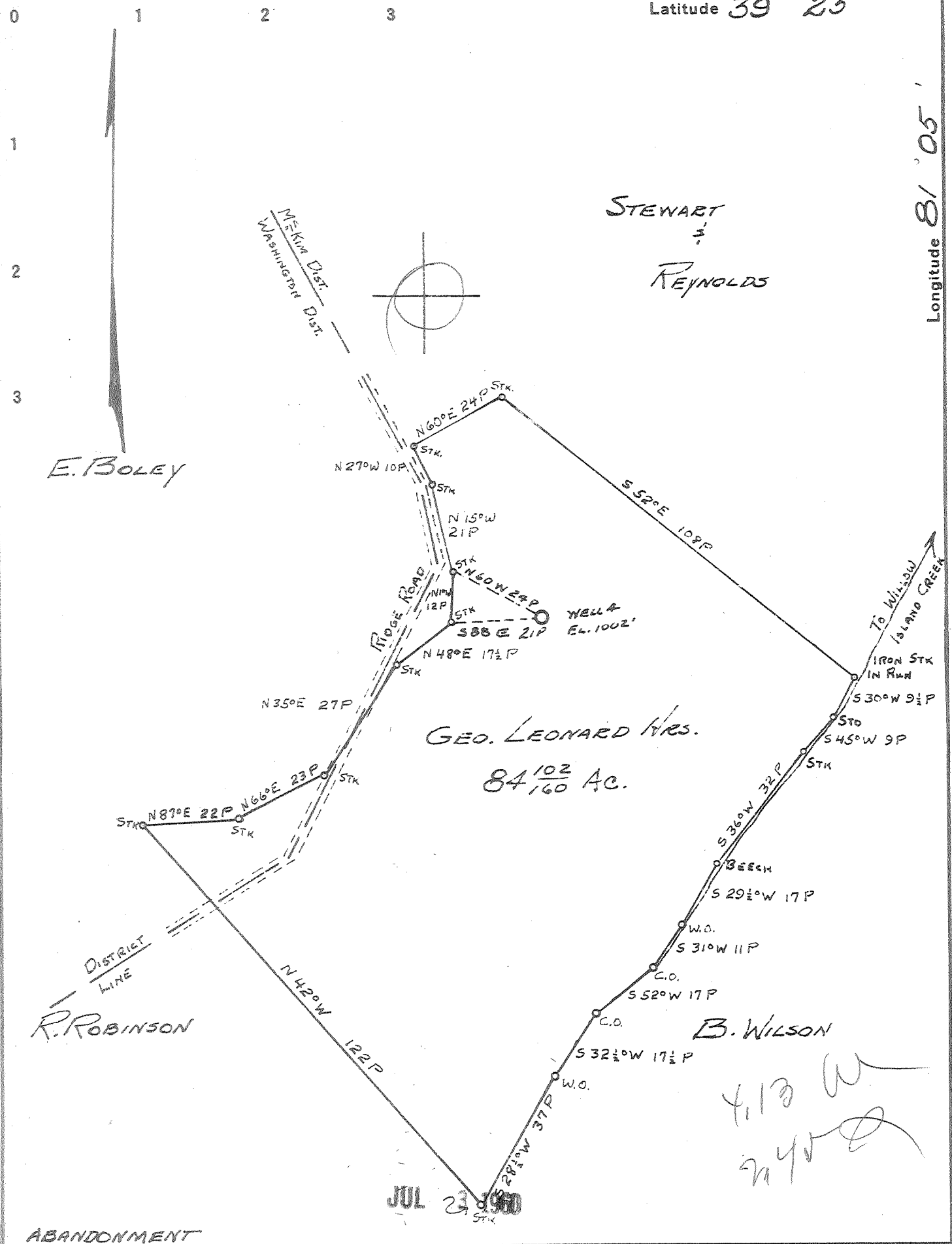


Latitude 39 25'

Longitude 81 05'



JUL 23 1960

ABANDONMENT

Company HART & HAMILTON  
 Address ST. MARYS, W.VA.  
 Farm GEO. LEONARD MRS.  
 Tract \_\_\_\_\_ Acres 84 102/160 Lease No. 122  
 Well (Farm) No. 4 Serial No. 107  
 Elevation (Spirit Level) 1002'  
 Quadrangle ST. MARYS  
 County PLEASANTS District McKIM  
 Engineer JOHN W. HAMILTON  
 Engineer's Registration No. 2274  
 File No. \_\_\_\_\_ Drawing No. \_\_\_\_\_  
 Date MAY 20, 1960 Scale 1" = 30P

STATE OF WEST VIRGINIA  
 DEPARTMENT OF MINES  
 OIL AND GAS DIVISION  
 CHARLESTON

WELL LOCATION MAP  
 FILE NO. PLEAS-837-A

† Denotes location of well on United States Topographic Maps, scale 1 to 62,500, latitude and longitude lines being represented by border lines as shown.

— Denotes one inch spaces on border line of original tracing.

GEO. LEONARD MRS, No. A(107) - HART & HAMILTON - PLEAS-837-A