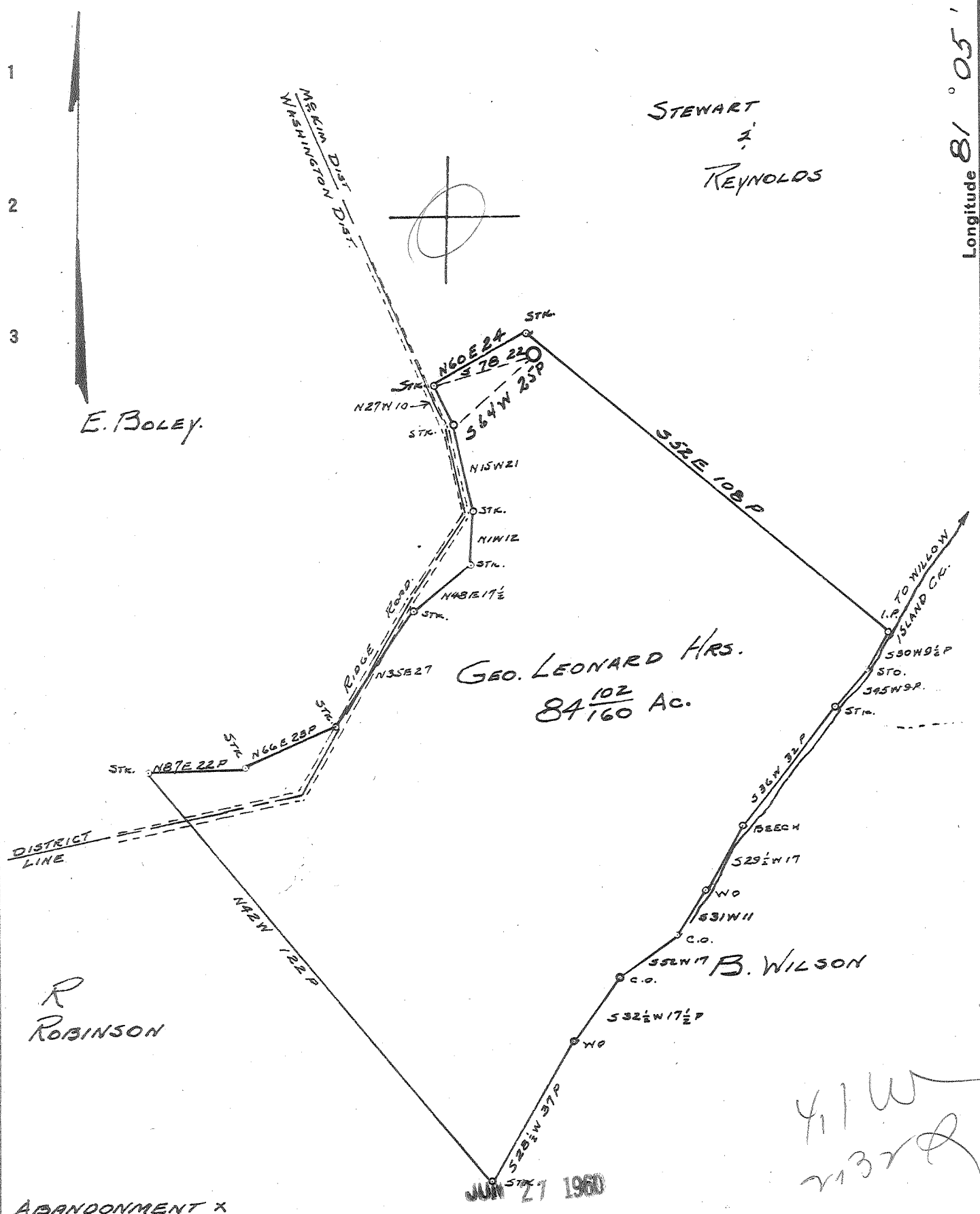


Latitude 39° 25'

Longitude 81° 05'



ABANDONMENT X

Company	HART & HAMILTON
Address	ST. MARYS, W. VA.
Farm	GEO. LEONARD HRS.
Tract	Acres 84 ¹⁰² / ₁₆₀ Lease No. 122
Well (Farm) No.	2 Serial No. 114
Elevation (Spirit Level)	970
Quadrangle	ST. MARYS
County	PLEASANTS District M&KIM
Engineer	JOHN W HAMILTON
Engineer's Registration No.	2274
File No.	Drawing No.
Date	MAY 20, 1960 Scale 1" = 30 P

STATE OF WEST VIRGINIA
DEPARTMENT OF MINES
OIL AND GAS DIVISION
CHARLESTON

WELL LOCATION MAP
FILE NO. PLEAS-835-A

+ Denotes location of well on United States Topographic Maps, scale 1 to 62,500, latitude and longitude lines being represented by border lines as shown.

- Denotes one inch spaces on border line of original tracing.

GEO. LEONARD HRS No. 2 (114) - HART & HAMILTON - PLEAS-835-A