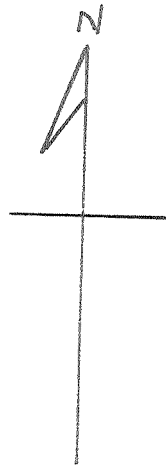


Latitude 39° 25'

Longitude 81° 10'



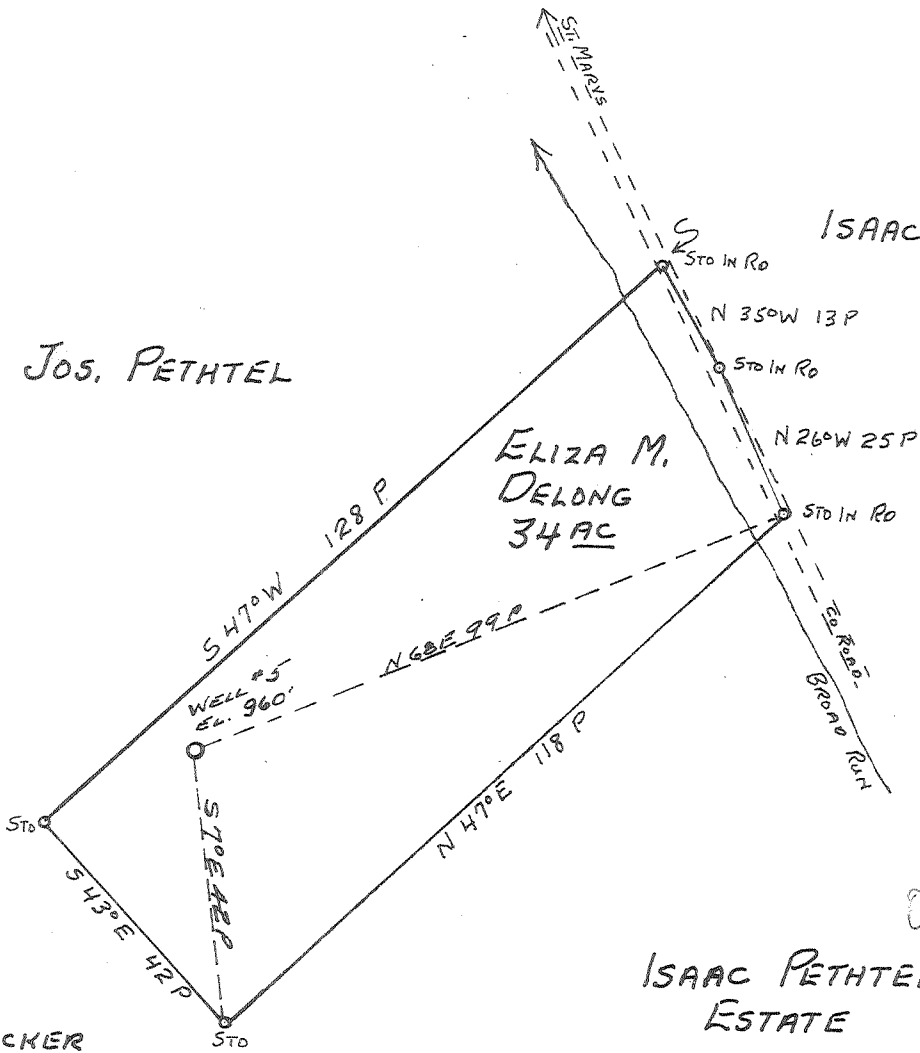
JOS. PETHTEL

ISAAC PETHTEL

ELIZA M. DELONG  
34 AC

ISAAC PETHTEL  
ESTATE

0.48 W  
71° 95'



C. C. SCHAUWECKER

- New Location
- Drill Deeper
- Abandonment

JUN 27 1960

Company	HART & HAMILTON
Address	ST MARYS, W. VA.
Farm	ELIZA M. DELONG
Tract	Acres 34 Lease No. 46
Well (Farm) No.	5 Serial No. 156
Elevation (Spirit Level)	960'
Quadrangle	ST. MARYS
County	PLEASANTS District WASHINGTON
Engineer	JOHN W. HAMILTON
Engineer's Registration No.	2274
File No.	Drawing No.
Date	MAY 10 1960 Scale 1" = 30 P

STATE OF WEST VIRGINIA  
DEPARTMENT OF MINES  
OIL AND GAS DIVISION  
CHARLESTON

WELL LOCATION MAP  
FILE NO. PLEAS-832-A

+ Denotes location of well on United States Topographic Maps, scale 1 to 62,500, latitude and longitude lines being represented by border lines as shown.

- Denotes one inch spaces on border line of original tracing.

ELIZA M. DELONG 165 (156) - HART & HAMILTON - PLEAS-832-A

Washington District, Pleasants County, W. Va.  
 On Broad Run, 2 mi. S. E. of St. Marys.  
 Bartlett & Standcliffe.

829A

	Top.	Bottom.
Cow Run Sand (oil, 617-630')	610	631
Total depth		649

ELIZA DeLONG NO. 2 WELL.

Not located. 515

	Top.	Bottom.
8 1/2" casing, 335'; 6 1/2", 735'		
Cow Run Sand	762	783
Total depth		795

ELIZA DeLONG NO. 3 WELL.

Not located. 516

	Top.	Bottom.
8 1/2" casing, 325'; 6 1/2", 800'		
Cow Run Sand	800	815
Total depth		823

ELIZA DeLONG NO. 4 WELL.

Not located. 517

	Top.	Bottom.
8 1/2" casing, 455'; 6 1/2", 915'		
Cow Run Sand	926	941
Total depth		945

830A

ELIZA DeLONG NO. 5 WELL.

Not located. 518

	Top.	Bottom.
8 1/2" casing, 475'; 6 1/2", 935'		
Cow Run Sand	944	962
Total depth		996

832A

ELIZA DELONG (DULONG?) NO. 5 WELL. No. 7 (pt.) O.F.-Pleasants

*Washington*  
.....District, Pleasants County, W. Va.  
Bartlett & Stancliffe.  
Completed in 1896.  
On Broad Run, 2 $\frac{1}{2}$  mi. E. from St. Marys.  
Conductor, 12'; 8 $\frac{1}{2}$ " casing, 475'; 6 $\frac{1}{2}$ ", 935'.

8324

	Top.	Bottom.
Cow Run Sand	944	962
Total depth		996