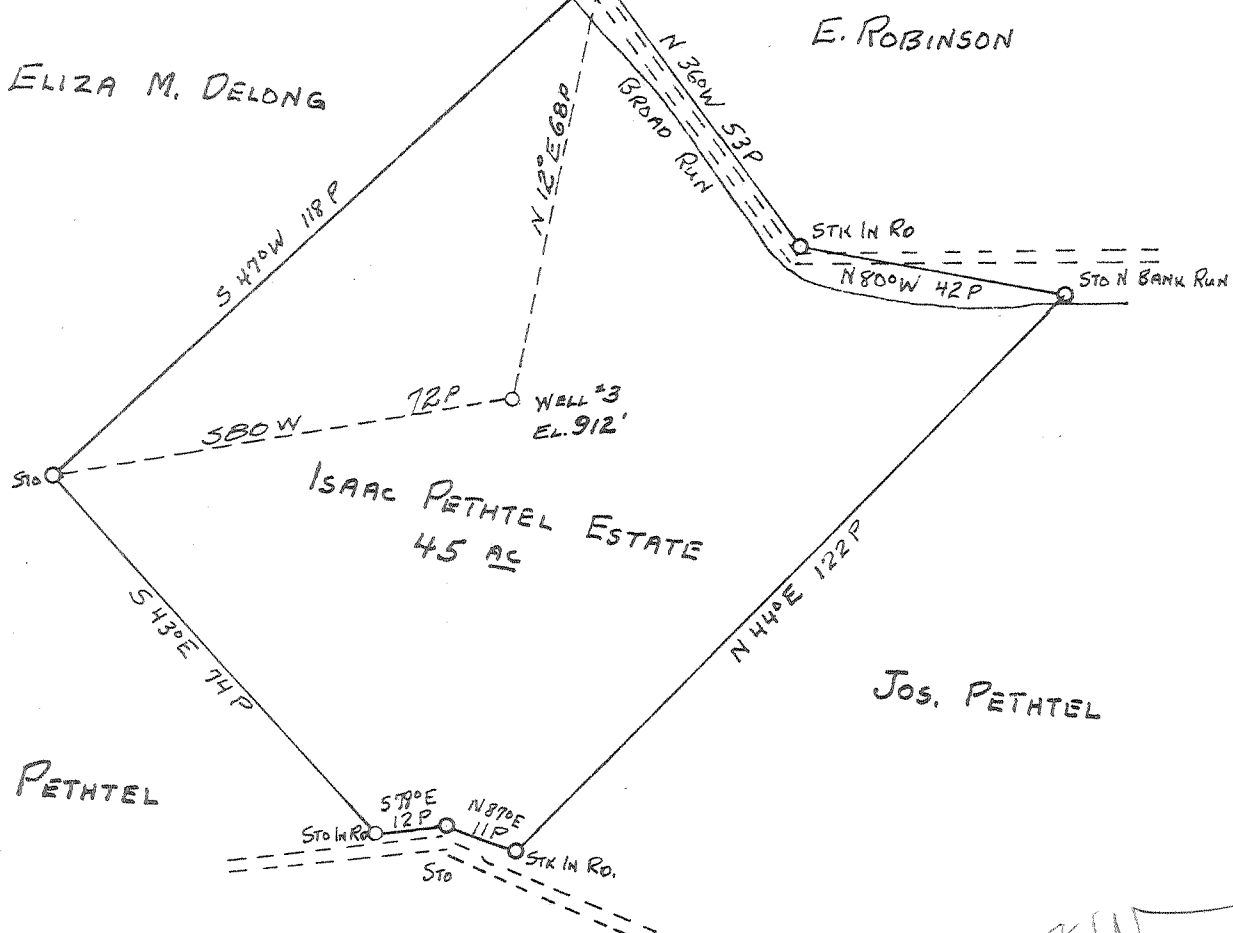
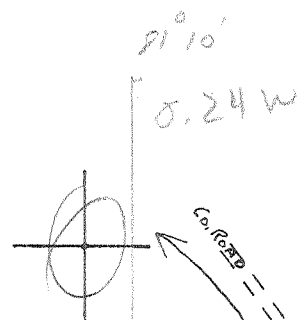


Latitude 39° 25'

Longitude 81° 05'



New Location
Drill Deeper
Abandonment

JUN 27 1960

Company	HART & HAMILTON
Address	ST. MARYS, W.VA.
Farm	ISAAC PETHTEL ESTATE
Tract	Acres 45 Lease No. 47
Well (Farm) No.	3 Serial No. 154
Elevation (Spirit Level)	912'
Quadrangle	ST. MARYS
County	PLEASANTS District WASHINGTON
Engineer	JOHN W. HAMILTON
Engineer's Registration No.	2274
File No.	Drawing No.
Date	MAY 10, 1960 Scale 1"=30 P

STATE OF WEST VIRGINIA
DEPARTMENT OF MINES
OIL AND GAS DIVISION
CHARLESTON

WELL LOCATION MAP
FILE NO. PLEAS-828-A

+ Denotes location of well on United States Topographic Maps, scale 1 to 62,500, latitude and longitude lines being represented by border lines as shown.
- Denotes one inch spaces on border line of original tracing.

ISAAC PETHTEL ESTATE NO. 3 (154) - HART & HAMILTON - PLEAS-828-A