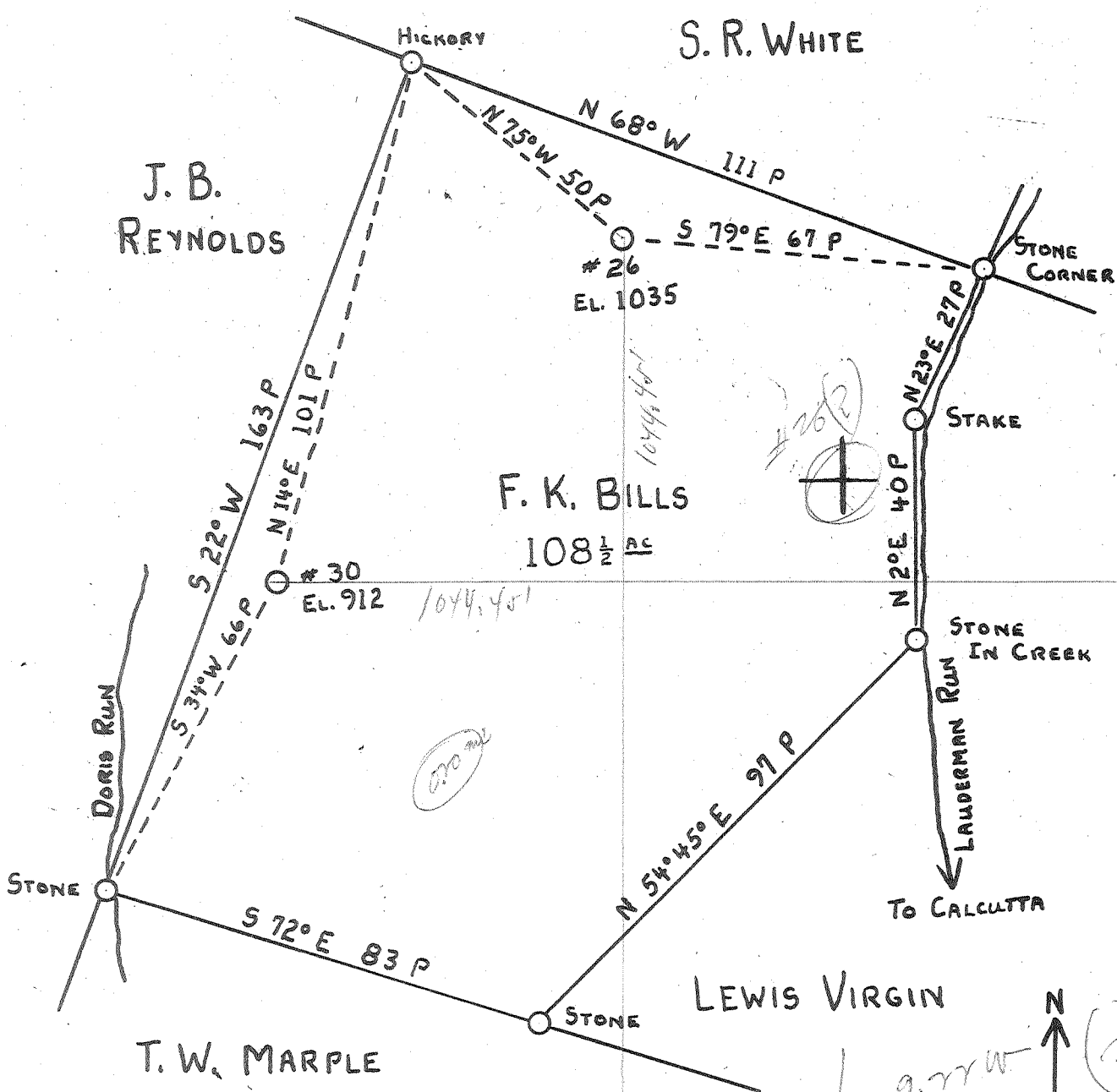


Latitude 39° 25'

Longitude 81° 10'



New Location   
 Drill Deeper   
 Abandonment

JUN 6 1960

STATE OF WEST VIRGINIA  
 DEPARTMENT OF MINES  
 OIL AND GAS DIVISION  
 CHARLESTON

WELL LOCATION MAP

FILE NO. PLEAS-819-A #26  
 PLEAS-821-A #30

+ Denotes location of well on United States Topographic Maps, scale 1 to 62,500, latitude and longitude lines being represented by border lines as shown.

- Denotes one inch spaces on border line of original tracing.

Company HART & HAMILTON  
 Address Box 26, ST. MARYS, W. VA.  
 Farm F. K. BILLS  
 Tract \_\_\_\_\_ Acres 108 1/2 Lease No. \_\_\_\_\_  
 Well (Farm) No. 26 & 30 Serial No. 21  
 Elevation (Spirit Level) #26-1035 & #30-912'  
 Quadrangle ST. MARYS  
 County PLEASANTS District WASHINGTON  
 Engineer JOHN W. HAMILTON  
 Engineer's Registration No. 2274  
 File No. \_\_\_\_\_ Drawing No. \_\_\_\_\_  
 Date 11-21-59 Scale 1" = 30 P

F. K. BILLS OWS. 76cc 30 - HART & HAMILTON - PLEAS-819&821-A