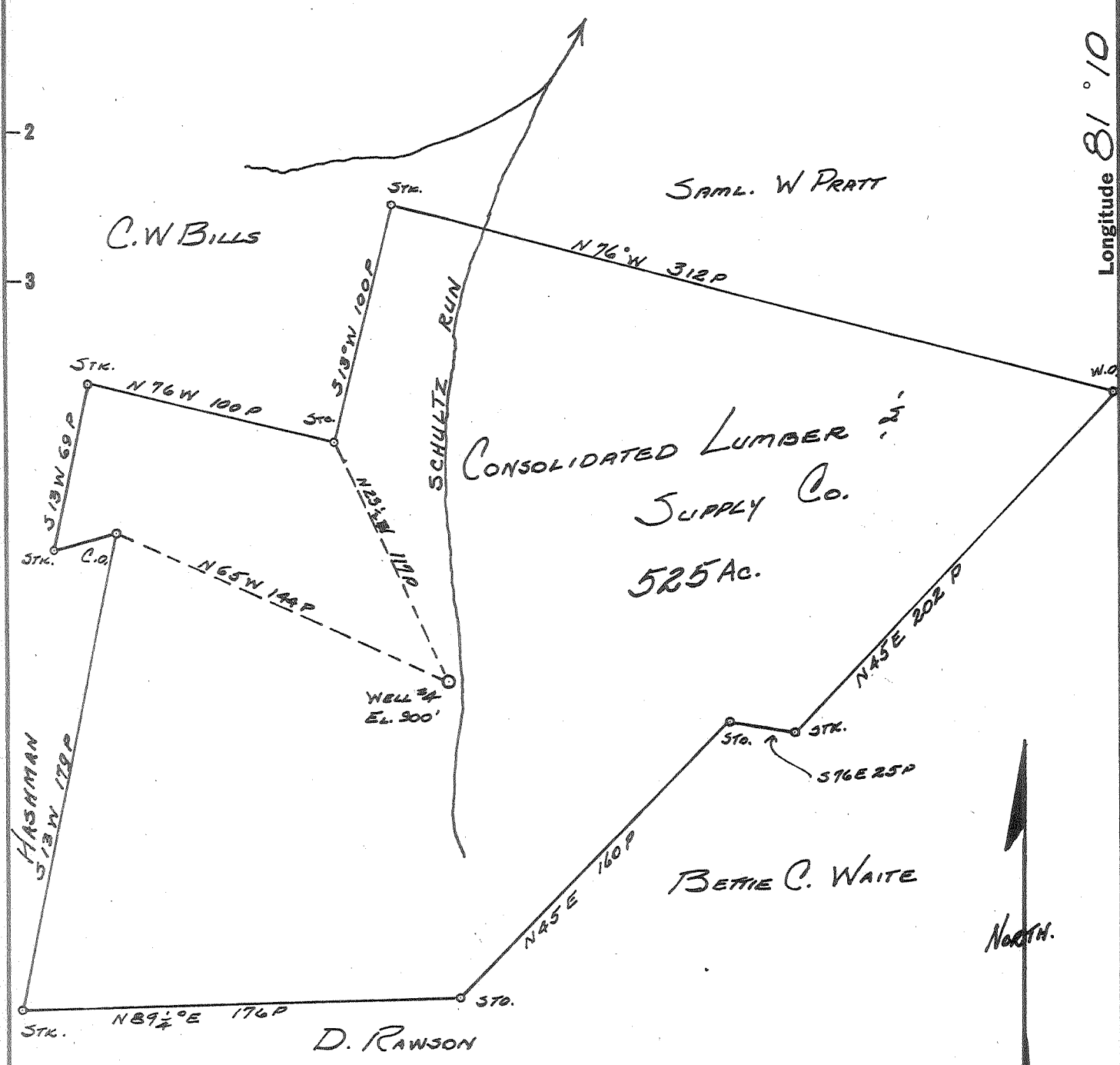


Latitude 39° 20'



Longitude 81° 10'



- New Location
- Drill Deeper
- Abandonment

JUN 6 1960

1.9 W  
0.7 S

Company HART & HAMILTON  
 Address ST. MARKS, W. Va.  
 Farm CONSOL. LUMBER & SUPPLY CO.  
 Tract \_\_\_\_\_ Acres 525 Lease No. 161  
 Well (Farm) No. 4 Serial No. 158  
 Elevation (Spirit Level) 900'  
 Quadrangle ST. MARYS  
 County PLEASANTS District JEFFERSON  
 Engineer JOHN W HAMILTON  
 Engineer's Registration No. 2274  
 File No. \_\_\_\_\_ Drawing No. \_\_\_\_\_  
 Date MAY 10, 1960 Scale 1" = 60 P.

STATE OF WEST VIRGINIA  
 DEPARTMENT OF MINES  
 OIL AND GAS DIVISION  
 CHARLESTON

**WELL LOCATION MAP**  
 FILE NO. PLEAS-811-A

+ Denotes location of well on United States Topographic Maps, scale 1 to 62,500, latitude and longitude lines being represented by border lines as shown.

- Denotes one inch spaces on border line of original tracing.