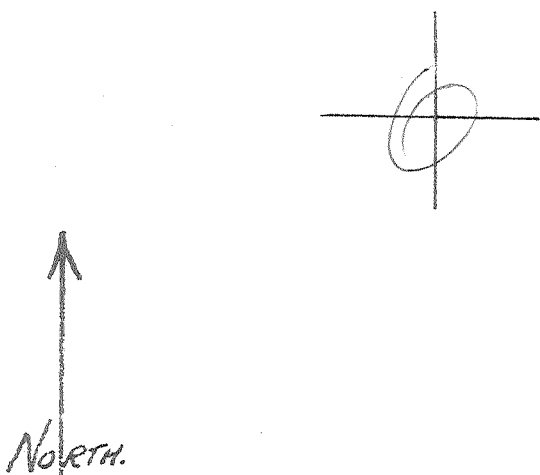
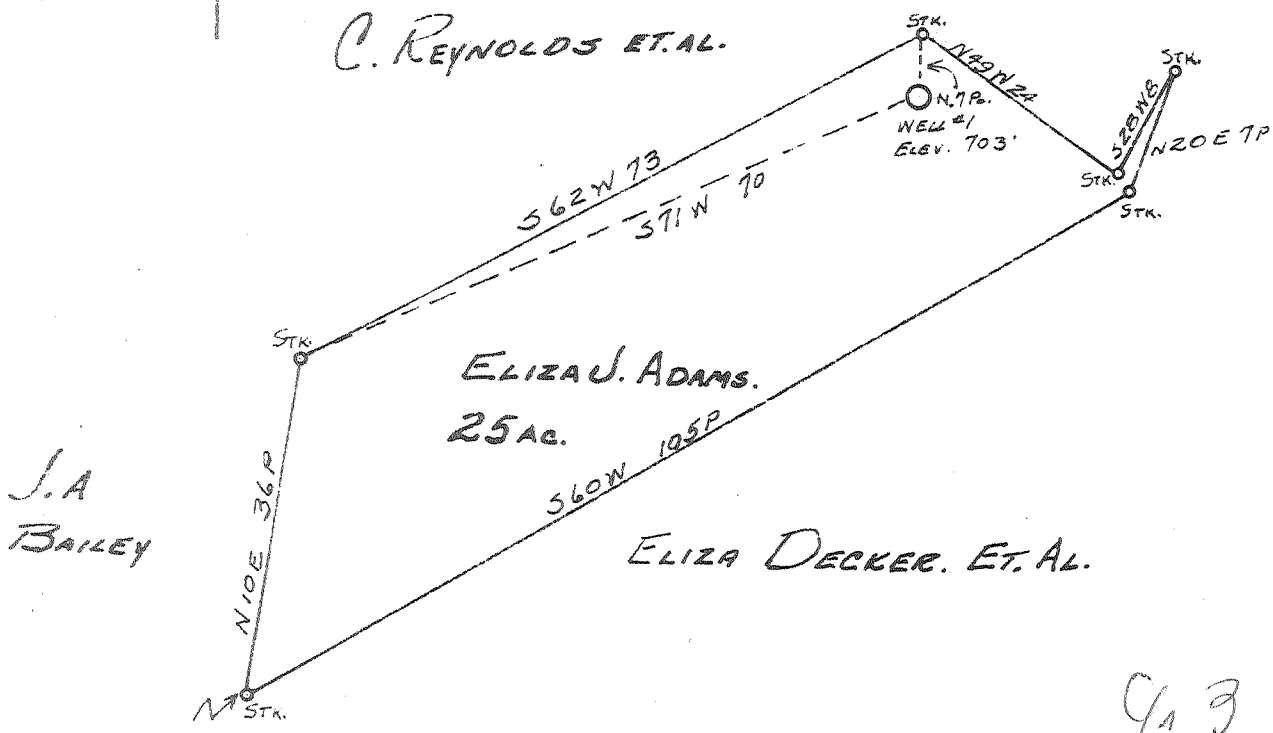


0 1 2 3 Latitude $39^{\circ} 25'$

1
2
3 Longitude $81^{\circ} 05'$



C. REYNOLDS ET AL. RALPH ROISEY



G 3 W
1832

MAY 23 1960

ABANDONMENT

Company	HART & HAMILTON
Address	ST. MARYS, W. VA.
Farm	ELIZA J ADAMS
Tract	Acres 25 Lease No. 130
Well (Farm) No.	1 Serial No. 91
Elevation (Spirit Level)	703'
Quadrangle	ST. MARYS.
County	PLEASANTS District M ^c KIM.
Engineer	JOHN W HAMILTON
Engineer's Registration No.	2274
File No.	Drawing No.
Date	MAY 1, 1960 Scale 1" = 20P

STATE OF WEST VIRGINIA
DEPARTMENT OF MINES
OIL AND GAS DIVISION
CHARLESTON

WELL LOCATION MAP
FILE NO. PLEAS-802-A

+ Denotes location of well on United States Topographic Maps, scale 1 to 62,500, latitude and longitude lines being represented by border lines as shown.
- Denotes one inch spaces on border line of original tracing.

ELIZA J. ADAMS no. 1(91) - HART & HAMILTON - PLEAS-802-A