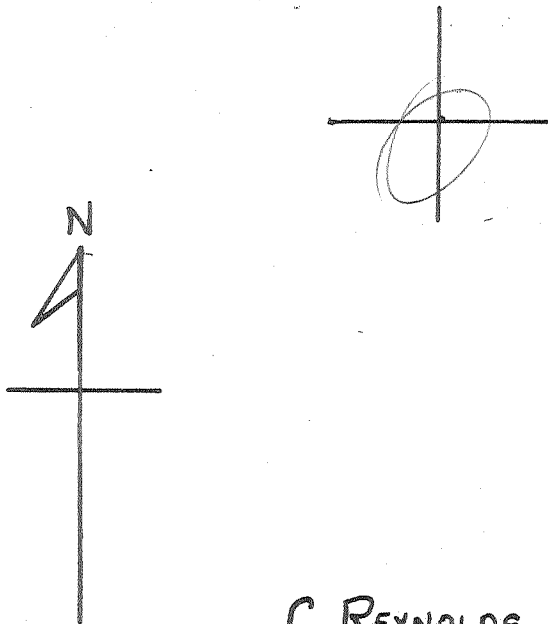


0 1 2 3

Latitude 39° 25'

Longitude 81° 05'



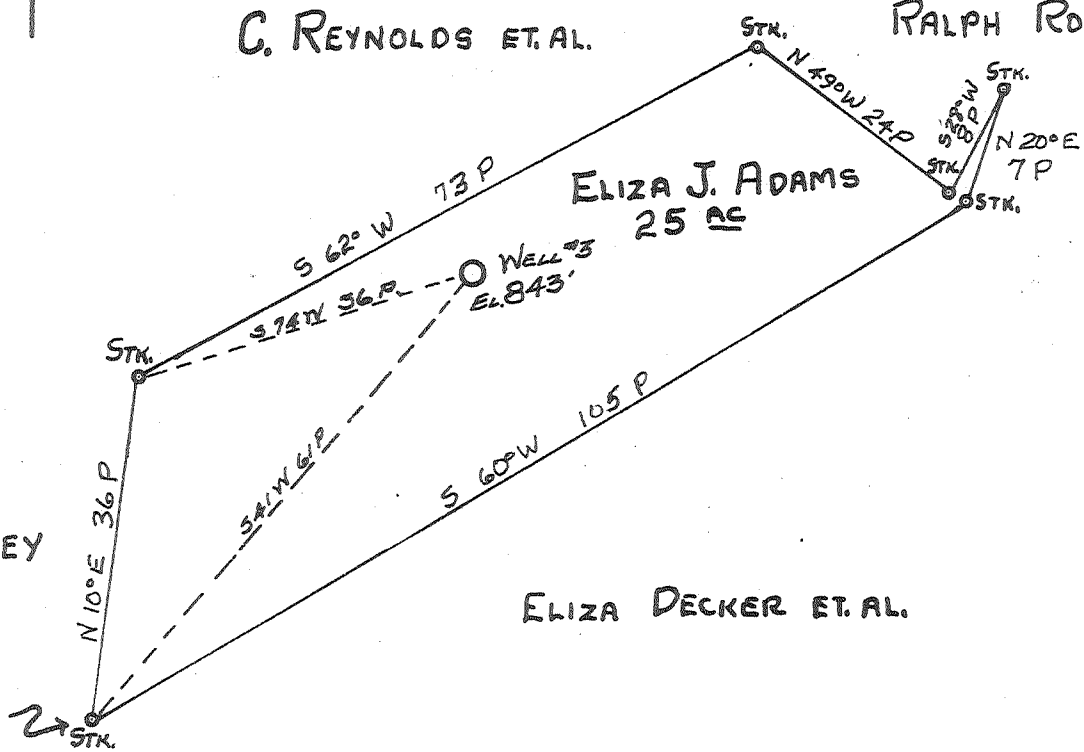
C. REYNOLDS ET AL.

RALPH ROBY

ELIZA J. ADAMS
25 AC

J.A. BAILEY

ELIZA DECKER ET AL.



4.48 W
1.97 Q

MAY 17 1960

ABANDONMENT

| | | | |
|-----------------------------|----------------------------|------------|---------|
| Company | HART & HAMILTON | | |
| Address | ST. MARYS, W. VA. | | |
| Farm | ELIZA J. ADAMS | | |
| Tract | Acres | Lease No. | |
| | 25 | 130 | |
| Well (Farm) No. | 3 | Serial No. | 93 |
| Elevation (Spirit Level) | 843 | | |
| Quadrangle | ST. MARYS | | |
| County | PLEASANTS | District | M & KIM |
| Engineer | JOHN W. HAMILTON | | |
| Engineer's Registration No. | 2274 | | |
| File No. | Drawing No. | | |
| Date | MAY 1, 1960 Scale 1" = 20P | | |

STATE OF WEST VIRGINIA
DEPARTMENT OF MINES
OIL AND GAS DIVISION
CHARLESTON

WELL LOCATION MAP
FILE NO. PLEAS-797-A

+ Denotes location of well on United States Topographic Maps, scale 1 to 62,500, latitude and longitude lines being represented by border lines as shown.

- Denotes one inch spaces on border line of original tracing.

ELIZA J. ADAMS No. 3 (93) - HART & HAMILTON - PLEAS-797-A