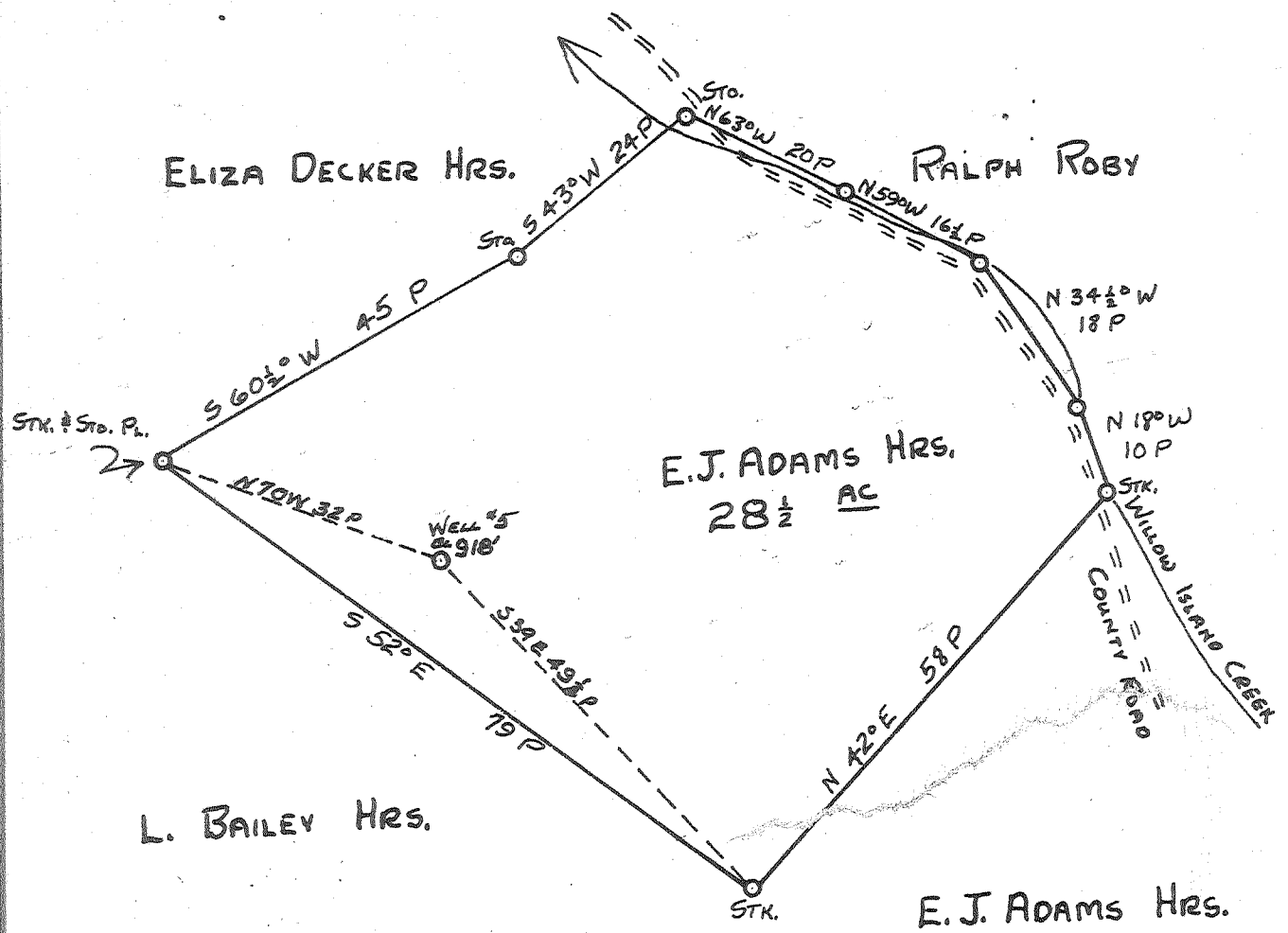
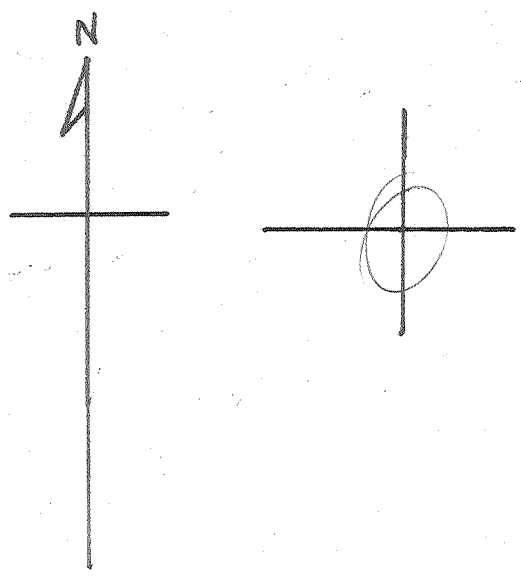


Latitude 39° 25'

Longitude 81° 05'

0 1 2 3

1  
2  
3



ABANDONMENT

MAY 17 1960

*Y. Y. W.*  
*M. O. J.*

Company	HART & HAMILTON
Address	ST. MARYS, W.VA.
Farm	E. J. ADAMS HRS.
Tract	Acres 28 1/2 Lease No. 123
Well (Farm) No.	5 Serial No. 96
Elevation (Spirit Level)	918'
Quadrangle	ST. MARYS
County	PLEASANTS District MCKIM
Engineer	JOHN W. HAMILTON
Engineer's Registration No.	2274
File No.	Drawing No.
Date	MAY 1, 1960 Scale 1" = 20 P

STATE OF WEST VIRGINIA  
DEPARTMENT OF MINES  
OIL AND GAS DIVISION  
CHARLESTON

WELL LOCATION MAP  
FILE NO. PLEAS-795-A

† Denotes location of well on United States Topographic Maps, scale 1 to 62,500, latitude and longitude lines being represented by border lines as shown.

— Denotes one inch spaces on border line of original tracing.

E.J. ADAMS HEIRS No. 5 (96) - HART & HAMILTON - PLEAS-795-A