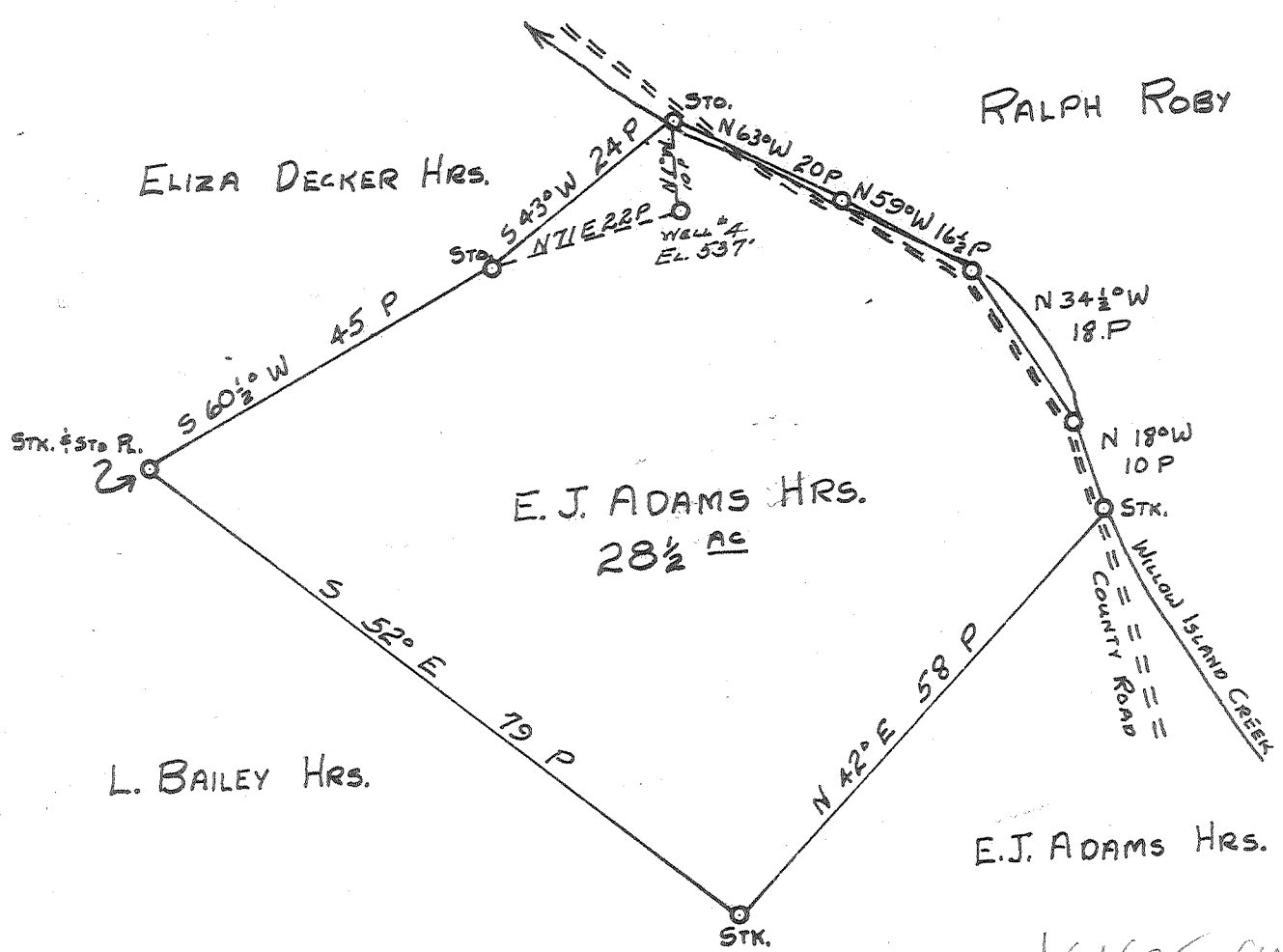
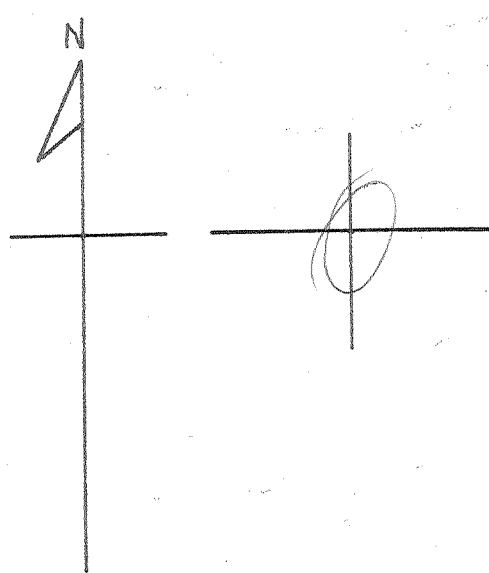


Latitude 39° 25'

0 1 2 3

Longitude 81° 05'



| | |
|-----------------------------|-----------------------------|
| Company | HART & HAMILTON |
| Address | ST. MARYS, W.VA. |
| Farm | E.J. ADAMS HRS. |
| Tract | Acres 28½ Lease No. 123 |
| Well (Farm) No. | 4 Serial No. 98 |
| Elevation (Spirit Level) | 537' |
| Quadrangle | ST. MARYS |
| County | PLEASANTS District M & KIM |
| Engineer | JOHN W. HAMILTON |
| Engineer's Registration No. | 2274 |
| File No. | Drawing No. |
| Date | MAY 1, 1960 Scale 1" = 20 P |

STATE OF WEST VIRGINIA
DEPARTMENT OF MINES
OIL AND GAS DIVISION
CHARLESTON

WELL LOCATION MAP
FILE NO. PLEAS-794-A

† Denotes location of well on United States Topographic Maps, scale 1 to 62,500, latitude and longitude lines being represented by border lines as shown.

— Denotes one inch spaces on border line of original tracing.

E.J. ADAMS HRS. NO. 4 (98) - HART & HAMILTON - PLEAS-794-A