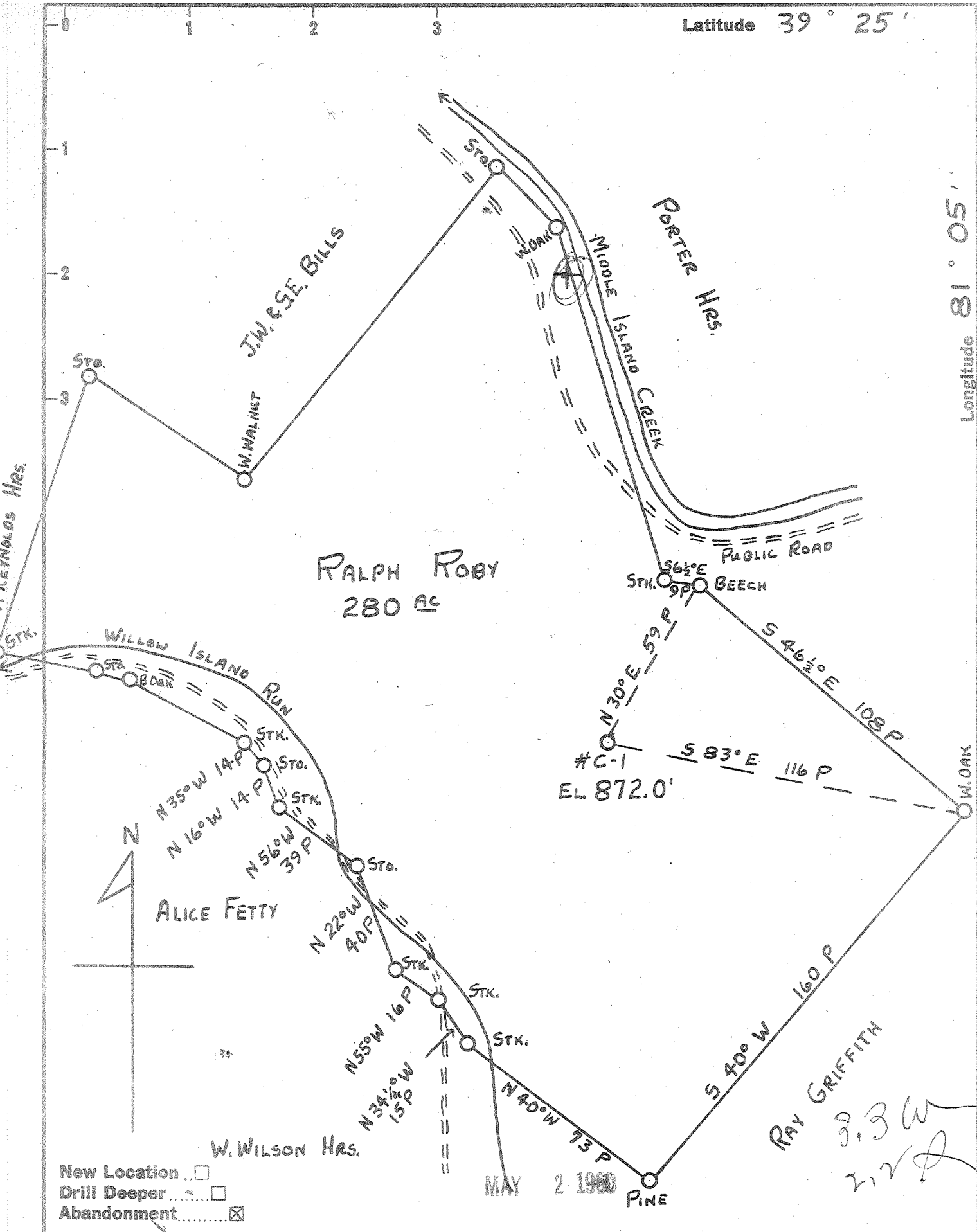


Latitude 39° 25'

Longitude 81° 05'



New Location
 Drill Deeper
 Abandonment

Company HART & HAMILTON
 Address BOX 26 ST. MARYS, W. VA.
 Farm RALPH ROBY
 Tract _____ Acres 280 Lease No. _____
 Well (Farm) No. C-1 Serial No. 69
 Elevation (Spirit Level) 872.0'
 Quadrangle ST. MARYS
 County PLEASANTS District McKIM
 Engineer JOHN W. HAMILTON
 Engineer's Registration No. 2274
 File No. _____ Drawing No. _____
 Date 3-26-60 Scale 1" = 40 P

STATE OF WEST VIRGINIA
 DEPARTMENT OF MINES
 OIL AND GAS DIVISION
 CHARLESTON

WELL LOCATION MAP
 FILE NO. PLEAS-789-A

+ Denotes location of well on United States Topographic Maps, scale 1 to 62,500, latitude and longitude lines being represented by border lines as shown.
 - Denotes one inch spaces on border line of original tracing.

RALPH ROBY No. C-1(69) - HART & HAMILTON - PLEAS-789-A