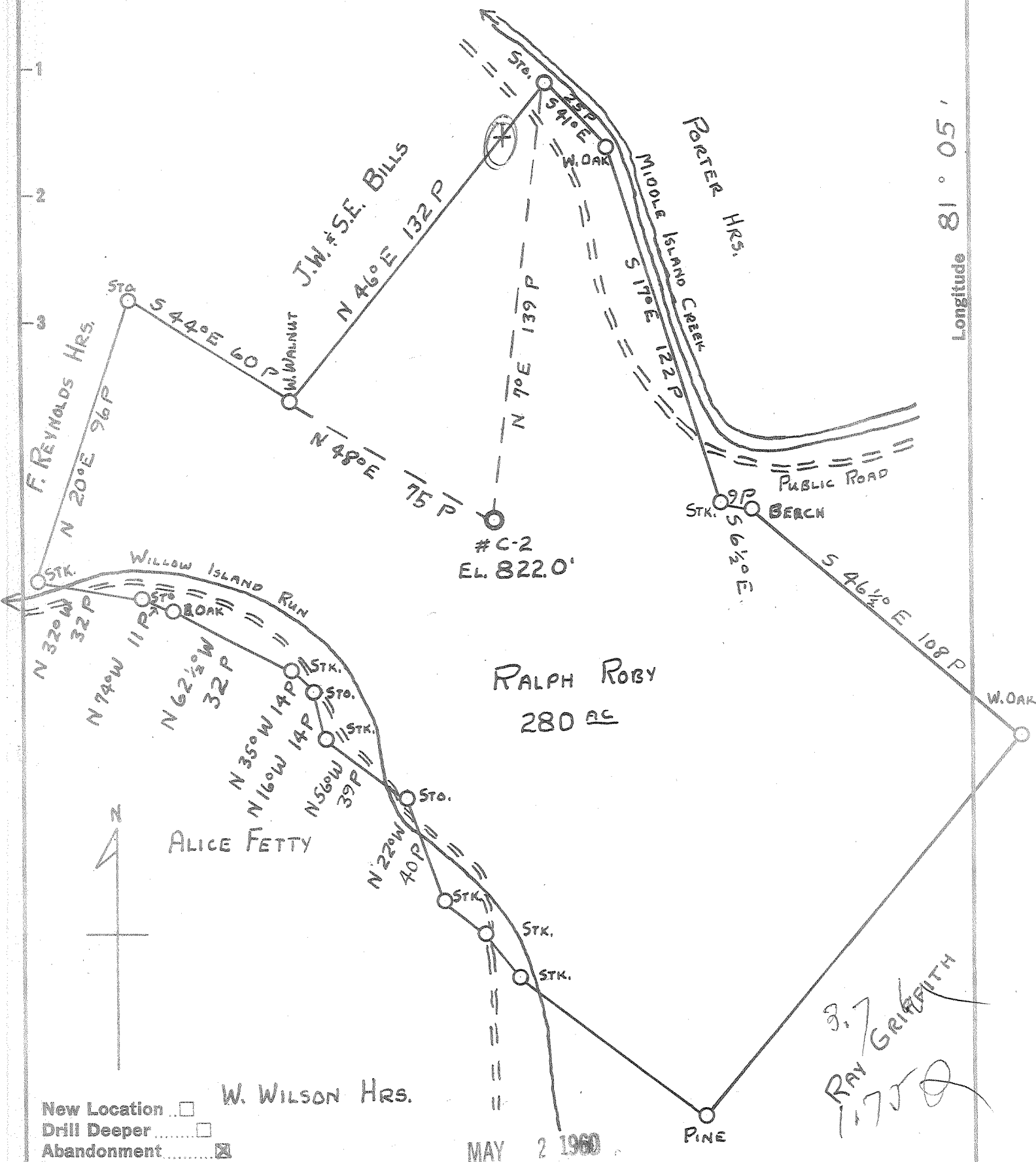


Latitude 39° 25'

Longitude 81° 05'



New Location   
 Drill Deeper   
 Abandonment

W. WILSON HRS.

MAY 2 1960

PINE

Company HART & HAMILTON  
 Address Box 26 ST. MARYS, W. VA.  
 Farm RALPH ROBY  
 Tract \_\_\_\_\_ Acres 280 Lease No. \_\_\_\_\_  
 Well (Farm) No. C-2 Serial No. 77  
 Elevation (Spirit Level) 822.0'  
 Quadrangle ST. MARYS  
 County PLEASANTS District MCKIM  
 Engineer JOHN W. HAMILTON  
 Engineer's Registration No. 2274  
 File No. \_\_\_\_\_ Drawing No. \_\_\_\_\_  
 Date 3-28-60 Scale 1" = 40 P

STATE OF WEST VIRGINIA  
 DEPARTMENT OF MINES  
 OIL AND GAS DIVISION  
 CHARLESTON

**WELL LOCATION MAP**  
 FILE NO. PLEAS-788-A

+ Denotes location of well on United States Topographic Maps, scale 1 to 62,500, latitude and longitude lines being represented by border lines as shown.

- Denotes one inch spaces on border line of original tracing.

RALPH ROBY No-C-2(77) - HART & HAMILTON - PLEAS-788-A