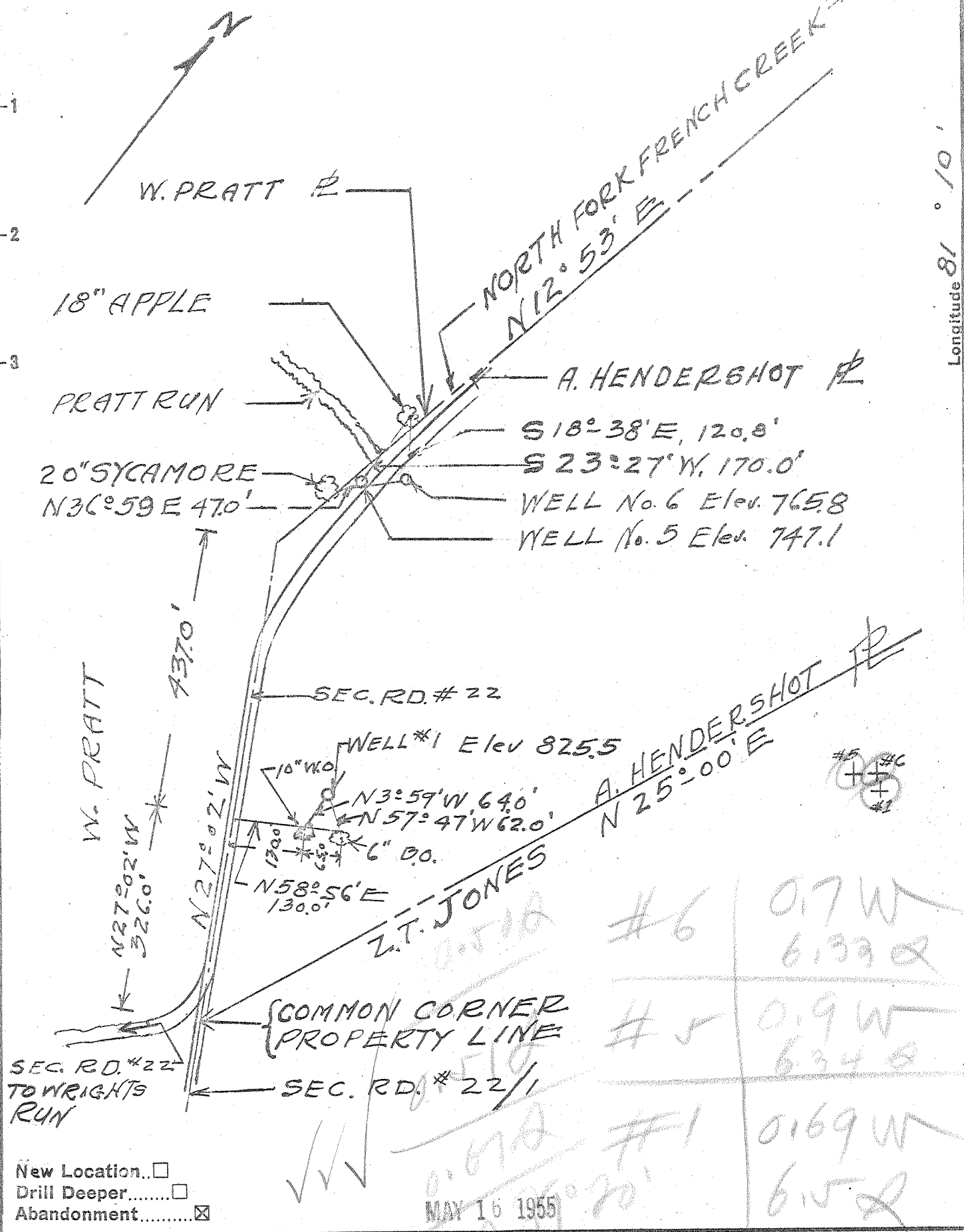


Latitude 39° 25'

Longitude 81° 10'



New Location...   
 Drill Deeper.....   
 Abandonment.....

MAY 16 1955

Company DAVID WEINER  
 Address 1108 N. HIGHLAND AVE., PITTSBURGH, Pa.  
 Farm A. HENDERSHOT  
 Tract \_\_\_\_\_ Acres 75 Lease No. \_\_\_\_\_  
 Well (Farm) No. 4, 5 & 6 Serial No. 501  
 Elevation (Spirit Level) SEE PLAT  
 Quadrangle ST. MARYS  
 County PLEASANTS District JEFFERSON  
 Engineer E.M. Collier  
 Engineer's Registration No. 889  
 File No. \_\_\_\_\_ Drawing No. \_\_\_\_\_  
 Date 4-19-55 Scale 1"=200'

STATE OF WEST VIRGINIA  
 DEPARTMENT OF MINES  
 OIL AND GAS DIVISION  
 CHARLESTON

WELL LOCATION MAP  
 FILE NO. PLEAS-684-A-#6  
PLEAS-685-R-#5  
PLEAS-686-A-#1

+ Denotes location of well on United States Topographic Maps, scale 1 to 62,500, latitude and longitude lines being represented by border lines as shown.

- Denotes one inch spaces on border line of original tracing.

A. HENDERSHOT NOS. 6, 5, & 1 - DAVID WEINER - PLEAS-684-5-6-A



STATE OF WEST VIRGINIA  
DEPARTMENT OF MINES  
OIL AND GAS DIVISION

192

Quadrangle \_\_\_\_\_

Permit No. \_\_\_\_\_

# WELL RECORD

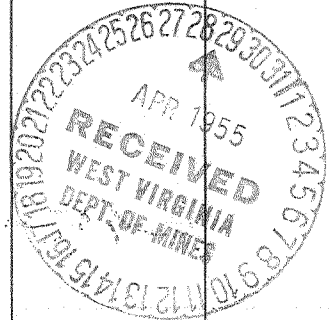
Oil or Gas Well \_\_\_\_\_  
(KIND)

Company David Weiner  
 Address 1108 N. Highland Ave.  
Pittsburgh, Pa.  
 Farm A. Hendershot Acres 75  
 Location (waters) \_\_\_\_\_  
 Well No. 6 Elev. 765.8  
 District Jefferson County Pleasants  
 The surface of tract is owned in fee by A. Hendershot  
 Address \_\_\_\_\_  
 Mineral rights are owned by \_\_\_\_\_  
 Address \_\_\_\_\_  
 Drilling commenced \_\_\_\_\_  
 Drilling completed \_\_\_\_\_  
 Date Shot \_\_\_\_\_ From \_\_\_\_\_ To \_\_\_\_\_  
 With \_\_\_\_\_  
 Open Flow \_\_\_\_\_ /10ths Water in \_\_\_\_\_ Inch  
 \_\_\_\_\_ /10ths Merc. in \_\_\_\_\_ Inch  
 Volume \_\_\_\_\_ Cu. Ft.  
 Rock Pressure \_\_\_\_\_ lbs. \_\_\_\_\_ hrs.  
 Oil \_\_\_\_\_ bbls., 1st 24 hrs.  
 Fresh water \_\_\_\_\_ feet \_\_\_\_\_ feet  
 Salt water \_\_\_\_\_ feet \_\_\_\_\_ feet

Casing and Tubing	Used in Drilling	Left in Well	Packers
Size			
16			Kind of Packer _____
13			
10			Size of _____
8 1/4		680	Depth set _____
4-7/8			
5 3/16			
3			Perf. top _____
2			Perf. bottom _____
Liners Used			Perf. top _____
			Perf. bottom _____

CASING CEMENTED \_\_\_\_\_ SIZE \_\_\_\_\_ No. Ft. \_\_\_\_\_ Date \_\_\_\_\_  
 COAL WAS ENCOUNTERED AT \_\_\_\_\_ FEET \_\_\_\_\_ INCHES  
 \_\_\_\_\_ FEET \_\_\_\_\_ INCHES FEET \_\_\_\_\_ INCHES  
 \_\_\_\_\_ FEET \_\_\_\_\_ INCHES FEET \_\_\_\_\_ INCHES

Formation	Color	Hard or Soft	Top	Bottom	Oil, Gas or Water	Depth Found	Remarks
Cow Run			710	730			
Total Depth				730			



AUG 12 1955

