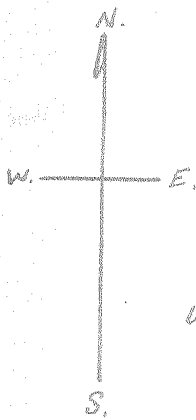
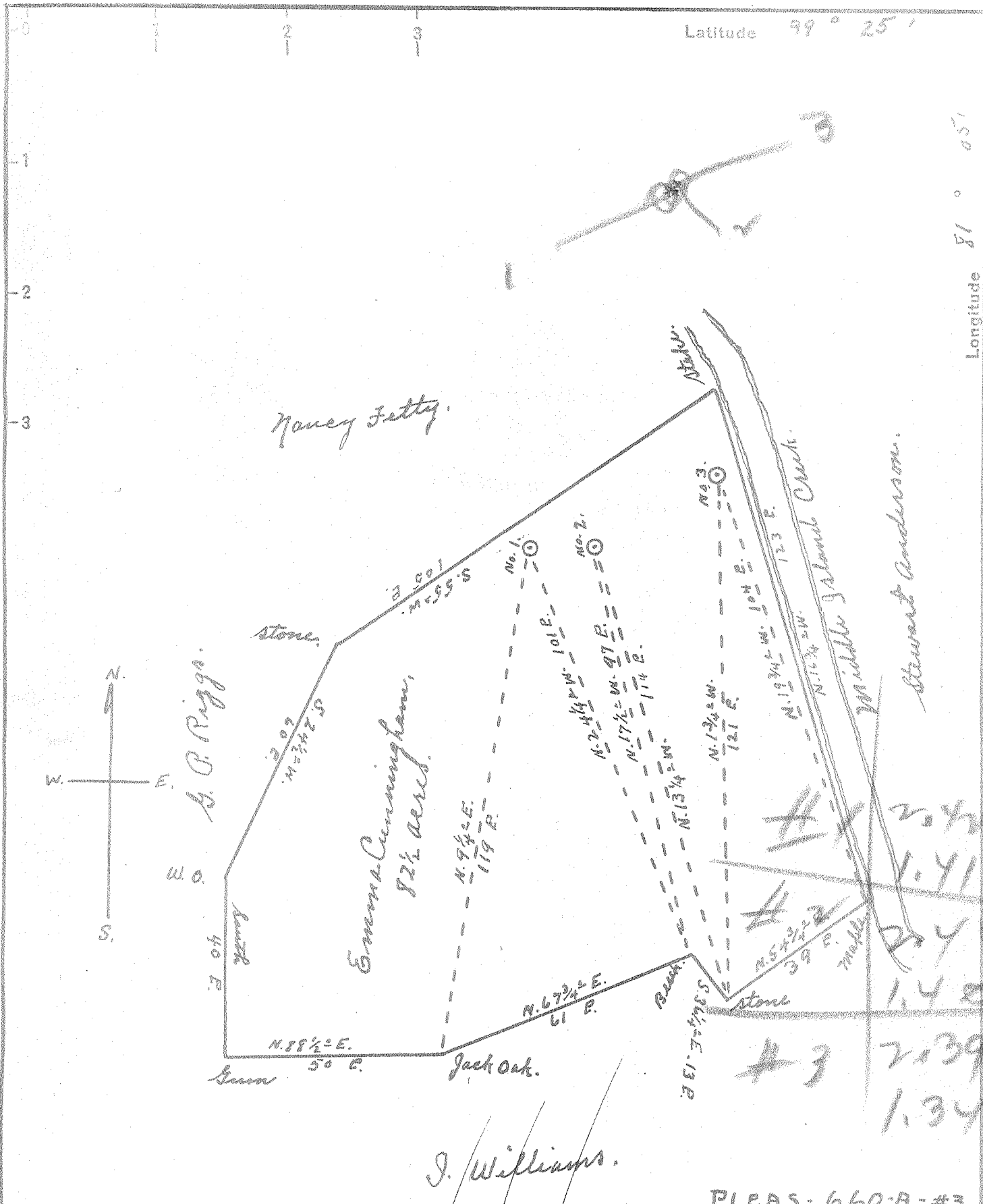


Latitude 39° 25'

Longitude 81° 05'



A. B. Riggs.

Nancy Fetty.

Emma Cunningham, 82 1/2 acres.

Middle Island Creek  
Stewart Anderson.

J. Williams.

PLEAS-660-A-#3  
PLEAS-661-A-#2  
PLEAS-662-A-#1

New Location -   
Drift Deeper -   
Abandonment -

OCT 11 1954

Company	Patterson and Ginn
Address	Route 5, Marietta Ohio
Farm	Emma Cunningham
Tract	Acres 82 1/2 Lease No.
Well (Farm) No.	1, 2, 3. Serial No.
Elevation (Spirit Level)	No. 1, 760', No. 2, 720', No. 3, 720'
Quadrangle	St. Marys
County	Pleasants District McKim
Engineer	Robert R. Anderson
By	John Triplett, Surveyor.
Engineer's Registration No.	296
File No.	Drawing No.
Date	Sept. 23, 1954 Scale 1" = 30 F.

STATE OF WEST VIRGINIA  
DEPARTMENT OF MINES  
OIL AND GAS DIVISION  
CHARLESTON

### WELL LOCATION MAP

FILE NO. SEE ABOVE

+ Denotes location of well on United States Topographic Maps, scale 1 to 62,500, latitude and longitude lines being represented by border lines as shown.  
- Denotes one inch space on border line of original tracing.

EMMA CUNNINGHAM Nos. 1, 2, 23 - PATTERSON & ZINN - 660-1-2A