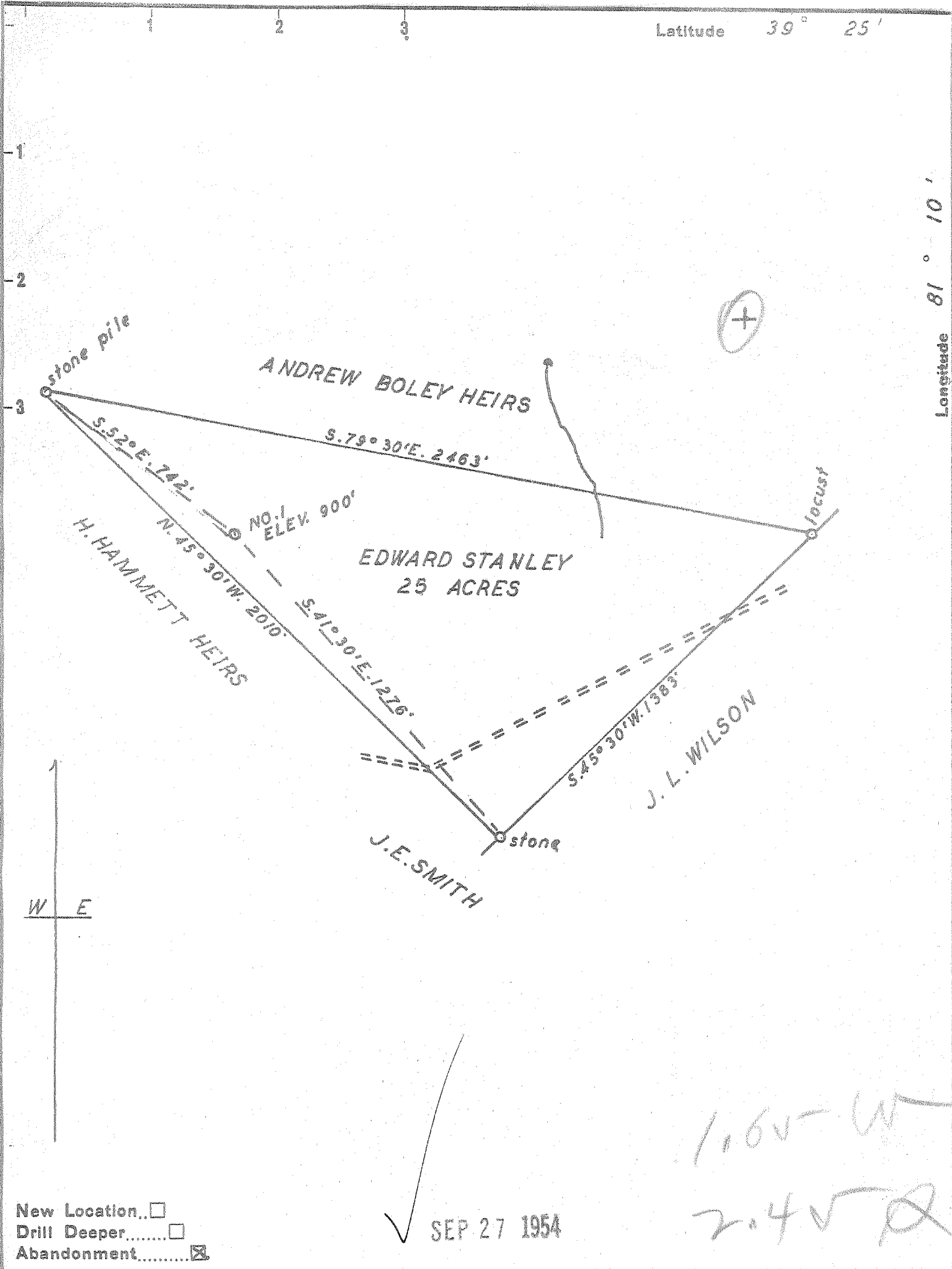


Latitude 39° 25'

Longitude 81° 10'



New Location...   
 Drill Deeper.....   
 Abandonment.....

Company PATTERSON & ZINN  
 Address RT. 5 MARIETTA OHIO  
 Farm EDWARD STANLEY  
 Tract \_\_\_\_\_ Acres 25 Lease No. \_\_\_\_\_  
 Well (Farm) No. 1 Serial No. \_\_\_\_\_  
 Elevation (Spirit Level) 900'  
 Quadrangle ST. MARYS  
 County PLEASANTS District WASHINGTON  
 Engineer George R. Lelanche  
 Surveyed by Homer W. Myers  
 Engineer's Registration No. 102  
 File No. \_\_\_\_\_ Drawing No. \_\_\_\_\_  
 Date SEPT. 10. 1954 Scale 1" = 400'

STATE OF WEST VIRGINIA  
 DEPARTMENT OF MINES  
 OIL AND GAS DIVISION  
 CHARLESTON

**WELL LOCATION MAP**  
 FILE NO. PLEAS-650-A

+ Denotes location of well on United States Topographic Maps, scale 1 to 62,500, latitude and longitude lines being represented by border lines as shown.  
 - Denotes one inch spaces on border line of original tracing.

EDWARD STANLEY No. 1 - PATTERSON & ZINN - PLEAS-650-A