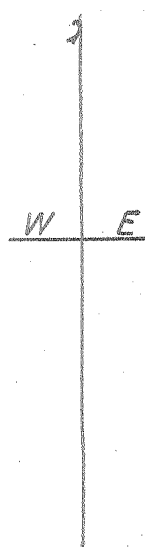
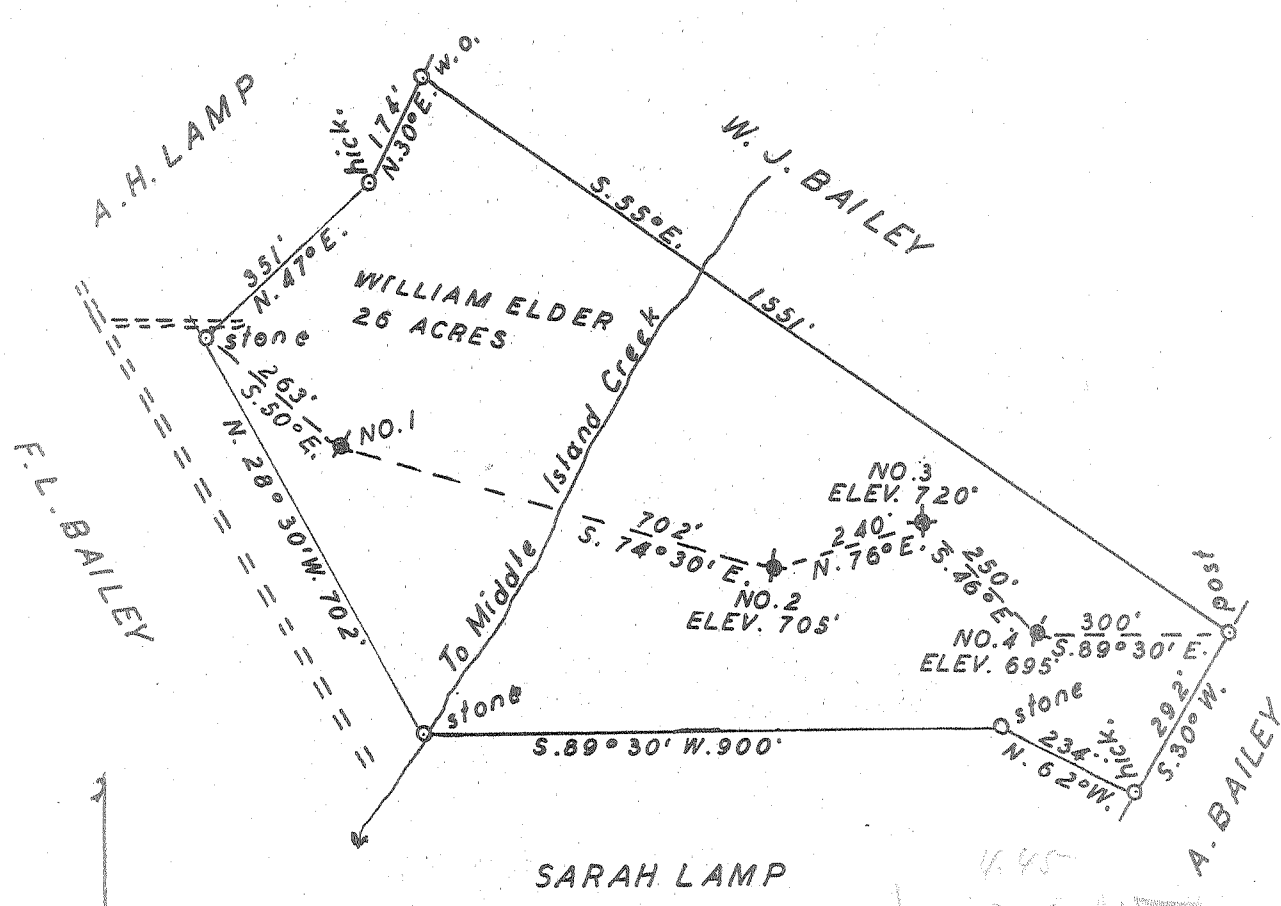


Latitude 9° 25'

Longitude 81° 05'



New Location   
 Drill Deeper   
 Abandonment

MAY 31 1954

Handwritten notes and a table:

#2	1.12
#3	1.08
#4	1.07

PLEAS-635-A-#2  
 PLEAS-636-A-#3  
 PLEAS-637-A-#4

Company PATTERSON & ZINN  
 Address RT. 5. MARIETTA. OHIO  
 Farm WILLIAM ELDER  
 Tract \_\_\_\_\_ Acres 26 Lease No. \_\_\_\_\_  
 Well (Farm) No. 2-3-4 Serial No. \_\_\_\_\_  
 Elevation (Spirit Level) NO. 2. 705'. NO. 3. 720'. NO. 4. 695'  
 Quadrangle ST. MARYS  
 County PLEASANTS District UNION  
 Engineer George R. Clarke  
 Surveyed by Homer W. Myers 102  
 Engineer's Registration No. \_\_\_\_\_  
 File No. \_\_\_\_\_ Drawing No. 2  
 Date 4-9-1954 Scale 1" = 300'

STATE OF WEST VIRGINIA  
 DEPARTMENT OF MINES  
 OIL AND GAS DIVISION  
 CHARLESTON

**WELL LOCATION MAP**  
 FILE NO. See Above

+ Denotes location of well on United States Topographic Maps, scale 1 to 62,500, latitude and longitude lines being represented by border lines as shown.  
 - Denotes one inch spaces on border line of original tracing.

WILLIAM ELDER nos. 2, 3, & 4 - PATTERSON & ZINN - 635-6-7-A



STATE OF WEST VIRGINIA  
DEPARTMENT OF MINES  
OIL AND GAS DIVISION

189

Quadrangle St. Marys

WELL RECORD

Permit No. 21225-635

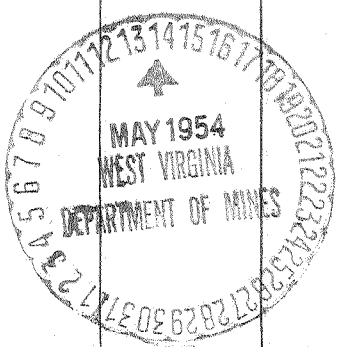
Oil or Gas Well oil  
(KIND)

Company Patterson & Zinn  
Address Route #5, Marietta, Ohio  
Farm William Elder Acres 26  
Location (waters) Middle Island Creek  
Well No. 2 Elev. 705'  
District Union County Pleasants  
The surface of tract is owned in fee by William Elder  
Address St. Marys, W. Va.  
Mineral rights are owned by Same party  
Address \_\_\_\_\_  
Drilling commenced No records  
Drilling completed ditto  
Date Shot ditto From \_\_\_\_\_ To \_\_\_\_\_  
With No records  
Open Flow /10ths Water in no records Inch  
/10ths Merc. in Inch  
Volume no records Cu. Ft.  
Rock Pressure no records lbs. hrs.  
Oil no records bbls., 1st 24 hrs.  
Fresh water no records feet  
Salt water no records feet

Casing and Tubing	Used in Drilling	Left in Well	Packers
Size			
16			Kind of Packer
13			
10			Size of
8 3/4			
6 3/4	<u>600'</u>	<u>600'</u>	Depth set
5 3/16			
3			Perf. top
2			Perf. bottom
Liners Used			Perf. top
			Perf. bottom

CASING CEMENTED \_\_\_\_\_ SIZE \_\_\_\_\_ No. Ft. \_\_\_\_\_ Date \_\_\_\_\_  
No records  
COAL WAS ENCOUNTERED AT \_\_\_\_\_ FEET \_\_\_\_\_ INCHES  
\_\_\_\_\_ FEET \_\_\_\_\_ INCHES FEET \_\_\_\_\_ INCHES  
\_\_\_\_\_ FEET \_\_\_\_\_ INCHES FEET \_\_\_\_\_ INCHES

Formation	Color	Hard or Soft	Top	Bottom	Oil, Gas or Water	Depth Found	Remarks
Sand			629'	649'	oil	629'	Cow Run Total depth 629'



AUG 12 1955

