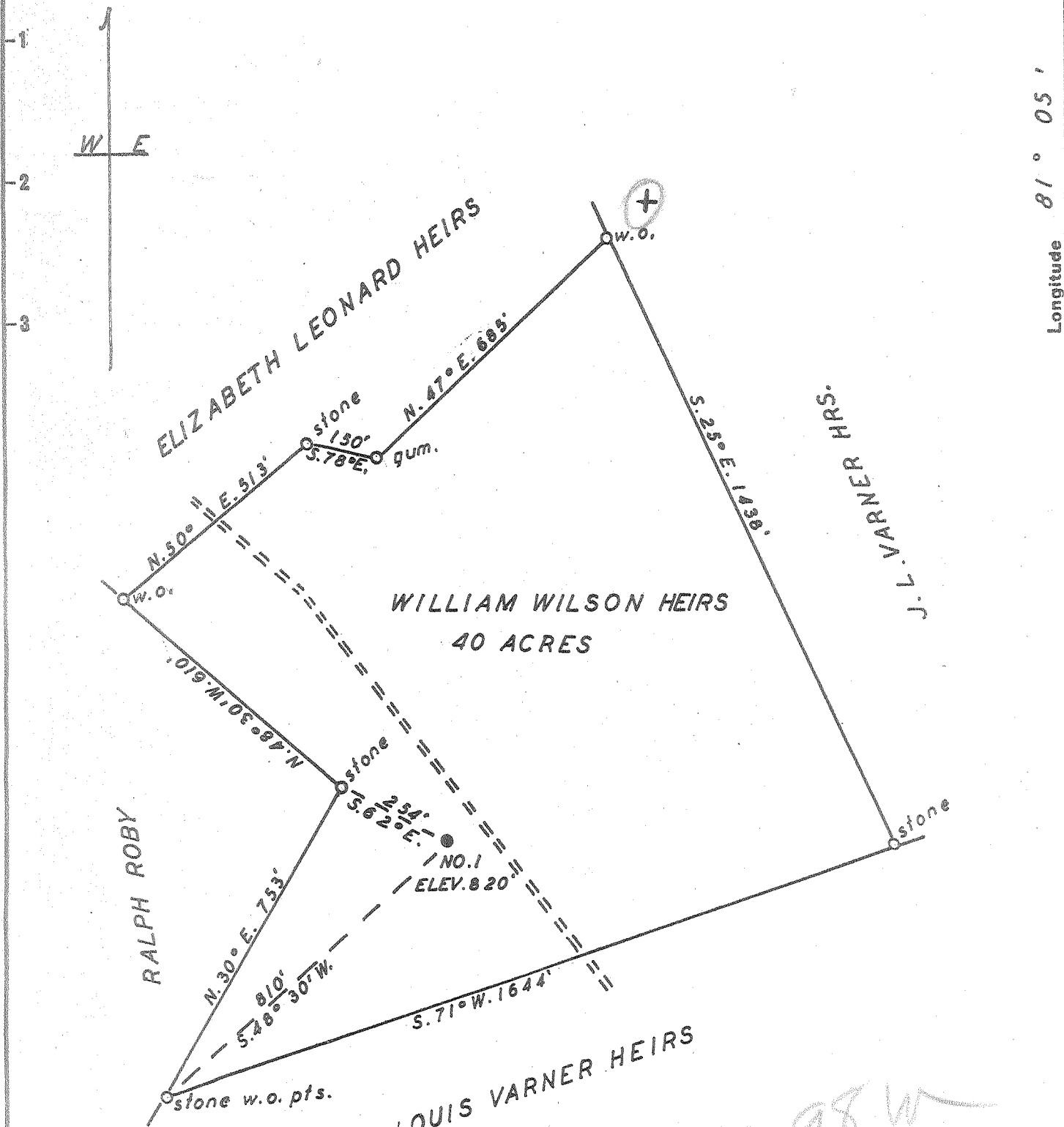


Latitude 39° 25'

Longitude 81° 05'



New Location..

Drill Deeper.....

Abandonment.....

✓ MAY 31 1954

2198 W  
213

Company PATTERSON & ZINN

Address RT. 5. MARIETTA OHIO

Farm WILLIAM WILSON HEIRS

Tract \_\_\_\_\_ Acres 40 Lease No. 119

Well (Farm) No. 1 Serial No. \_\_\_\_\_

Elevation (Spirit Level) 820'

Quadrangle ST. MARYS

County PLEASANTS District MCKIM

Engineer George R. Clarke

Surveyed by Homer W. Myers

Engineer's Registration No. 102

File No. \_\_\_\_\_ Drawing No. 6

Date MAY 3, 1954 Scale 1" = 300'

STATE OF WEST VIRGINIA  
DEPARTMENT OF MINES  
OIL AND GAS DIVISION  
CHARLESTON

WELL LOCATION MAP  
FILE NO. PLEAS-632-A

+ Denotes location of well on United States Topographic Maps, scale 1 to 62,500, latitude and longitude lines being represented by border lines as shown.

- Denotes one inch spaces on border line of original tracing.

WILLIAM WILSON HEIRS NO. 1 - PATTERSON & ZINN - PLEAS-632A