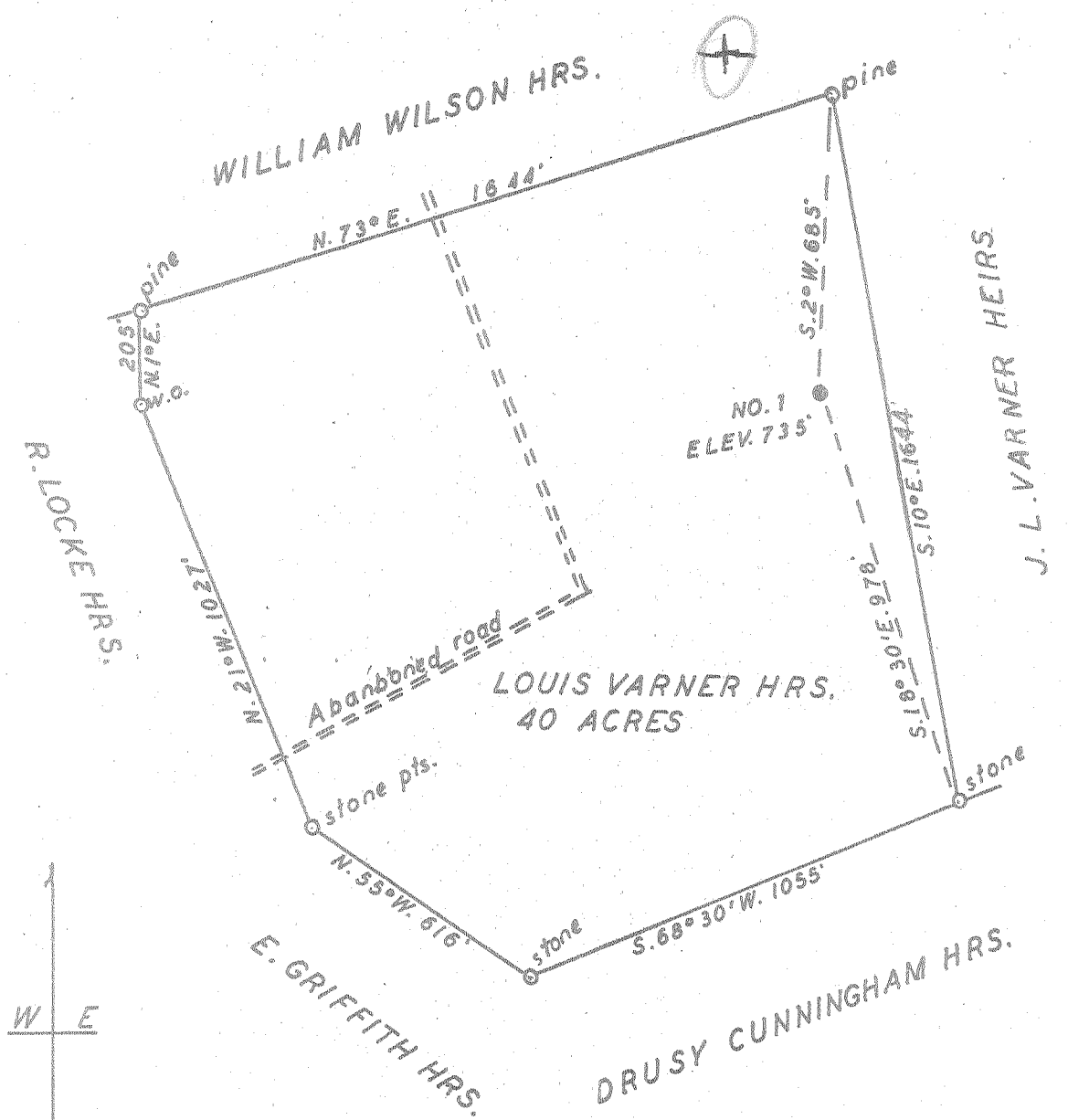


Latitude 39° 25'

Longitude 81° 05'



New Location...

Drill Deeper.....

Abandonment.....

MAY 24 1954

Company PATTERSON & ZINN

Address RT. 5. MARIETTA OHIO

Farm LOUIS VARNER HEIRS

Tract _____ Acres 40 Lease No. 118

Well (Farm) No. 1 Serial No. _____

Elevation (Spirit Level) 735'

Quadrangle ST. MARYS

County PLEASANTS District MCKIM

Engineer George R. Clarke No. 102

Surveyed by Homer W. Myers

Engineer's Registration No. _____

File No. _____ Drawing No. 7

Date MAY 6, 1954 Scale 1" = 400'

STATE OF WEST VIRGINIA
DEPARTMENT OF MINES
OIL AND GAS DIVISION
CHARLESTON

WELL LOCATION MAP
FILE NO. PLEAS-631-A

+ Denotes location of well on United States Topographic Maps, scale 1 to 62,500, latitude and longitude lines being represented by border lines as shown.

- Denotes one inch spaces on border line of original tracing.

LOUIS VARNER HEIRS (NO. 1) - PATTERSON & ZINN - PLEAS-631-A