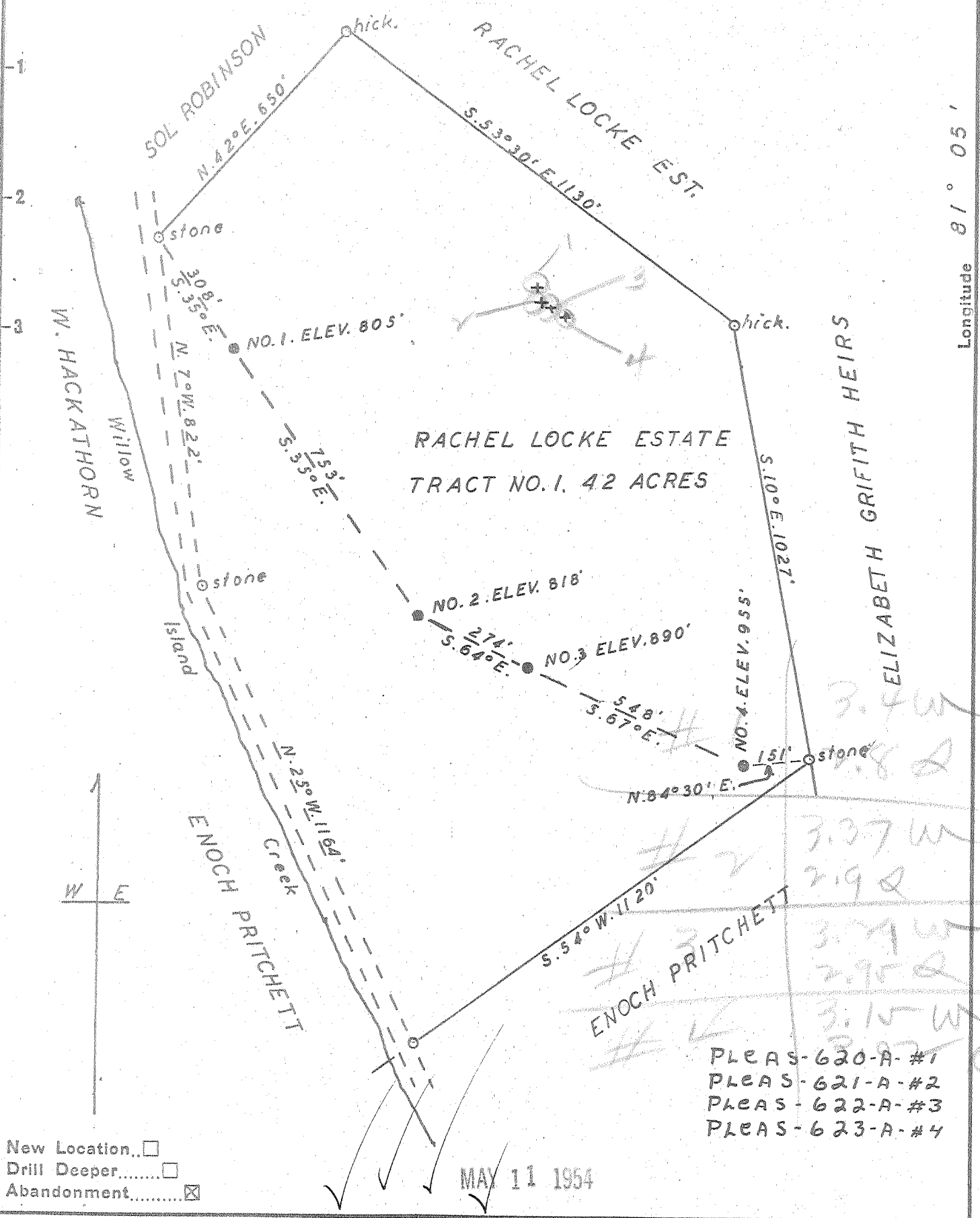


Latitude 39° 25'

Longitude 81° 05'



Company PATTERSON & ZINN
 Address RT. 5. MARIETTA OHIO
 Farm RACHEL LOCKE ESTATE
 Tract 1 Acres 42 Lease No. 117 A
 Well (Farm) No. 1-2-3-4 Serial No. NO. 1 NO. 2 NO. 3 NO. 4
 Elevation (Spirit Level) 805' 818' 890' 955'
 Quadrangle ST. MARYS
 County PLEASANTS District MCKIM
 Engineer George R. Clark
 Surveyed by Womer W. Myers
 Engineer's Registration No. 102
 File No. _____ Drawing No. 3
 Date 4-15-1954 Scale 1" = 300'

STATE OF WEST VIRGINIA
 DEPARTMENT OF MINES
 OIL AND GAS DIVISION
 CHARLESTON

WELL LOCATION MAP
 FILE NO. See Above

+ Denotes location of well on United States Topographic Maps, scale 1 to 62,500, latitude and longitude lines being represented by border lines as shown.
 — Denotes one inch spaced border line of original tracing.

RACHEL LOCKE ESTATE MS. 1, 2, 3 & 4 - PATTERSON & ZINN - PLEAS - 620-A-#1 - 621-A-#2 - 622-A-#3 - 623-A-#4