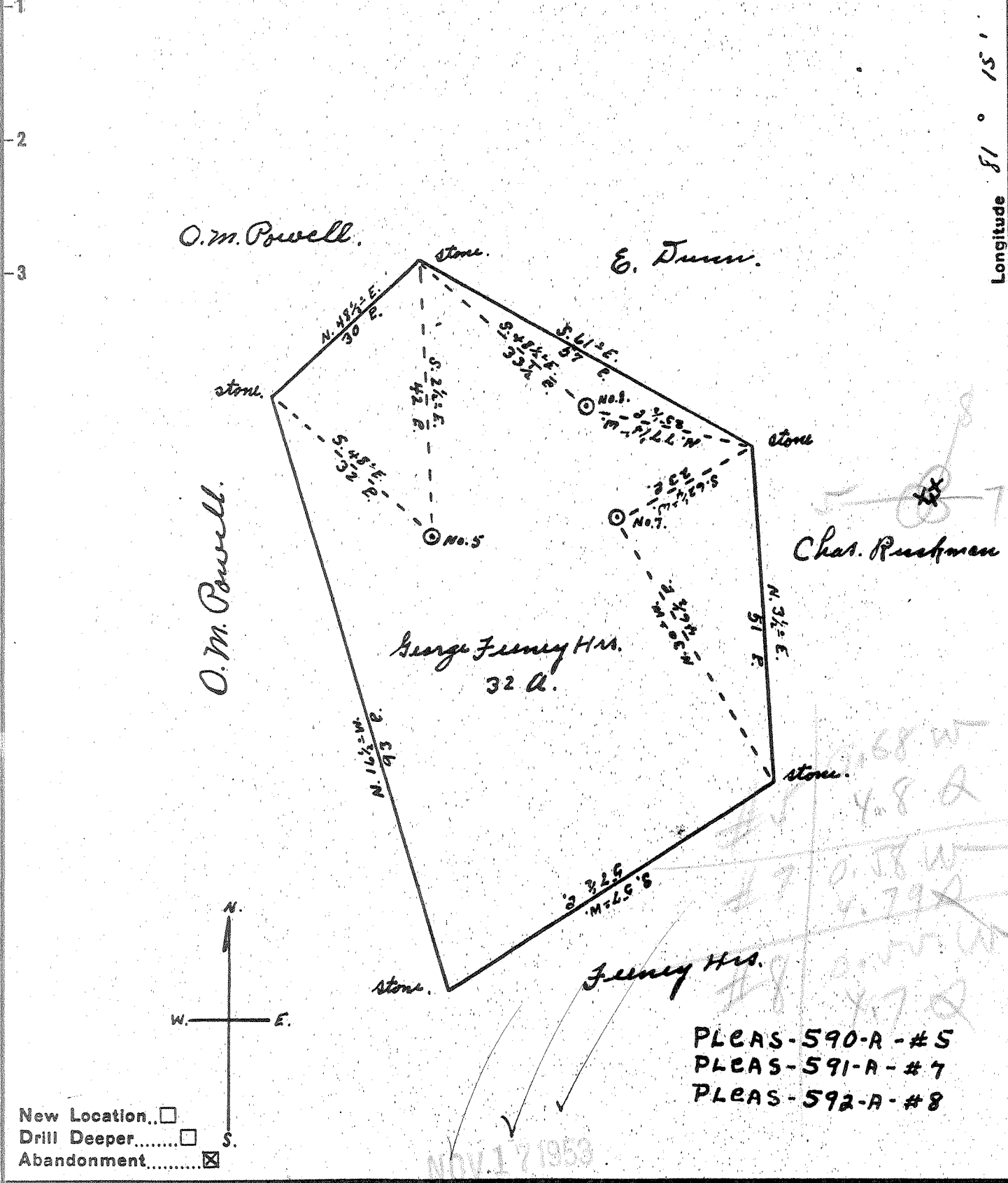


Latitude 7° 25'

Longitude 81° 15'



New Location...
 Drill Deeper.....
 Abandonment.....

Company Dinsmoor & Company
 Address St. Marys, W.Va.
 Farm George Feeney Hrs.
 Tract _____ Acres 32 Lease No. _____
 Well (Farm) No. 5, 7, 8 Serial No. _____
 Elevation (Spirit Level) No. 5, 900; No. 7, 726; No. 8, 880'
 Quadrangle Marietta
 County Pleasants District Jefferson
 Engineer Robert R. Anderson
 By Jno Triplett, Surveyor
 Engineer's Registration No. 296
 File No. _____ Drawing No. _____
 Date Oct. 29, 1953 Scale 1" = 20 P.

STATE OF WEST VIRGINIA
 DEPARTMENT OF MINES
 OIL AND GAS DIVISION
 CHARLESTON

WELL LOCATION MAP
 FILE NO. SEE ABOVE

+ Denotes location of well on United States Topographic Maps, scale 1 to 62,500, latitude and longitude lines being represented by border lines as shown.
 - Denotes one inch spaces on border line of original tracing.

GEORGE FEENEY HEIRS JWS, 728 - DINSMOOR & CO, - PLEAS-590-1-2A