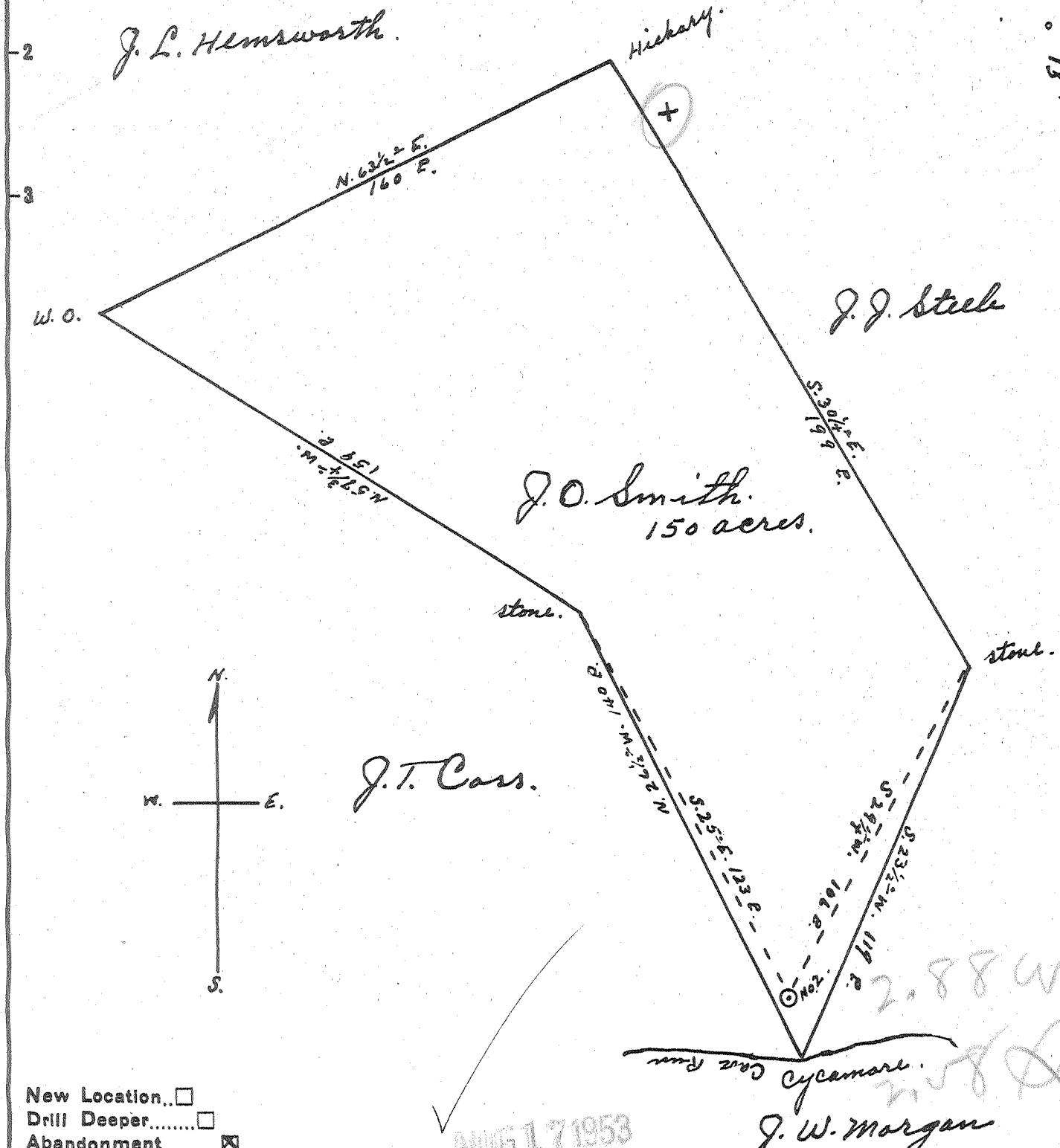


Latitude 39° 25'

Longitude 81° 00'



New Location...
 Drill Deeper.....
 Abandonment.....

AUG 17 1953

Company St. Marys Pipe & Supply Co.
 Address St. Marys, W.Va.
 Farm J. O. Smith (F.M. MORGAN)
 Tract _____ Acres 150, Lease No. _____
 Well (Farm) No. 2, Serial No. _____
 Elevation (Spirit Level) 820'
 Quadrangle St. Marys
 County Pleasants District Lafayette
 Engineer Robert R. Anderson
By Jno Triplett, Surveyor
 Engineer's Registration No. 296
 File No. _____ Drawing No. _____
 Date July 28 1953 Scale 1" = 40 P.

STATE OF WEST VIRGINIA
 DEPARTMENT OF MINES
 OIL AND GAS DIVISION
 CHARLESTON

WELL LOCATION MAP
 FILE NO. PLEAS-576-A

+ Denotes location of well on United States Topographic Maps, scale 1 to 62,500, latitude and longitude lines being represented by border lines as shown.
 - Denotes one inch spaces on border line of original tracing.

J.O. SMITH (F.M. MORGAN) NO. 2 - ST. MARYS PIPE & SUPPLY CO. - PLEAS-576-A