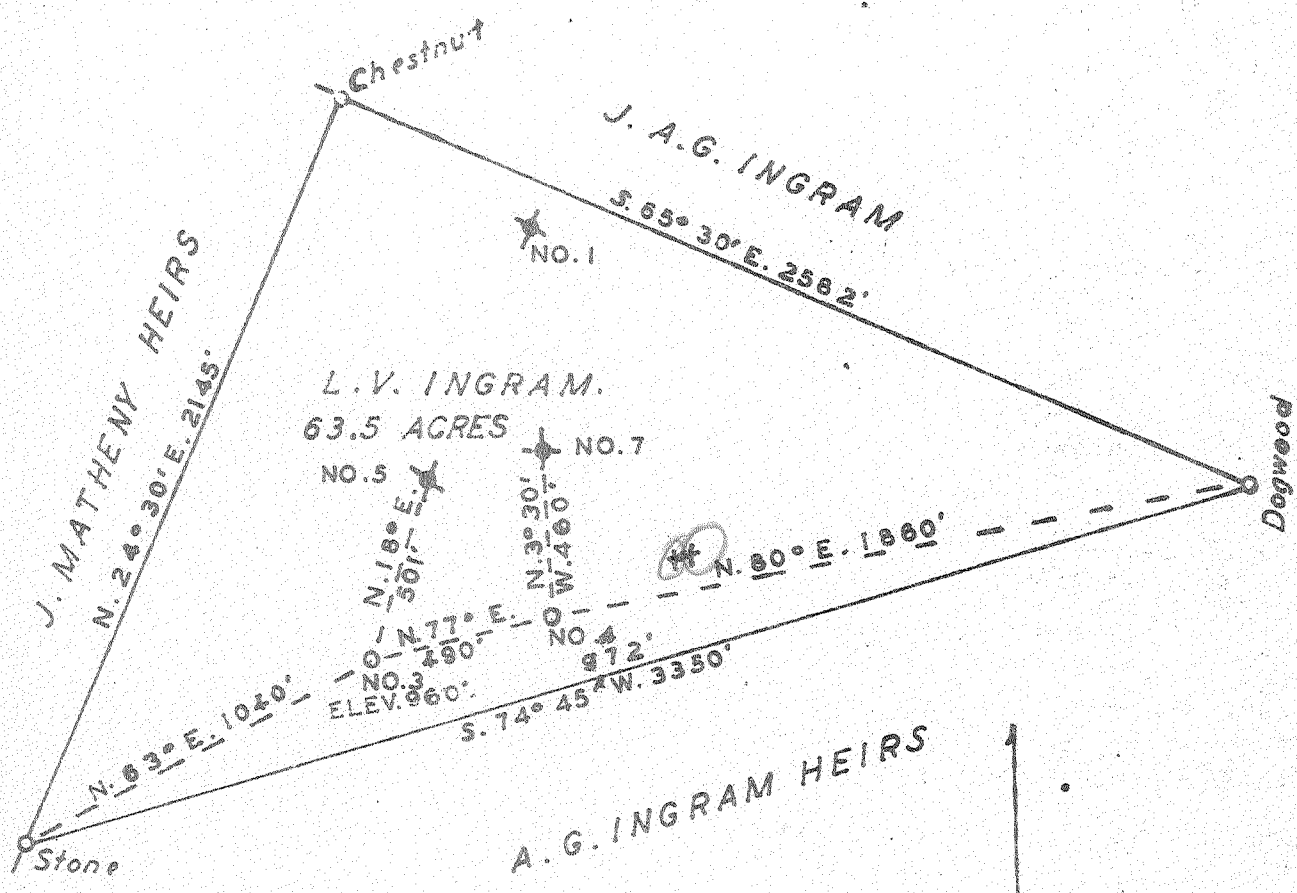


Latitude 39° 25'

Longitude 81° 10'



New Location

Drill Deeper

Abandonment

#3 (3x3 W) ✓

#4 (3x3 W) ✓

FEB 1 1953

Company PATTERSON & ZINN

Address RT. 5. MARIETTA OHIO

Farm L. V. INGRAM

Tract \_\_\_\_\_ Acres 63.5 Lease No. \_\_\_\_\_

Well (Farm) No. 3 & 4 Serial No. \_\_\_\_\_

Elevation (Spirit Level) NO. 3. 960' NO. 4. 972'

Quadrangle S. T. MARYS

County PLEASANT District JEFFERSON

Engineer George R. Clarke

Surveyed by Homer W. Myers 102

Engineer's Registration No. \_\_\_\_\_

File No. \_\_\_\_\_ Drawing No. \_\_\_\_\_

Date JAN. 5. 1953 Scale 1" = 500'

STATE OF WEST VIRGINIA  
DEPARTMENT OF MINES  
OIL AND GAS DIVISION  
CHARLESTON

WELL LOCATION MAP  
FILE NO. PLEAS-558-A-#4  
PLEAS-559-A-#3

+ Denotes location of well on United States Topographic Maps, scale 1 to 62,500, latitude and longitude lines being represented by border lines as shown.

- Denotes one inch spaces on border line of original tracing.

L.V. INGRAM MS. 3 & 4 - PATTERSON & ZINN - PLEAS-558-9-A