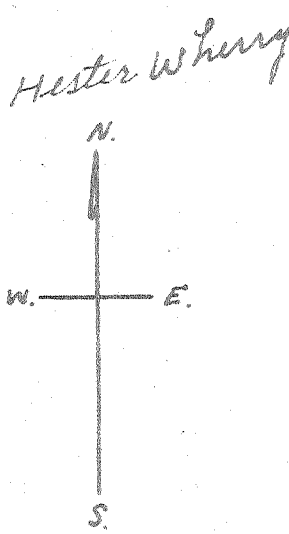
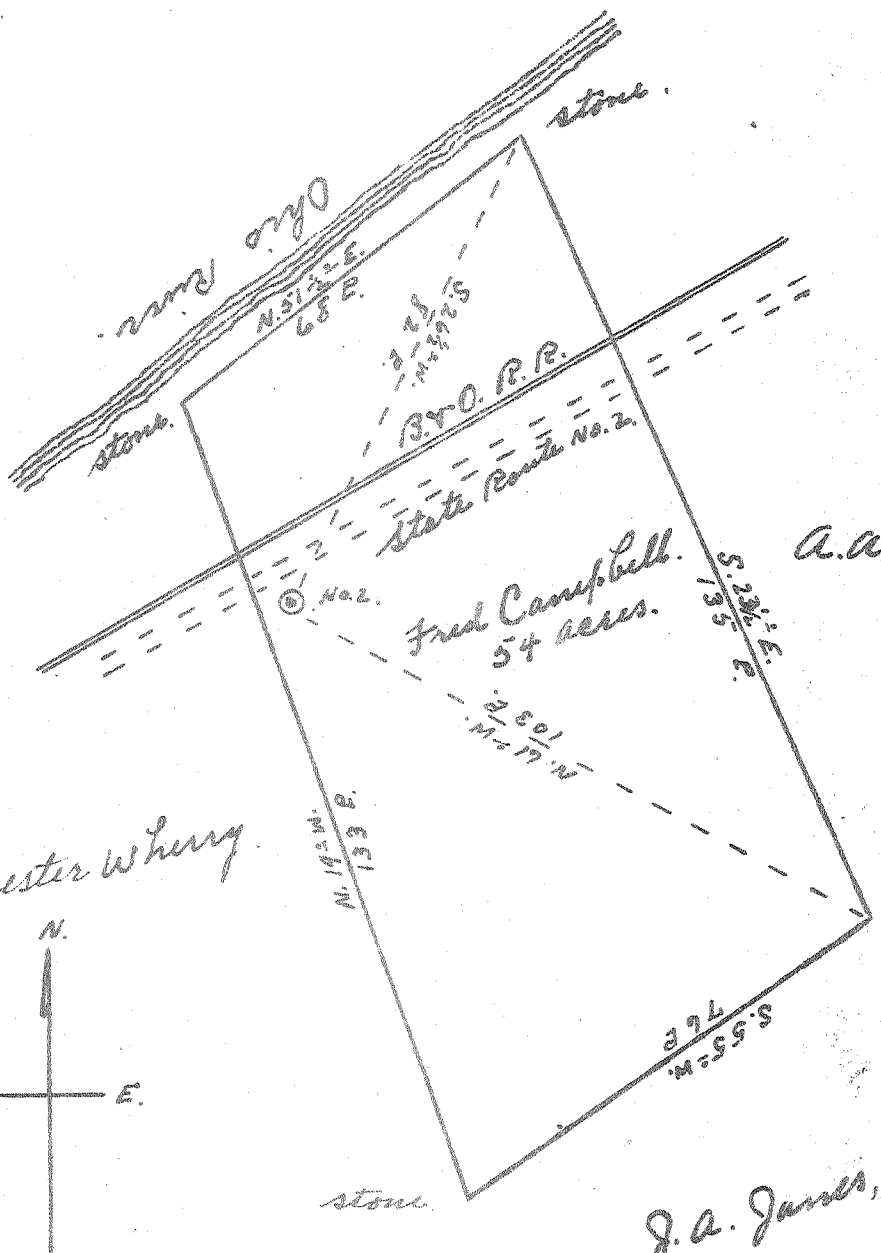


Latitude 39 ° 25'

Longitude 81 ° 20'



A.A. Adams, Hrs.

J.A. James, Est.

0.6 W  
 5.12 W

New Location   
 Drill Deeper   
 Abandonment

FEB 1 1953

Company Reno Oil Company  
 Address Sistersville W. Va.  
 Farm Fred Campbell  
 Tract \_\_\_\_\_ Acres 54 Lease No. \_\_\_\_\_  
 Well (Farm) No. 2 Serial No. \_\_\_\_\_  
 Elevation (Spirit Level) No. 2, 632'  
 Quadrangle Marietta  
 County Pleasants District Grant  
 Engineer Robert K. Anderson  
 By Jno Triplett, Surveyor  
 Engineer's Registration No. 296  
 File No. \_\_\_\_\_ Drawing No. \_\_\_\_\_  
 Date Dec. 18 1952 Scale 1" = 30 P.

STATE OF WEST VIRGINIA  
 DEPARTMENT OF MINES  
 OIL AND GAS DIVISION  
 CHARLESTON

WELL LOCATION MAP  
 FILE NO. PLEAS-557-A

✦ Denotes location of well on United States Topographic Maps, scale 1 to 62,500, latitude and longitude lines being represented by border lines as shown.  
 — Denotes one inch spaces on border line of original tracing.