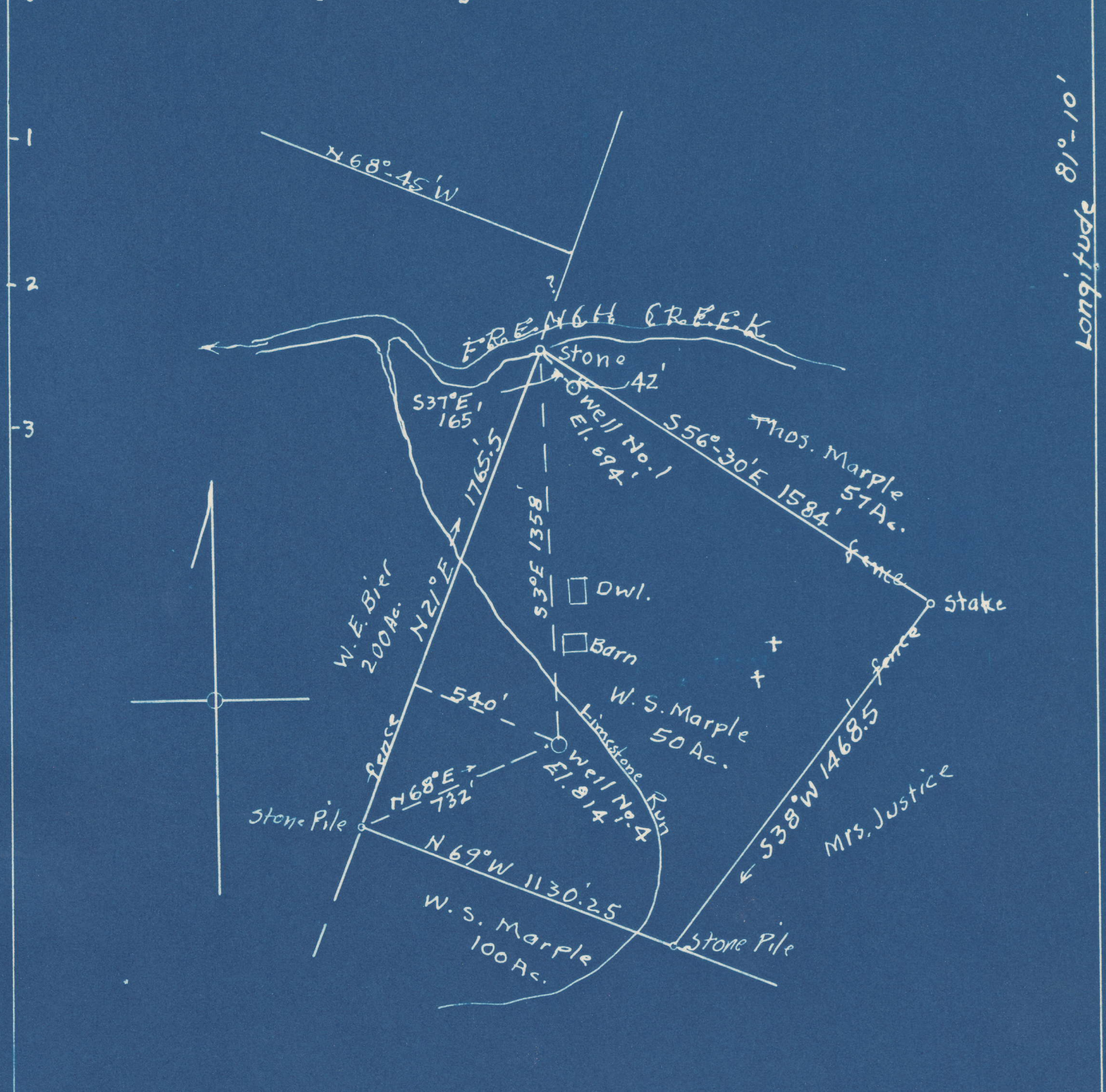


Latitude 39°-25'



Longitude 81°-10'

#1	4.65	S
	2.23	W
#4	4.88	S
	2.36	W

Abandonment

COMPANY: Dinsmoor & Co.  
 ADDRESS: St. Marys W. Va.  
 FARM: W.S. Marple  
 TRACT: ACRES: 50 LEASE NO.  
 WELL (Farm) NO. 1 & 4 SERIAL NO.  
 ELEVATION: No. 1 = 694; No. 4 = 814  
 QUADRANGLE: St. Marys  
 COUNTY: Pleasants DISTRICT: Jefferson  
 ENGINEER: George R. Clarke  
 ENGINEER'S REGISTRATION NO. 102  
 FILE NO. DRAWING NO.  
 DATE: NOV. 9, 1948 SCALE: 1" = 500'

WG

WELL ABANDONMENT MAP

FILE NO. PLEAS-302-A-#1  
 PLEAS-303-A-#4