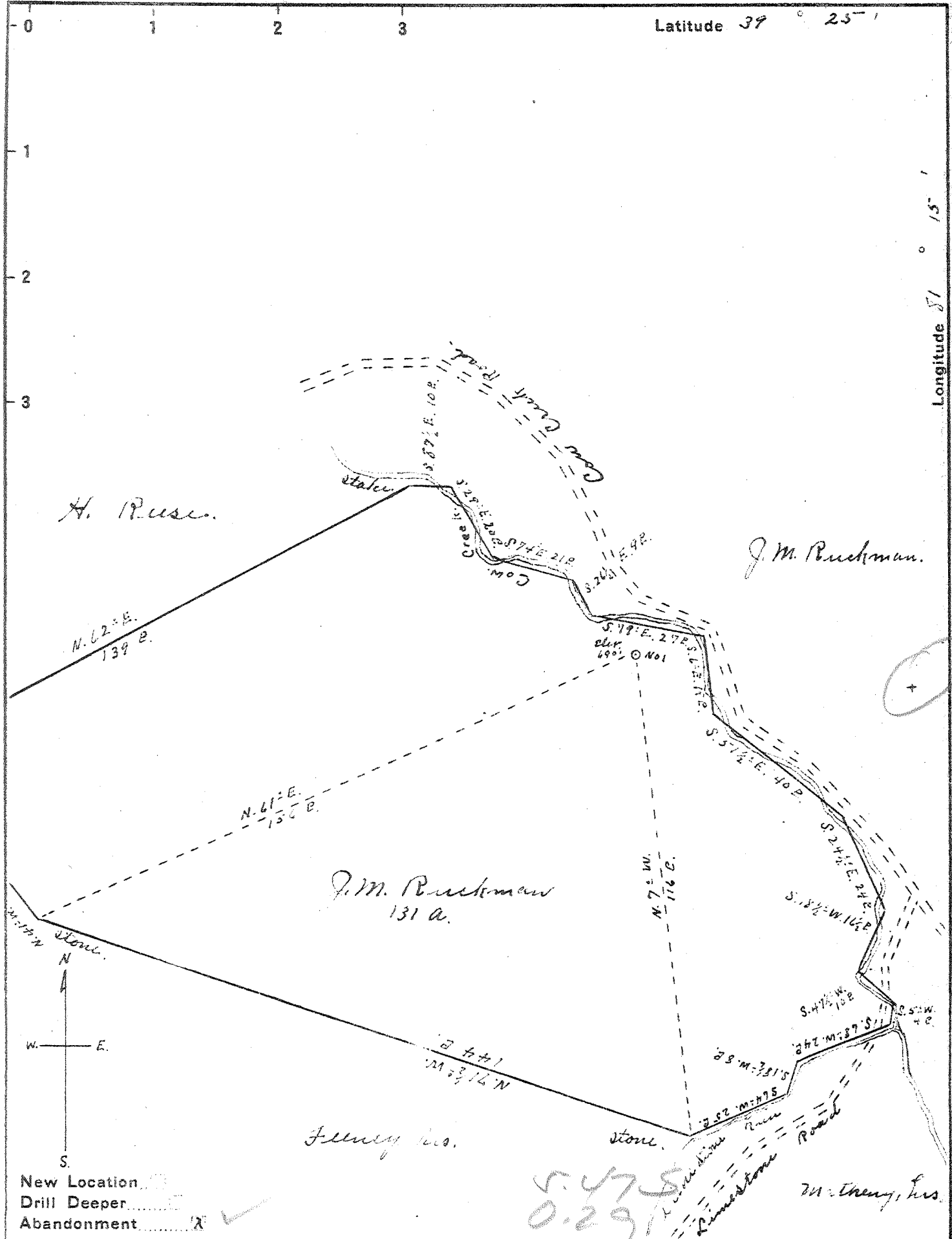


Latitude 37° 25'

Longitude 81° 15'



Company Irwin Cooper  
 Address St. Marys W.Va.  
 Farm J.M. Puckman  
 Tract \_\_\_\_\_ Acres 131 Lease No. \_\_\_\_\_  
 Well (Farm) No. 1 Serial No. \_\_\_\_\_  
 Elevation (Spirit Level) 690'  
 Quadrangle Marietta O.  
 County Pleasants District Jefferson  
 Engineer Ino Tripitt  
 Engineer's Registration No. \_\_\_\_\_  
 File No. \_\_\_\_\_ Drawing No. \_\_\_\_\_  
 Date Oct. 26, 1941 Scale 30' = 1"

STATE OF WEST VIRGINIA  
 DEPARTMENT OF MINES  
 OIL AND GAS DIVISION  
 CHARLESTON

WELL LOCATION MAP  
 FILE NO. PLEAS-171A

+ Denotes location of well on United States Topographic Maps, scale 1 to 62,500, latitude and longitude lines being represented by border lines as shown.  
 - Denotes one inch spaces on border line of original tracing.