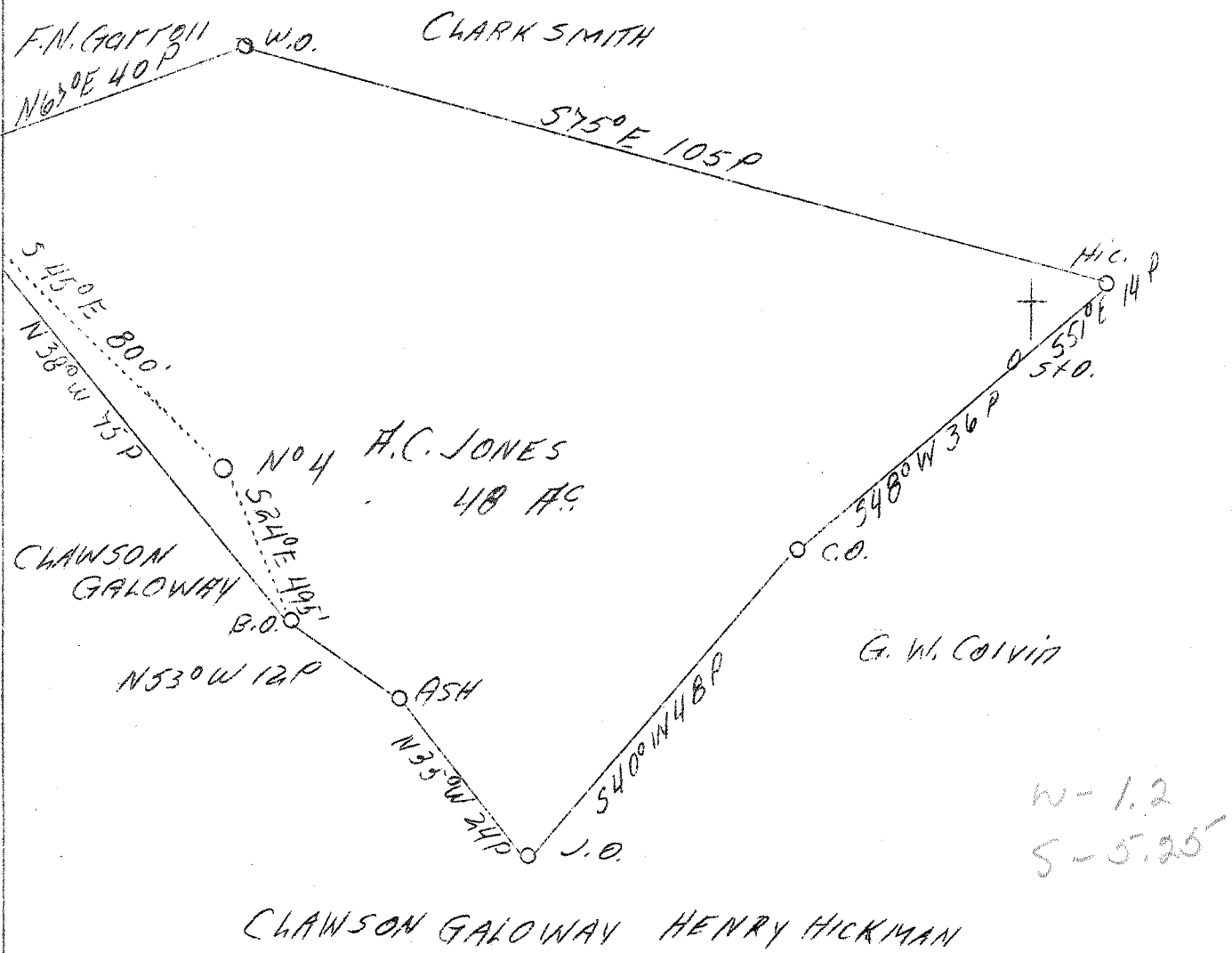
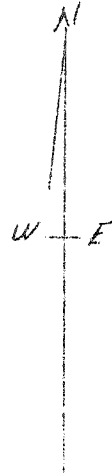


LATITUDE 39° 30'

LONGITUDE 81° 00'



H.O.P.

Company	Casto Oil Co.
Address	Charleston, W.Va.
Farm	A.C. Jones
Tract	3
Acres	48
Well (Farm) No.	4
El. (S.L.)	1020
Quadrangle	St. Marys
County	Pleasants
District	Union
Eng.	J.V. Dunbar
Eng. Reg. No.	65
File No.	C 23 L
Date	4/22/39
Scale	1" - 20 Rods

STATE OF WEST VIRGINIA
 Department of Mines
 OIL AND GAS DIVISION
 Charleston

WELL LOCATION MAP

File No. Pleas-148

x Denotes location of well on U.S. Topographic Maps, scale 1 to 62,500, latitude and longitude lines being represented by border lines as shown.

- Denotes one inch spaces of border line of original tracing.