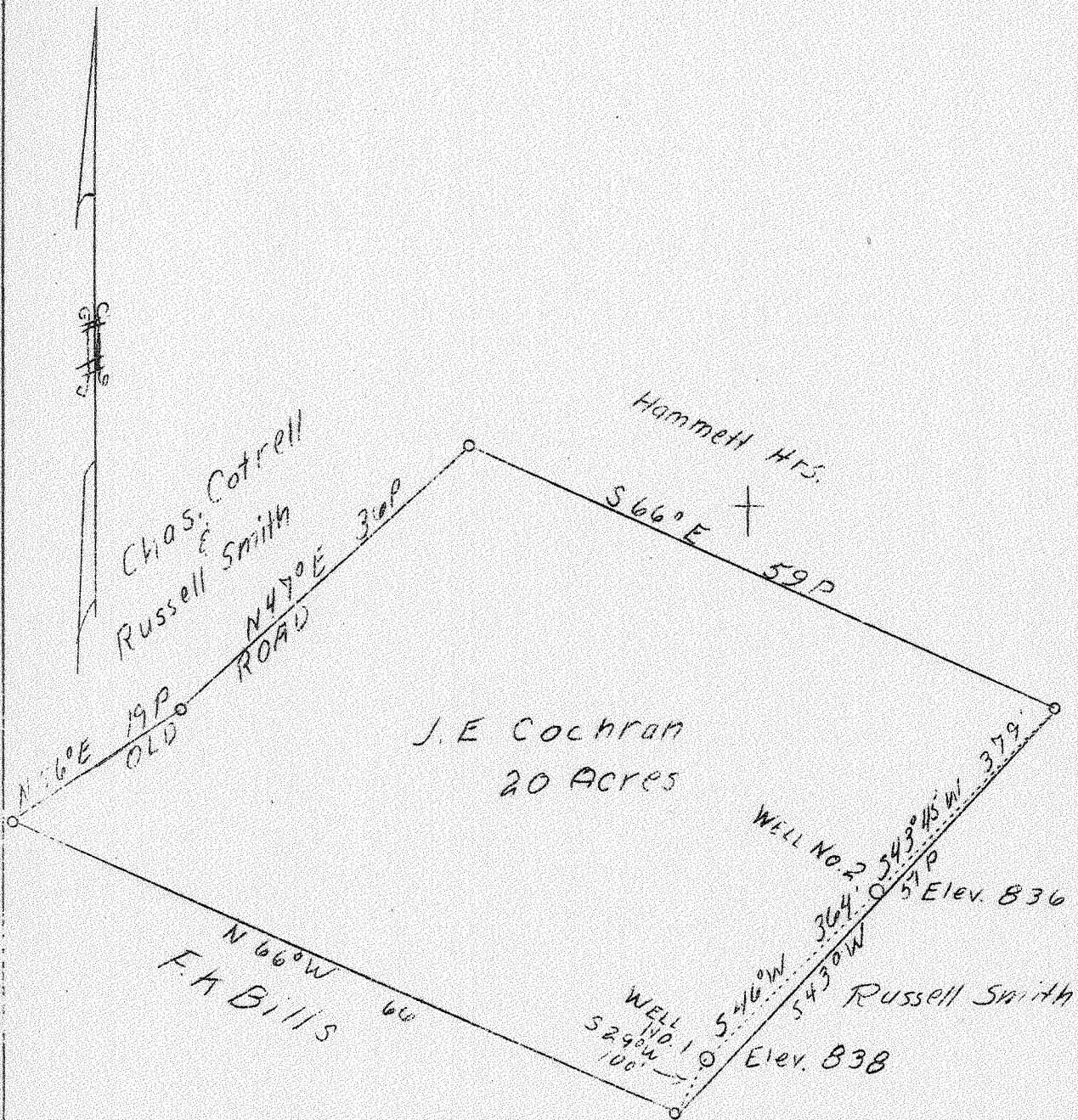


LATITUDE 39° 25'

LONGITUDE 81° 15'



J. E. Cochran
20 ACRES

WELL NO. 2 S 43° 15' W 37 P
36 P Elev. 836

WELL NO. 1 S 43° W 100
52 P Elev. 838

2.6 W
4.17 P

13D.

JUL 31 1939

Company	Sheets Oil Company
Address	Marietta, Ohio
Farm	J. E. Cochran
Tract	1
Acres	20
Well (Farm) No.	1 and 2
Elevation (SL)	#1 838 - #2 836
Quadrangle	Marietta O. - W. Va.
County	Pleasants
District	Grant
Engineer	Parker E. Peters
Eng. Reg. No.	485
Date	July 14, 1939
Scale	1" - 15 poles

STATE OF WEST VIRGINIA
Department of Mines
OIL & GAS DIVISION
Charleston

WELL LOCATION MAP

File No. PLRAS-144E-145-A

x Denotes location of well on U. S. Topographic Maps, scale 1 to 62,500, latitude and longitude lines being represented by border lines as shown.

- Denotes one inch spaces on border line of original tracing.

WEST VIRGINIA DEPARTMENT OF MINES
OIL AND GAS DIVISION

75

WELL RECORD

Permit No. *144-A*
Marietta EC

Oil or Gas Well.....
(Kind)

Company *E. J. Shuts*
 Address *Marietta, Ohio.*
 Farm *J. B. Cochran* Acres.....
 Location (waters).....
 Well No. *1* Elev. *838*
 District *Grant* County *Pleasant*
 The surface of tract is owned in fee by *Russell Smith*
 Address *St. Marys, T.O. 4*
 Mineral rights are owned by.....
 Address.....
 Drilling commenced.....
 Drilling completed.....
 Date shot..... Depth of shot.....
 Open Flow /10ths Water in..... Inch
 /10ths Merc. in..... Inch
 Volume..... Cu. Ft.
 Rock Pressure..... lbs..... hrs.
 Oil..... bbls., 1st 24 hrs.
 Fresh water..... feet..... feet
 Salt water..... feet..... feet

Casing and Tubing	Used in Drilling	Left in Well	Packers
Size			
16			Kind of Packer.....
13			
10			Size of.....
8 1/4			
6 5/8	<i>250'</i>		Depth set.....
5 3/16	<i>4 3/8" 984'</i>		
3			Perf. top.....
2			Perf. bottom.....
Liners Used.....			Perf. top.....
			Perf. bottom.....

CASING CEMENTED..... SIZE..... No. FT..... Date.....
 COAL WAS ENCOUNTERED AT..... FEET..... INCHES
 FEET..... INCHES..... FEET..... INCHES
 FEET..... INCHES..... FEET..... INCHES

Formation	Color	Hard or Soft	Top	Bottom	Oil Gas or Water	Depth Found	Remarks
<i>Produces from Berea sand</i>			<i>1364 1/2'</i>	<i>1373'</i>			<i>No record of upper formation available.</i>

