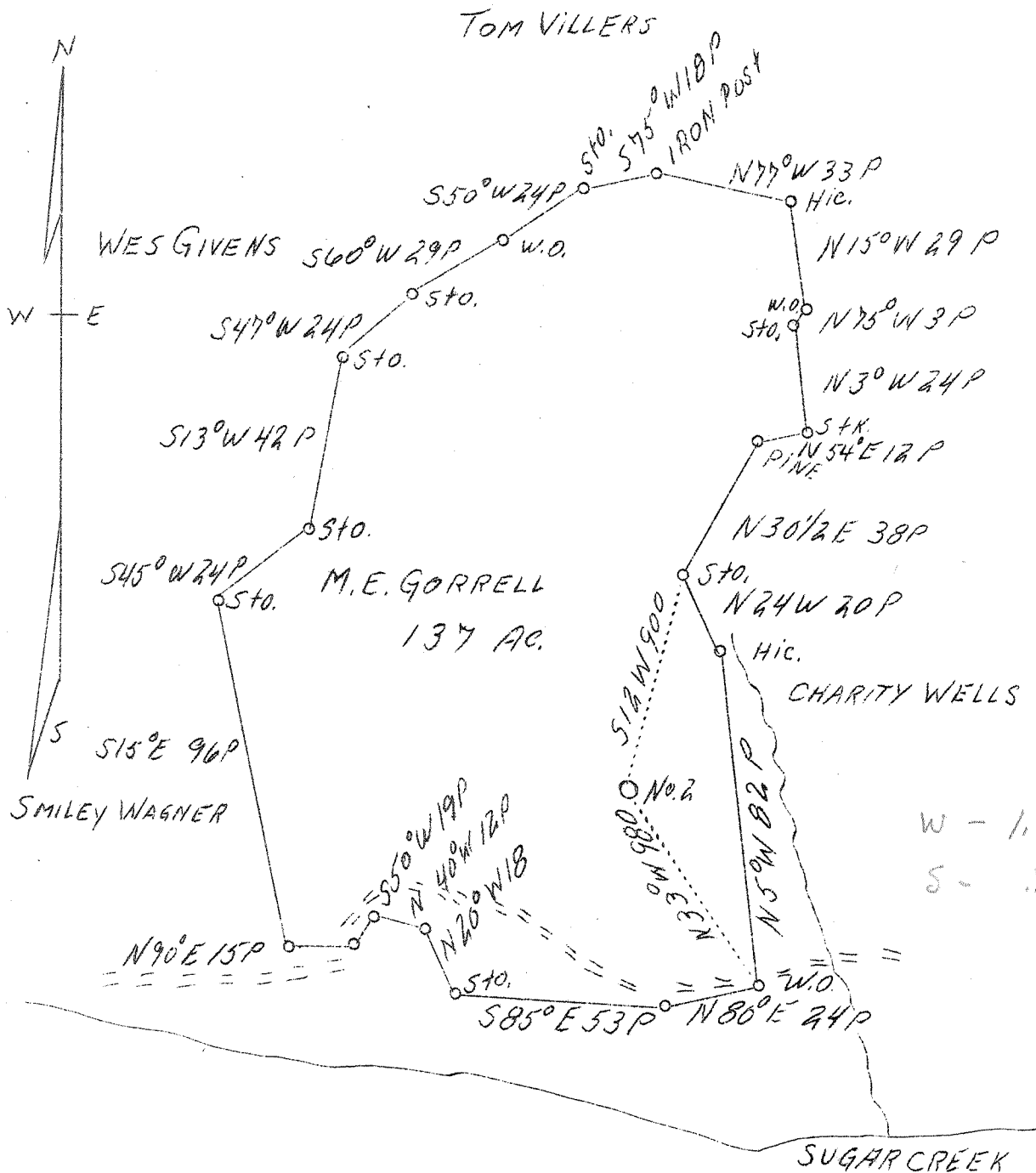


LATITUDE 39° 25'

LONGITUDE 81° 00'



Company	Casto Oil Company
Address	Charleston, W. Va.
Farm	M. E. Gorrell
Acres	137
Well (Farm) No.	2
Elevation (SL)	818
Quadrangle	St. Marys E
County	Pleasants
District	Union
Engineer	J. F. Dunbar
Eng. Reg. No.	65
File No.	C-23-L
Date	April 21, 1938
Scale	40 rods to 1 inch

STATE OF WEST VIRGINIA  
 Department of Mines  
 OIL & GAS DIVISION  
 Charleston

WELL LOCATION MAP

File No. Pleas-141-A

x Denotes location of well on U. S. Topographic Maps, scale 1 to 62,500, latitude and longitude lines being represented by border lines as shown.  
 - Denotes one inch spaces on border line of original tracing.