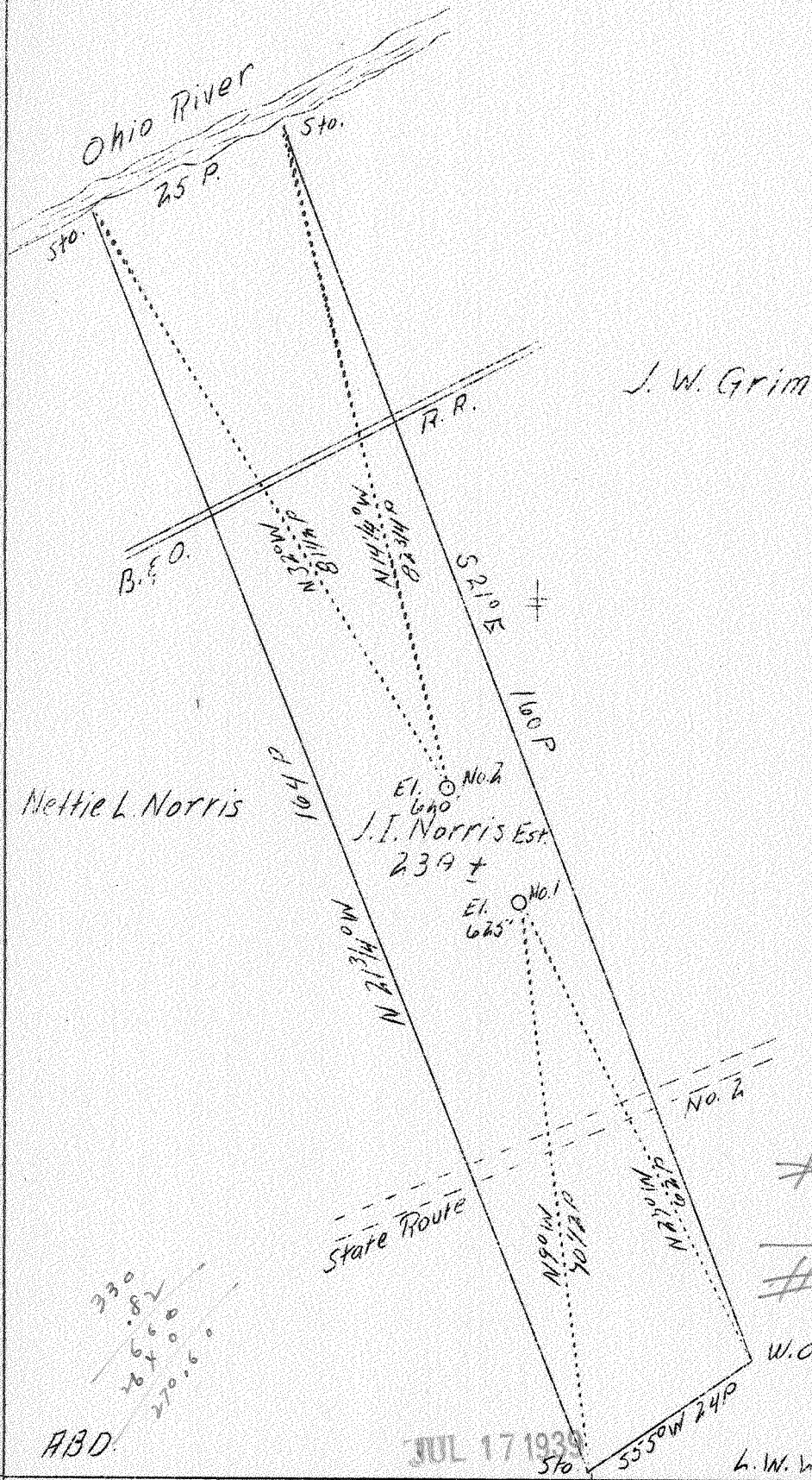


LATITUDE 39° 25'

LONGITUDE 81° 05'



N	W	E	#1	3.9 W
				4.63 W
S	W	E	#2	3.89 W
				54.6 W

330  
264.82  
270.6

ABD.

JUL 17 1939

Company	E. V. Sheets
Address	1112 - 3rd St., Marietta, O.
Farm	J. I. Norris Est.
Acres	23 plus
Well (Farm) No.	1 and 2
Elevation (SL)	No. 1-625 No. 2-620
Quadrangle	Marietta
County	Pleasants
District	Grant
Engineer	Jno. Triplett
Eng. Reg. No.	-
Date	Sept. 28, 1938
Scale	20 po. - 1"

STATE OF WEST VIRGINIA  
Department of Mines  
OIL & GAS DIVISION  
Charleston

WELL LOCATION MAP  
File No. Pleas-138-139-A

x Denotes location of well on U. S. Topographic Maps, scale 1 to 62,500, latitude and longitude lines being represented by border lines as shown.

- Denotes one inch spaces on border line of original tracing.

EO

WEST VIRGINIA DEPARTMENT OF MINES  
OIL AND GAS DIVISION

77

WELL RECORD

Hand  
139-A  
Merritt EK

Permit No. \_\_\_\_\_ Oil or Gas Well \_\_\_\_\_  
(Kind)

Company B.V. Sheets  
 Address Marietta Ohio  
 Farm J.I. Norris Estate Acres \_\_\_\_\_  
 Location (waters) \_\_\_\_\_  
 Well No. 2 Elev. \_\_\_\_\_  
 District Grant County Meigs  
 The surface of tract is owned in fee by J.I. Norris Est.  
 g/o Mrs J.I. Norris Address Huntington, W. Va.  
 Mineral rights are owned by \_\_\_\_\_  
 Address \_\_\_\_\_  
 Drilling commenced \_\_\_\_\_  
 Drilling completed \_\_\_\_\_  
 Date shot \_\_\_\_\_ Depth of shot \_\_\_\_\_  
 Open Flow /10ths Water in \_\_\_\_\_ Inch  
 /10ths Merc. in \_\_\_\_\_ Inch  
 Volume \_\_\_\_\_ Cu. Ft.  
 Rock Pressure \_\_\_\_\_ lbs. \_\_\_\_\_ hrs.  
 Oil \_\_\_\_\_ bbls., 1st 24 hrs.  
 Fresh water \_\_\_\_\_ feet \_\_\_\_\_ feet  
 Salt water \_\_\_\_\_ feet \_\_\_\_\_ feet

Casing and Tubing	Used in Drilling	Left in Well	Packers
Size			
16			Kind of Packer
13			
10			Size of
8 1/4	61	61	
6 5/8	162	7	Depth set
5 3/16	422	422	
3			Perf. top
2			Perf. bottom
Liners Used			Perf. top
			Perf. bottom

CASING CEMENTED \_\_\_\_\_ SIZE \_\_\_\_\_ No. FT. \_\_\_\_\_ Date \_\_\_\_\_  
 COAL WAS ENCOUNTERED AT \_\_\_\_\_ FEET \_\_\_\_\_ INCHES  
 \_\_\_\_\_ FEET \_\_\_\_\_ INCHES  
 \_\_\_\_\_ FEET \_\_\_\_\_ INCHES

Formation	Color	Hard or Soft	Top	Bottom	Oil Gas or Water	Depth Found	Remarks
produced from Cow Run Formation			492	500	492 oil, shaly and		poor
No record of upper formations.							

