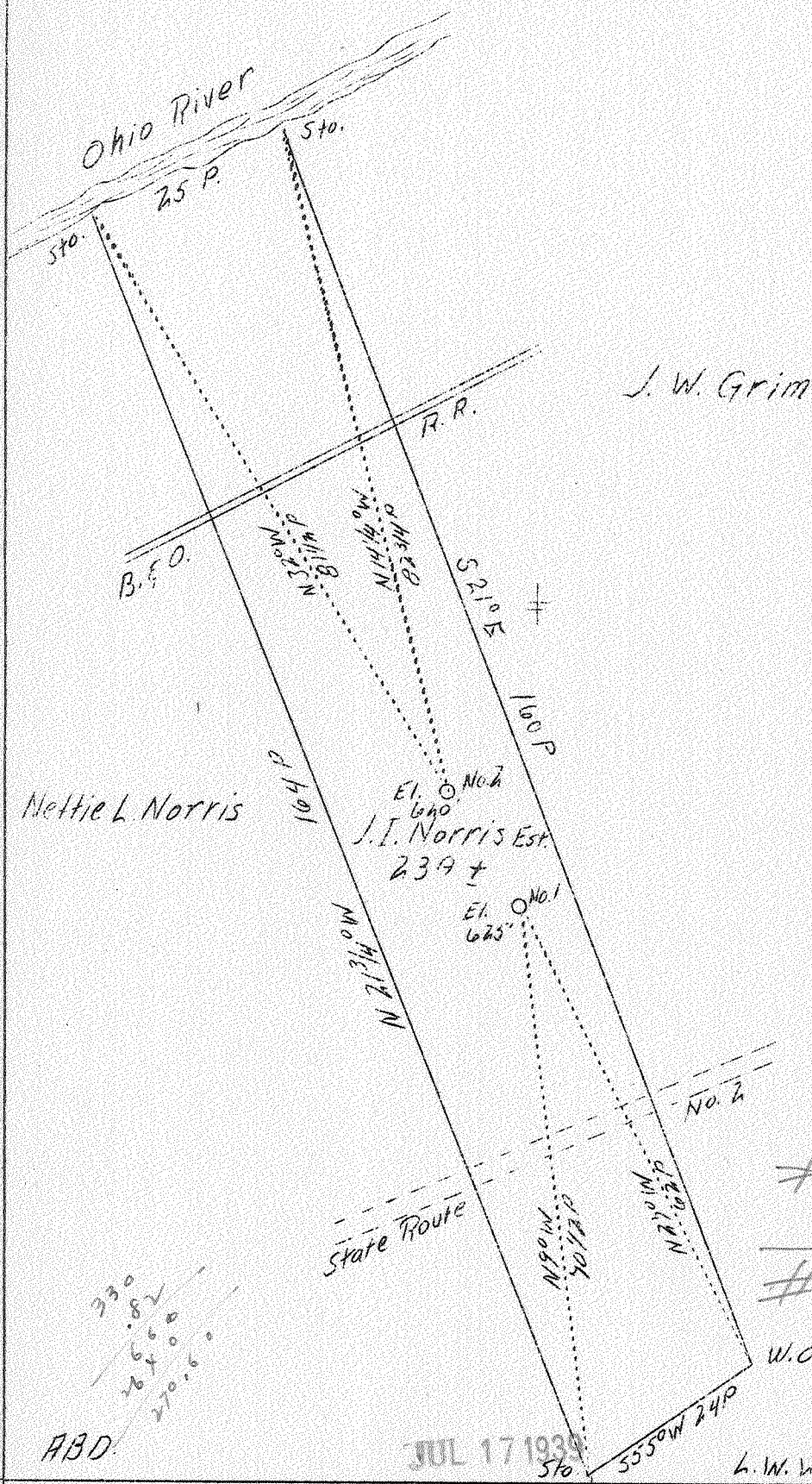


LATITUDE 39° 25'

LONGITUDE 81° 05'



Company	E. V. Sheets
Address	1112 - 3rd St., Marietta, O.
Farm	J. I. Norris Est.
Acres	23 plus
Well (Farm) No.	1 and 2
Elevation (SL)	No. 1-625 No. 2-620
Quadrangle	Marietta
County	Pleasants
District	Grant
Engineer	Jno. Triplett
Eng. Reg. No.	-
Date	Sept. 28, 1938
Scale	20 po. - 1"

STATE OF WEST VIRGINIA  
Department of Mines  
OIL & GAS DIVISION  
Charleston

WELL LOCATION MAP

File No. Pleas-138-139-A

x Denotes location of well on U. S. Topographic Maps, scale 1 to 62,500, latitude and longitude lines being represented by border lines as shown.

- Denotes one inch spaces on border line of original tracing.

WEST VIRGINIA DEPARTMENT OF MINES  
OIL AND GAS DIVISION

76

WELL RECORD

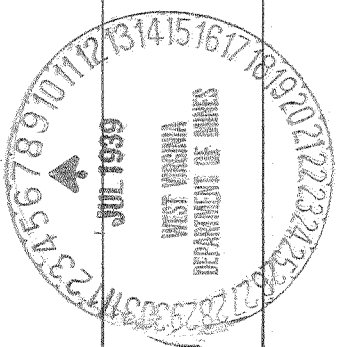
Permit No. 138-A Marietta EC Oil or Gas Well (Kind) \_\_\_\_\_

Company H.V. Sheets  
 Address Marietta, O.  
 Farm J.I. Morris Estate Acres 26  
 Location (waters) Ohio River  
 Well No. 1 Elev. \_\_\_\_\_  
 District Grant Dist. County Pleasants  
 The surface of tract is owned in fee by J.I. Morris Estate  
 a/o Mrs. J.I. Morris Address Huntington, W. Va.  
 Mineral rights are owned by same  
 Address \_\_\_\_\_  
 Drilling commenced \_\_\_\_\_  
 Drilling completed 1930  
 Date shot \_\_\_\_\_ Depth of shot \_\_\_\_\_  
 Open Flow /10ths Water in \_\_\_\_\_ Inch  
/10ths Merc. in \_\_\_\_\_ Inch  
 Volume \_\_\_\_\_ Cu. Ft.  
 Rock Pressure \_\_\_\_\_ lbs. \_\_\_\_\_ hrs.  
 Oil \_\_\_\_\_ bbls., 1st 24 hrs.  
 Fresh water shut off by 60' of casing. feet  
 Salt water none feet \_\_\_\_\_ feet

Casing and Tubing	Used in Drilling	Left in Well	Packers
Size			
16			Kind of Packer
13			
10			Size of
8 1/4	65	65	
6 5/8	177	?	Depth set
5 3/16	490	490	
3			Perf. top
2		495	Perf. bottom
Liners Used			Perf. top
			Perf. bottom

CASING CEMENTED \_\_\_\_\_ SIZE \_\_\_\_\_ No. FT. \_\_\_\_\_ Date \_\_\_\_\_  
 COAL WAS ENCOUNTERED AT none FEET \_\_\_\_\_ INCHES  
 \_\_\_\_\_ FEET \_\_\_\_\_ INCHES FEET \_\_\_\_\_ INCHES  
 \_\_\_\_\_ FEET \_\_\_\_\_ INCHES FEET \_\_\_\_\_ INCHES

Formation	Color	Hard or Soft	Top	Bottom	Oil Gas or Water	Depth Found	Remarks
Produced from Cow Run formation			500	512	508 oil		



AUG 24 1939

