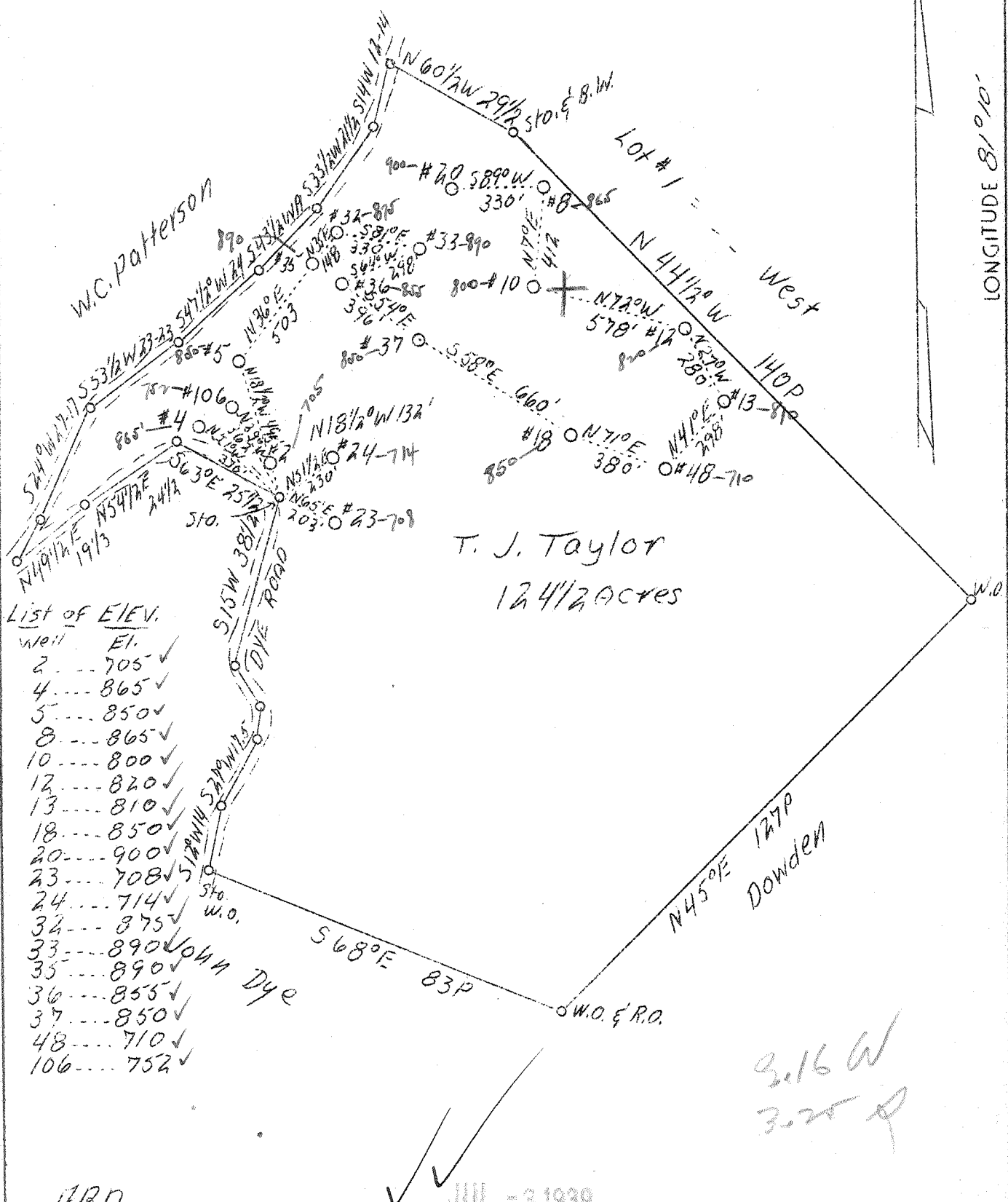


LATITUDE 39° 25'

LONGITUDE 81° 0'



List of Elev.

Well	Elev.	✓
2	705	✓
4	865	✓
5	850	✓
8	865	✓
10	800	✓
12	820	✓
13	810	✓
18	850	✓
20	900	✓
23	708	✓
24	714	✓
32	875	✓
33	890	✓
35	890	✓
36	855	✓
37	850	✓
48	710	✓
106	752	✓

T. J. Taylor
124 1/2 ACRES

N 45° E 127 P
Dowden

ABD.

JUL - 3 1939

2.16 W
3.25 P

Company	Patterson Oil Co.
Address	Jamestown, N.Y.
Farm	T.J. Taylor
Acres	124 1/2
Serial No.	106
Well(Farm)No.	See List Above
El.(S.L.)	See List Above
Quadrangle	St. Mary's
County	Pleasants
District	Washington
Eng.	Parker E. Peters
Eng. Reg. No.	485
Date	3/15/39
Scale	1" = 30 Feet

(WC)

132A 133A

class No. 2 & No. 4

STATE OF WEST VIRGINIA
Department of Mines
OIL AND GAS DIVISION
Charleston

WELL LOCATION MAP
132A & 133A
File No. Pleasants-134-135-A
Well # 5-106

x Denotes location of well on U.S. Topographic Maps, scale 1 to 62,500, latitude and longitude lines being represented by border lines as shown.

- Denotes one inch spaces on border line of original tracing.

no. 2, 3, 4 - 100-A - at Pitt