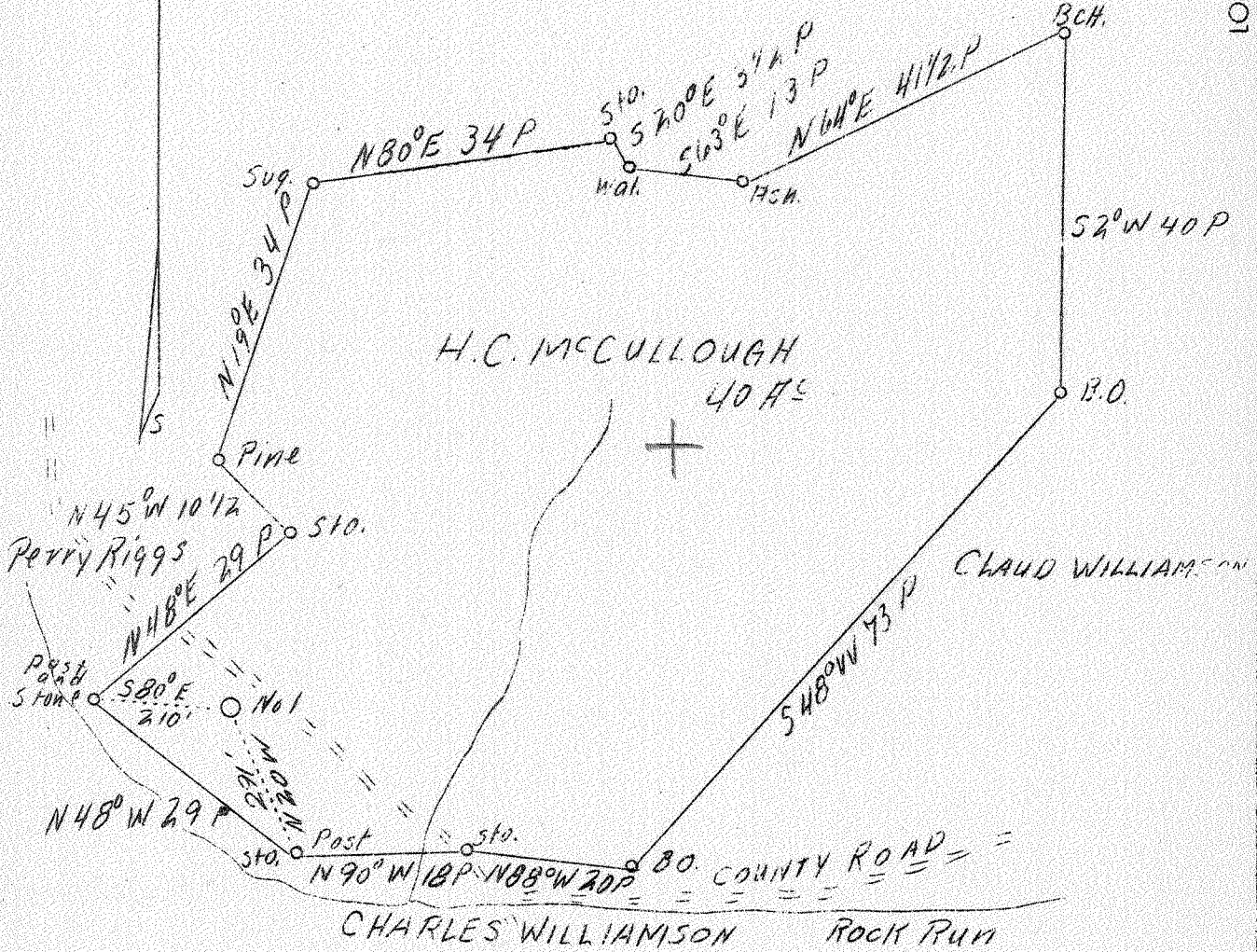


LATITUDE 39° 25'

LONGITUDE 81° 00'



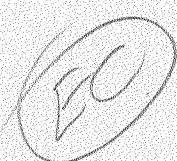
G. W. LAMP HRS.



APR 24 1939

SURVEYED AND PLATTED BY ROBERT CHALFANT PIKE, W. VA.

Company Riggs Farm Oil Co.  
 Address St. Mary's, W. Va.  
 Farm H. C. McCullough  
 Acres 40  
 Well (Farm) No. 1  
 El (S. L.) 806  
 Quadrangle St. Mary's E  
 County Pleasants  
 District Lafayette  
 Eng. J. V. Dunbar  
 File No. C - 23 L  
 Date 2/17/39  
 Scale 1" = 20 Rds.



STATE OF WEST VIRGINIA  
 Department of Mines  
 OIL AND GAS DIVISION  
 Charleston

WELL LOCATION MAP

File No. Pleas-128-A

x Denotes location of well on U.S. Topographic Maps, scale 1 to 62,500, latitude and longitude lines being represented by border lines as shown.

- Denotes one inch spaces on border line of original tracing.

STATE OF WEST VIRGINIA  
DEPARTMENT OF MINES  
OIL AND GAS DIVISION

WELL RECORD

72

Ab  
Permit No. 1781A

Oil or Gas Well No. 1.  
(Kind)

Company Riggs Farm Oil Company  
Address St. Marys, West Virginia.  
Farm H.C. McCullough Acres 40  
Location (waters) Rock Run,  
Well No. One Elev. 806  
District Lafayette County Pleasants  
The surface of tract is owned in fee by H.C. McCullough,  
Address Mole Hill, W. Va.  
Mineral rights are owned by H.C. McCullough, et al.  
Address Mole Hill, W. Va.  
Drilling commenced About 20 years ago  
Drilling completed Same year.  
Date shot \_\_\_\_\_ Depth of shot \_\_\_\_\_  
Open Flow /10ths Water in \_\_\_\_\_ Inch  
/10ths Merc. in \_\_\_\_\_ Inch  
Volume \_\_\_\_\_ Cu. Ft.  
Rock Pressure \_\_\_\_\_ lbs. \_\_\_\_\_ hrs.  
Oil 2 or three bbl \_\_\_\_\_ bbls., 1st 24 hrs.  
Fresh water \_\_\_\_\_ feet \_\_\_\_\_ feet  
Salt water \_\_\_\_\_ feet \_\_\_\_\_ feet

Casing and Tubing	Used in Drilling	Left in Well	Packers
Size			Kind of Packer
16			
13			<u>Disk</u>
10			Size of
8 1/4	<u>200</u>		
6 5/8	<u>900</u>		Depth set
5 3/16	<u>1330</u>		
3			Perf. top
2			Perf. bottom
Liners Used			Perf. top
			Perf. bottom

CASING CEMENTED \_\_\_\_\_ SIZE \_\_\_\_\_ No. FT. \_\_\_\_\_ Date \_\_\_\_\_  
COAL WAS ENCOUNTERED AT \_\_\_\_\_ FEET \_\_\_\_\_ INCHES  
\_\_\_\_\_ FEET \_\_\_\_\_ INCHES \_\_\_\_\_ FEET \_\_\_\_\_ INCHES  
\_\_\_\_\_ FEET \_\_\_\_\_ INCHES \_\_\_\_\_ FEET \_\_\_\_\_ INCHES

Formation	Color	Hard or Soft	Top	Bottom	Oil Gas or Water	Depth Found	Remarks
Salt Sand			1300	1620			
Maxon			1645	1665			
Big Lime			1675	1732			
Injun			1732	1763			
Oil Pay			1733	1735	Oil	1733 to 1735	
Total Depth							1763
4-7/8 Casing		set on packer					1330ft.

